

## 2018 MYSTERY CROCHET ALONG



### MATERIALS

**Caron® One Pound™** (16 oz/454 g; 812 yds/742 m)

**Note:** Quantities below are for complete Blanket.

#### Version 1

**Contrast A** Off White (10514)

**2 balls**

**Contrast B** Pale Green (10587)

**1 ball**

**Contrast C** Light Terracotta (15010)

**1 ball**

#### Version 2

**Contrast A** Off White (10514)

**2 balls**

**Contrast B** Soft Grey Mix (10616)

**1 ball**

**Contrast C** Hollyhock (15018)

**1 ball**

#### Version 3

**Contrast A** Sunflower (10549)

**2 balls**

**Contrast B** Dark Pink (10621)

**1 ball**

**Contrast C** Grass Green (10620)

**1 ball**

Size U.S. H/8 (5 mm) crochet hook **or size needed to obtain gauge.**

### CLUE #1 ABBREVIATIONS

**Approx** = Approximately

**Beg** = Begin(ning)

**Ch** = Chain(s)

**Dc** = Double crochet

**Rep** = Repeat

**Rnd(s)** = Round(s)

**Sl st** = Slip stitch

**Sp(s)** = Space(s)

### MEASUREMENT

Finished Blanket approx 57"  
[144.5 cm] square.



### CLUE #1

### INSTRUCTIONS

**Note:** Ch 3 at beg of rnd counts as dc.

With A, ch 4. See diagram on page 4.

**1st rnd:** [2 dc. (Ch 2. 3 dc) 3 times. Ch 2] all in 4th ch from hook. Join with sl st to top of ch 3.

**2nd rnd:** Sl st in each of next 2 dc and next ch-2 sp. Ch 3. (1 dc. Ch 2. 2 dc) in same ch-2 sp. 1 dc in each of next 3 dc. \*(2 dc. Ch 2. 2 dc) all in next ch-2 sp. 1 dc in each of next 3 dc. Rep from \* twice more. Join with sl st to top of ch 3.

### GAUGE

12 dc and 6 rows = 4" [10 cm].

**3rd rnd:** Sl st in next dc and next ch-2 sp. Ch 3. (1 dc. Ch 2. 2 dc) in same ch-2 sp. \*1 dc in each of next 3 dc. Ch 1. Skip next dc. 1 dc in each dc to next corner ch-2 sp. (2 dc. Ch 2. 2 dc) all in next ch-2 sp. Rep from \* twice more. 1 dc in each of next 3 dc. Ch 1. Skip next dc. 1 dc in each dc to end of rnd. Join with sl st to top of ch 3.

**4th rnd:** Sl st in next dc and next ch-2 sp. Ch 3. (1 dc. Ch 2. 2 dc) in same ch-2 sp. \*1 dc in each of next 4 dc. Ch 1. Skip next dc. 1 dc in next ch-1 sp. Ch 1. Skip next dc. 1 dc in each dc to next corner ch-2 sp. (2 dc. Ch 2. 2 dc) all in next ch-2 sp. Rep from \* twice more. 1 dc in each of next 4 dc. Ch 1. Skip next

## 2018 MYSTERY CROCHET ALONG

dc. 1 dc in next ch-1 sp. Ch 1. Skip next dc. 1 dc in each dc to end of rnd. Join with sl st to top of ch 3.

**5th rnd:** Sl st in next dc and next ch-2 sp. Ch 3. (1 dc. Ch 2. 2 dc) in same ch-2 sp. \*1 dc in each of next 5 dc. Ch 1. Skip next dc. 1 dc in each of next 3 sts. Ch 1. Skip next dc. 1 dc in each dc to next corner ch-2 sp. (2 dc. Ch 2. 2 dc) all in next ch-2 sp. Rep from \* twice more. 1 dc in each of next 5 dc. Ch 1. Skip next dc. 1 dc in each of next 3 sts. Ch 1. Skip next dc. 1 dc in each dc to end of rnd. Join with sl st to top of ch 3.

**6th rnd:** Sl st in next dc and next ch-2 sp. Ch 3. (1 dc. Ch 2. 2 dc) in same ch-2 sp. \*1 dc in each of next 6 dc. Ch 1. Skip next dc. 1 dc in each of next 5 sts. Ch 1. Skip next dc. 1 dc in each dc to next corner ch-2 sp. (2 dc. Ch 2. 2 dc) all in next ch-2 sp. Rep from \* twice more. 1 dc in each of next 6 dc. Ch 1. Skip next dc. 1 dc in each of next 5 sts. Ch 1. Skip next dc. 1 dc in each dc to end of rnd. Join with sl st to top of ch 3.

**7th rnd:** Sl st in next dc and next ch-2 sp. Ch 3. (1 dc. Ch 2. 2 dc) in same ch-2 sp. \*(1 dc in each of next 7 dc. Ch 1. Skip next dc) twice. 1 dc in each dc to next corner ch-2 sp. (2 dc. Ch 2. 2 dc) all in next ch-2 sp. Rep from \* twice more. (1 dc in each of next 7 dc. Ch 1. Skip next dc) twice. 1 dc in each of next 7 sts. Ch 1. Skip next dc. 1 dc in each dc to end of rnd. Join with sl st to top of ch 3.

**8th rnd:** Sl st in next dc and next ch-2 sp. Ch 3. (1 dc. Ch 2. 2 dc) in same ch-2 sp. \*1 dc in each of next 8 dc. Ch 1. Skip next dc. 1 dc in each of next 9 sts. Ch 1. Skip next dc. 1 dc in each dc to next corner ch-2 sp. (2 dc. Ch 2. 2 dc) all in next ch-2 sp. Rep from \* twice more. 1 dc in each of next 8 dc. Ch 1. Skip next dc. 1 dc in each of next 9 sts. Ch 1. Skip next dc. 1 dc in each dc to end of rnd. Join with sl st to top of ch 3.

**9th rnd:** Sl st in next dc and next ch-2 sp. Ch 3. (1 dc. Ch 2. 2 dc) in same ch-2 sp. \*1 dc in each of next 9 dc. Ch 1. Skip next dc. 1 dc in next ch-1 sp. Ch 1. Skip next dc.

1 dc in each of next 7 sts. Ch 1. Skip next dc. 1 dc in next ch-1 sp. Ch 1. Skip next dc. 1 dc in each dc to next corner ch-2 sp. (2 dc. Ch 2. 2 dc) all in next ch-2 sp. Rep from \* twice more. 1 dc in each of next 9 dc. Ch 1. Skip next dc. 1 dc in next ch-1 sp. Ch 1. Skip next dc. 1 dc in each of next 7 sts. Ch 1. Skip next dc. 1 dc in next ch-1 sp. Ch 1. Skip next dc. 1 dc in each dc to end of rnd. Join with sl st to top of ch 3.

**10th rnd:** Sl st in next dc and next ch-2 sp. Ch 3. (1 dc. Ch 2. 2 dc) in same ch-2 sp. \*1 dc in each of next 10 dc. Ch 1. Skip next dc. 1 dc in each of next 3 sts. Ch 1. Skip next dc. 1 dc in each of next 5 sts. Ch 1. Skip next dc. 1 dc in each of next 3 sts. Ch 1. Skip next dc. 1 dc in each dc to next corner ch-2 sp. (2 dc. Ch 2. 2 dc) all in next ch-2 sp. Rep from \* twice more. 1 dc in each of next 10 dc. Ch 1. Skip next dc. 1 dc in each of next 3 sts. Ch 1. Skip next dc. 1 dc in each of next 5 sts. Ch 1. Skip next dc. 1 dc in each of next 3 sts. Ch 1. Skip next dc. 1 dc in each dc

to end of rnd. Join with sl st to top of ch 3.

**11th rnd:** Sl st in next dc and next ch-2 sp. Ch 3. (1 dc. Ch 2. 2 dc) in same ch-2 sp. \*1 dc in each of next 11 dc. Ch 1. Skip next dc. 1 dc in each of next 5 sts. Ch 1. Skip next dc. 1 dc in each of next 3 sts. Ch 1. Skip next dc. 1 dc in each of next 5 sts. Ch 1. Skip next dc. 1 dc in each dc to next corner ch-2 sp. (2 dc. Ch 2. 2 dc) all in next ch-2 sp. Rep from \* twice more. 1 dc in each of next 11 dc. Ch 1. Skip next dc. 1 dc in each of next 5 sts. Ch 1. Skip next dc. 1 dc in each of next 3 sts. Ch 1. Skip next dc. 1 dc in each of next 5 sts. Ch 1. Skip next dc. 1 dc in each dc to end of rnd. Join with sl st to top of ch 3.

**12th rnd:** Sl st in next dc and next ch-2 sp. Ch 3. (1 dc. Ch 2. 2 dc) in same ch-2 sp. \*1 dc in each of next 12 dc. Ch 1. Skip next dc. 1 dc in each of next 7 sts. Ch 1. Skip next dc. 1 dc in next dc. Ch 1. Skip next dc. 1 dc in each of next 7 sts. Ch 1. Skip next dc. 1 dc in each dc to next corner

## 2018 MYSTERY CROCHET ALONG

ch-2 sp. (2 dc. Ch 2. 2 dc) all in next ch-2 sp. Rep from \* twice more. 1 dc in each of next 12 dc. Ch 1. Skip next dc. 1 dc in each of next 7 sts. Ch 1. Skip next dc. 1 dc in next st. Ch 1. Skip next dc. 1 dc in each of next 7 sts. Ch 1. Skip next dc. 1 dc in each dc to end of rnd. Join with sl st to top of ch 3.

**13th rnd:** Sl st in next dc and next ch-2 sp. Ch 3. (1 dc. Ch 2. 2 dc) in same ch-2 sp. \*1 dc in each of next 13 dc. (Ch 1. Skip next dc. 1 dc in each of next 9 sts) twice. Ch 1. Skip next dc. 1 dc in each dc to next corner ch-2 sp. (2 dc. Ch 2. 2 dc) all in next ch-2 sp. Rep from \* twice more. 1 dc in each of next 13 dc. (Ch 1. Skip next dc. 1 dc in each of next 9 sts) twice. Ch 1. 1 dc in each dc to end of rnd. Join with sl st to top of ch 3.

**14th rnd:** Sl st in next dc and next ch-2 sp. Ch 3. (1 dc. Ch 2. 2 dc) in same ch-2 sp. \*1 dc in each of next 14 dc. (Ch 1. Skip next dc. 1 dc in next ch-1 sp. Ch 1. Skip next dc. 1 dc in each of next 7 sts) twice. Ch 1. Skip next dc. 1 dc in next ch-1 sp. Ch 1. Skip next dc. 1 dc

in each dc to next corner ch-2 sp. (2 dc. Ch 2. 2 dc) all in next ch-2 sp. Rep from \* twice more. 1 dc in each of next 14 dc. (Ch 1. Skip next dc. 1 dc in next ch-1 sp. Ch 1. Skip next dc. 1 dc in each of next 7 sts) twice. Ch 1. Skip next dc. 1 dc in next ch-1 sp. Ch 1. Skip next dc. 1 dc in each dc to end of rnd. Join with sl st to top of ch 3.

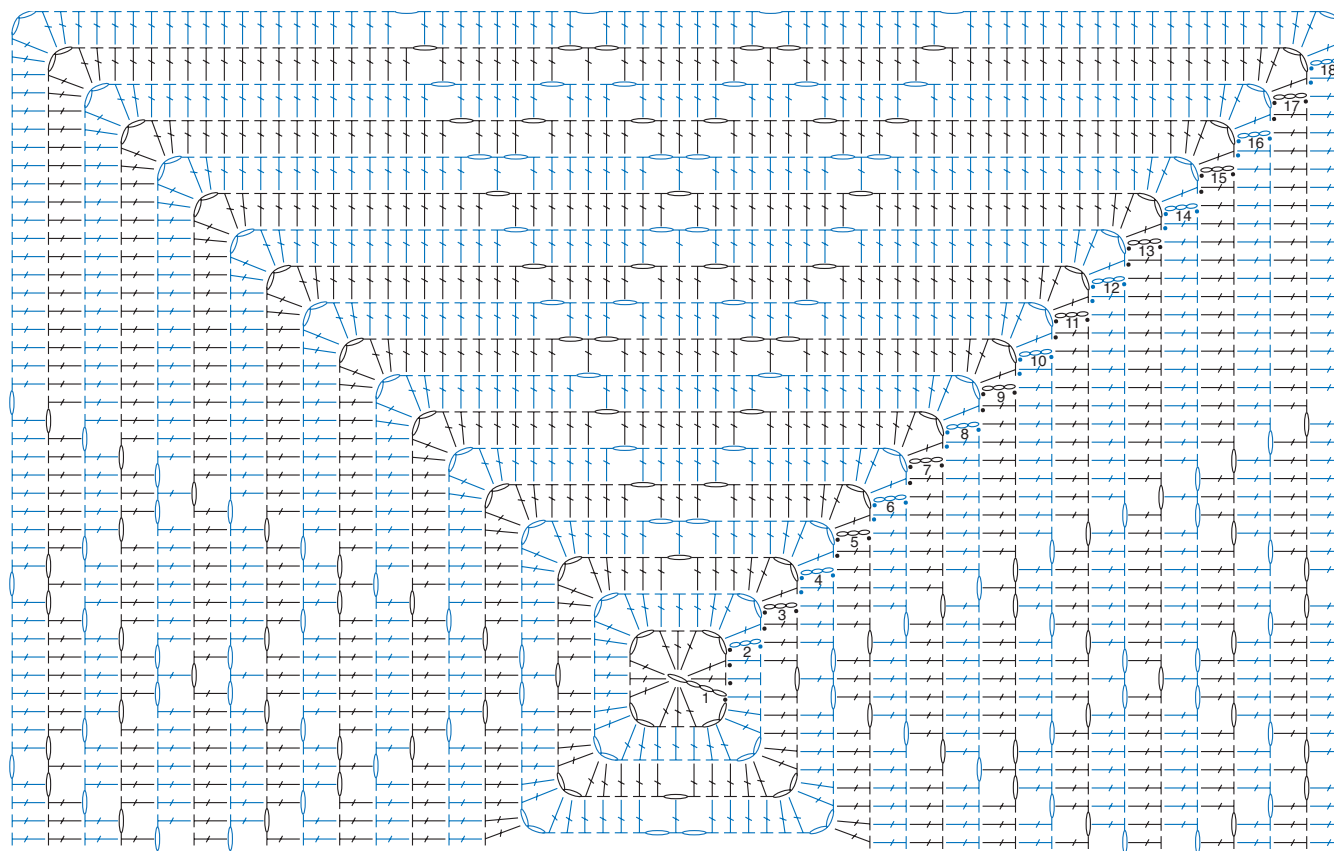
**15th rnd:** Sl st in next dc and next ch-2 sp. Ch 3. (1 dc. Ch 2. 2 dc) in same ch-2 sp. \*1 dc in each of next 15 dc. (Ch 1. Skip next dc. 1 dc in each of next 3 sts. Ch 1. Skip next dc. 1 dc in each of next 5 sts) twice. Ch 1. Skip next dc. 1 dc in each of next 3 sts. Ch 1. Skip next dc. 1 dc in each dc to next corner ch-2 sp. (2 dc. Ch 2. 2 dc) all in next ch-2 sp. Rep from \* twice more. 1 dc in each of next 15 dc. (Ch 1. Skip next dc. 1 dc in each of next 3 sts. Ch 1. Skip next dc. 1 dc in each of next 5 sts) twice. Ch 1. Skip next dc. 1 dc in each of next 3 sts. Ch 1. Skip next dc. 1 dc in each dc to end of rnd. Join with sl st to top of ch 3.

**16th rnd:** Sl st in next dc and next ch-2 sp. Ch 3. (1 dc. Ch 2. 2 dc) in same ch-2 sp. \*1 dc in each of next 16 dc. (Ch 1. Skip next dc. 1 dc in each of next 5 sts. Ch 1. Skip next dc. 1 dc in each of next 3 sts) twice. Ch 1. Skip next dc. 1 dc in each of next 5 sts. Ch 1. Skip next dc. 1 dc in each dc to next corner ch-2 sp. (2 dc. Ch 2. 2 dc) all in next ch-2 sp. Rep from \* twice more. 1 dc in each of next 16 dc. (Ch 1. Skip next dc. 1 dc in each of next 5 sts. Ch 1. Skip next dc. 1 dc in each of next 3 sts) twice. Ch 1. Skip next dc. 1 dc in each dc to end of rnd. Join with sl st to top of ch 3.

**17th rnd:** Sl st in next dc and next ch-2 sp. Ch 3. (1 dc. Ch 2. 2 dc) in same ch-2 sp. \*1 dc in each of next 17 dc. (Ch 1. Skip next dc. 1 dc in each of next 7 sts. Ch 1. Skip next dc. 1 dc in next dc) twice. Ch 1. Skip next dc. 1 dc in each of next 7 sts. Ch 1. Skip next dc. 1 dc in each dc to ch-2 sp. (2 dc. Ch 2. 2 dc) all in next ch-2 sp. Rep from \* twice more.

1 dc in each of next 17 dc. (Ch 1. Skip next dc. 1 dc in each of next 7 sts. Ch 1. Skip next dc. 1 dc in next dc) twice. Ch 1. Skip next dc. 1 dc in each of next 7 sts. Ch 1. Skip next dc. 1 dc in each dc to end of rnd. Rep from \* twice more. Join with sl st to top of ch 3. **18th rnd:** Sl st in next dc and next ch-2 sp. Ch 3. (1 dc. Ch 2. 2 dc) in same ch-2 sp. \*1 dc in each of next 18 dc. (Ch 1. Skip next dc. 1 dc in each of next 9 sts) 3 times. Ch 1. Skip next dc. 1 dc in each dc to next corner ch-2 sp. (2 dc. Ch 2. 2 dc) all in next ch-2 sp. Rep from \* twice more. 1 dc in each of next 18 dc. (Ch 1. Skip next dc. 1 dc in each of next 9 sts) 3 times. Ch 1. Skip next dc. 1 dc in each dc to end of rnd. Join with sl st to top of ch 3. Fasten off.

## 2018 MYSTERY CROCHET ALONG



CLUE #1

- STITCH KEY
- = chain (ch)
  - = slip stitch (sl st)
  - ┆ = double crochet (dc)