

1. Pineapple Lace Shawl

1
STEEL HOOK

1
SUPER FINE
SIZE 5

INTERMEDIATE

MEASUREMENTS

Approx 12½ x 50½" [32 x 128.5 cm].

GAUGE

2 pat reps (30 sts) and 16 rows = 5" [12.5 cm].

STITCH GLOSSARY

See page 46 for Helpful Hints.

Approx = Approximately.

Beg = Beginning.

Ch(s) = Chain(s).

Dc = Double crochet.

Hdc = Half double crochet.

Pat = Pattern.

Rem = Remaining.

Rep = Repeat.

RS = Right side.

Sc = Single crochet.

Sp(s) = Space(s).

St(s) = Stitch(es).

Tr = Treble crochet.

WS = Wrong side.



MATERIALS

Bernat® Handicrafter® Crochet Thread

Solids: (85 g/3 oz; 339 m/371 yds or 400 g/14 oz; 1596 m/1746 yds)



85 g ball: 31426 (Rosy Rose)
or 400 g ball: 32426 (Rosy Rose)

85 g/3 oz ball OR 400 g/14 oz ball

3 balls

1 ball

Size 2 mm (U.S. 4) steel crochet hook or size needed to obtain gauge.

INSTRUCTIONS

Note: Ch 3 at beg of row counts as dc throughout.

Ch 394. Place marker on every 50th ch for easier counting. (See Chart I on page 6).

1st row: (RS). 2 dc in 4th ch from hook. *Ch 7. Miss next 5 ch. 1 sc in next ch. Ch 3. Miss next 2 ch. 1 sc in next ch. Ch 7. Miss next 5 ch.** (2 dc. Ch 1. 2 dc) in next ch. – shell made. Rep from *, ending last rep at **. 3 dc in last ch. Turn.

2nd row: Ch 3. 2 dc in first dc. *Ch 3. 1 sc in next ch-7 sp. Ch 5. 1 sc in next ch-7 sp.** Ch 3. Shell in ch-1 sp of next shell. Rep from *, ending last rep at **. Ch 3. 3 dc in top of turning ch. Turn.

3rd row: Ch 3. 2 dc in first dc. *11 tr in next ch-5 sp.** Shell in ch-1 sp of next shell. Rep from *, ending last rep at **. 3 dc in top of turning ch. Turn.

4th row: Ch 3. 2 dc in first dc. *Ch 2. 1 sc in first tr. (Ch 3. Miss next tr. 1 sc in next tr) 5 times. Ch 2.** Shell in ch-1 sp of next shell. Rep from *, ending last rep at **. 3 dc in top of turning ch. Turn.

5th row: Ch 3. 2 dc in first dc. *(Ch 3. 1 sc in next ch-3 sp) 5 times. Ch 3.** Shell in ch-1 sp of next shell. Rep from *, ending last rep at **. 3 dc in top of turning ch. Turn.

6th row: Ch 3. 2 dc in first dc. *Ch 4. Miss next ch-3 sp. 1 sc in next ch-3 sp. (Ch 3. 1 sc in next ch-3 sp) 3 times. Ch 4.** Shell in ch-1 sp of next shell. Rep from *, ending last rep at **. 3 dc in top of turning ch. Turn.

7th row: Ch 3. 2 dc in first dc. *Ch 5. Miss next ch-4 sp. 1 sc in next ch-3 sp. (Ch 3. 1 sc in next ch-3 sp) twice. Ch 5.** Shell in ch-1 sp of next shell. Rep from *ending last rep at **. 3 dc in top of turning ch. Turn.

8th row: Ch 3. 2 dc in first dc. *Ch 7. Miss next ch-5 sp. 1 sc in next ch-3 sp. Ch 3. 1 sc in next ch-3 sp. Ch 7.** Shell in ch-1 sp of next shell. Rep from *ending last rep at **. 3 dc in top of turning ch. Turn.

Rep 2nd to 8th rows for pat 6 times more.

Do not fasten off.

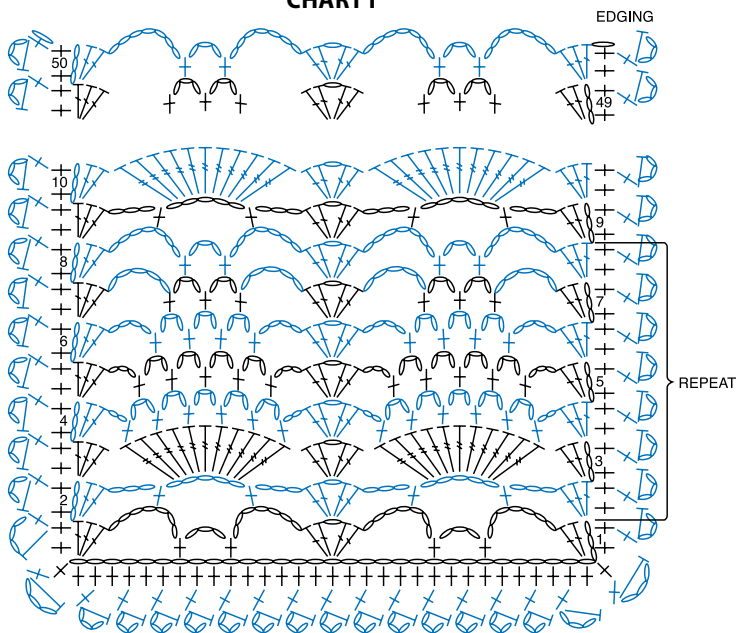
Edging: 1st row: (WS). Ch 1. Working across side of Shawl, work 2 sc in each dc down left side edge to corner (100 sc). 1 sc in corner. 1 sc in each of rem loop of foundation ch. 1 sc in corner. 2 sc in each dc up right side edge to corner. Turn. 593 sc.

2nd row: Ch 1. 1 sc in first sc. *Ch 3. 1 hdc in top of last sc worked. Miss next sc. 1 sc in next sc. Rep from * around to first sc of previous row. Fasten off.

FINISHING

Pin Shawl to measurements and cover with damp cloth leaving cloth to dry. **BERNAT**

CHART I



KEY

○ = chain (ch)

⊥ = single crochet (sc)

⊥ = half double crochet (hdc)

⊥ = double crochet (dc)

⊥ = treble crochet (tr)

Canadian & U.K. Sizes	3/0	2/0	1/0	1	1.5	2	2.5	3	4	5	5.5	6	6.5	7
Metric Sizes (mm)	3	2.5		2		1.75	1.5	1.25	1	.75		.6		
U.S. Sizes	1	2	3	4	5	6	7	8	9	10	11	12	13	14

Steel crochet hook conversion charts can vary. The important thing to remember is that the size of hook to use is the one which gives you the stated stitch gauge which, when correct, will produce the measurements specified.

Crochet Hook Conversion Chart

Canadian & U.K. Sizes	000	00	0	2	3	4	5	6	7	8	-	9	10	11	-	12	13	14
Metric Sizes (mm)	10	9	8	7	6.50	6	5.50	5	4.50	4	3.75	3.5	3.25	3	2.75	2.5	2.25	2
U.S. Sizes	N	M	L	-	K	J	I	H		G	F	E	D		C	-	B	-
	15	13	11		10½	10	9	8	7	6	5	4	3		2		1	

