

Pineapple Shawl

Adapted Michael Sellick

Intermediate



Caron® Simply Soft™
(6 oz / 170 g / 315 yds, 288 m)



Burgundy - 2 Balls

Hook

5 mm or US H/8

Abbreviations

Ch = Chain
Dc = Double Crochet
Rep = Repeat
St = Stitch(es)
Tr = Treble

Project Size

60" wide x 13" long.

This pattern has been adapted from an existing pattern on Yarnspirations.com called the [Pineapple Lace Shawl](#).

Mikey has adapted the pattern from using Bernat Handicrafter Thread to Caron Simply Soft. This adaptation required a change of yarn which changed the starting stitch count. The pattern is still the property of Yarnspirations but re-written for your convenience.

Multiples

To make this pattern in a different size, the multiple chain count is **15+5**.

Pattern Tips

There are 13 pineapples across in the adapted shawl.

Just add more multiples if you prefer the shawl to be wider. Add more rows if you prefer the shawl to be longer.

Instructions

Diagram is available to make it easier to follow along.

Note: Ch 3 at beg of row counts as dc throughout.

Ch 200.

1st row: (RS). 2 dc in 4th ch from hook.*Ch 7. Miss next 5 ch. 1 sc in next ch. Ch 3. Miss next 2 ch. 1 sc in next ch. Ch 7. Miss next 5 ch.** (2 dc. Ch 1. 2 dc) in next ch. – shell made. Rep from *, ending last rep at **. 3 dc in last ch. Turn.

2nd row: Ch 3. 2 dc in first dc. *Ch 3. 1 sc in next ch-7 sp. Ch 5. 1 sc in next ch-7 sp.** Ch 3. Shell in ch-1 sp of next shell. Rep from *, ending last rep at **. Ch 3. 3 dc in top of turning ch. Turn.

3rd row: Ch 3. 2 dc in first dc. *11 tr in next ch-5 sp.** Shell in ch-1 sp of next shell. Rep from *, ending last rep at **. 3 dc in top of turning ch. Turn.

4th row: Ch 3. 2 dc in first dc. *Ch 2. 1 sc in first tr. (Ch 3. Miss next tr. 1 sc in next tr) 5 times. Ch 2.** Shell in ch-1 sp of next shell. Rep from *, ending last



Original Pattern

rep at **. 3 dc in top of turning ch. Turn.

5th row: Ch 3. 2 dc in first dc. *(Ch 3. 1 sc in next ch-3 sp) 5 times. Ch 3.** Shell in ch-1 sp of next shell. Rep from *, ending last rep at **. 3 dc in top of turning ch. Turn.

6th row: Ch 3. 2 dc in first dc. *Ch 4. Miss next ch-3 sp. 1 sc in next ch-3 sp. (Ch 3. 1 sc in next ch-3 sp) 3 times. Ch

Mikey's Designs



on
ravelry

Shawl

4.** Shell in ch-1 sp of next shell. Rep from *, ending last rep at **. 3 dc in top of turning ch. Turn.

7th row: Ch 3. 2 dc in first dc. *Ch 5. Miss next ch-4 sp. 1 sc in next ch-3 sp. (Ch 3. 1 sc in next ch-3 sp) twice. Ch 5.** Shell in ch-1 sp of next shell. Rep from *ending last rep at **. 3 dc in top of turning ch. Turn.

8th row: Ch 3. 2 dc in first dc. *Ch 7. Miss next ch-5 sp. 1 sc in next ch-3 sp. Ch 3. 1 sc in next ch-3 sp. Ch 7.** Shell in ch-1 sp of next shell. Rep from *ending last rep at **. 3 dc in top of turning ch. Turn.

Rep 2nd to 8th rows for pat 2 times more. Do not fasten off.

Edging

Edging: 1st row: (WS). Ch 1. Working across side of Shawl, work 2 sc in each dc down left side edge to corner (100 sc). 1 sc in corner. 1 sc in each of rem loop of foundation ch. 1 sc in corner. 2 sc in each dc up right side edge to corner. Turn.

2nd row: Ch 1. 1 sc in first sc. *Ch 3. 1 hdc in top of last sc worked. Miss next sc. 1 sc in next sc. Rep from * around to first sc of previous row. Fasten off.

Finishing

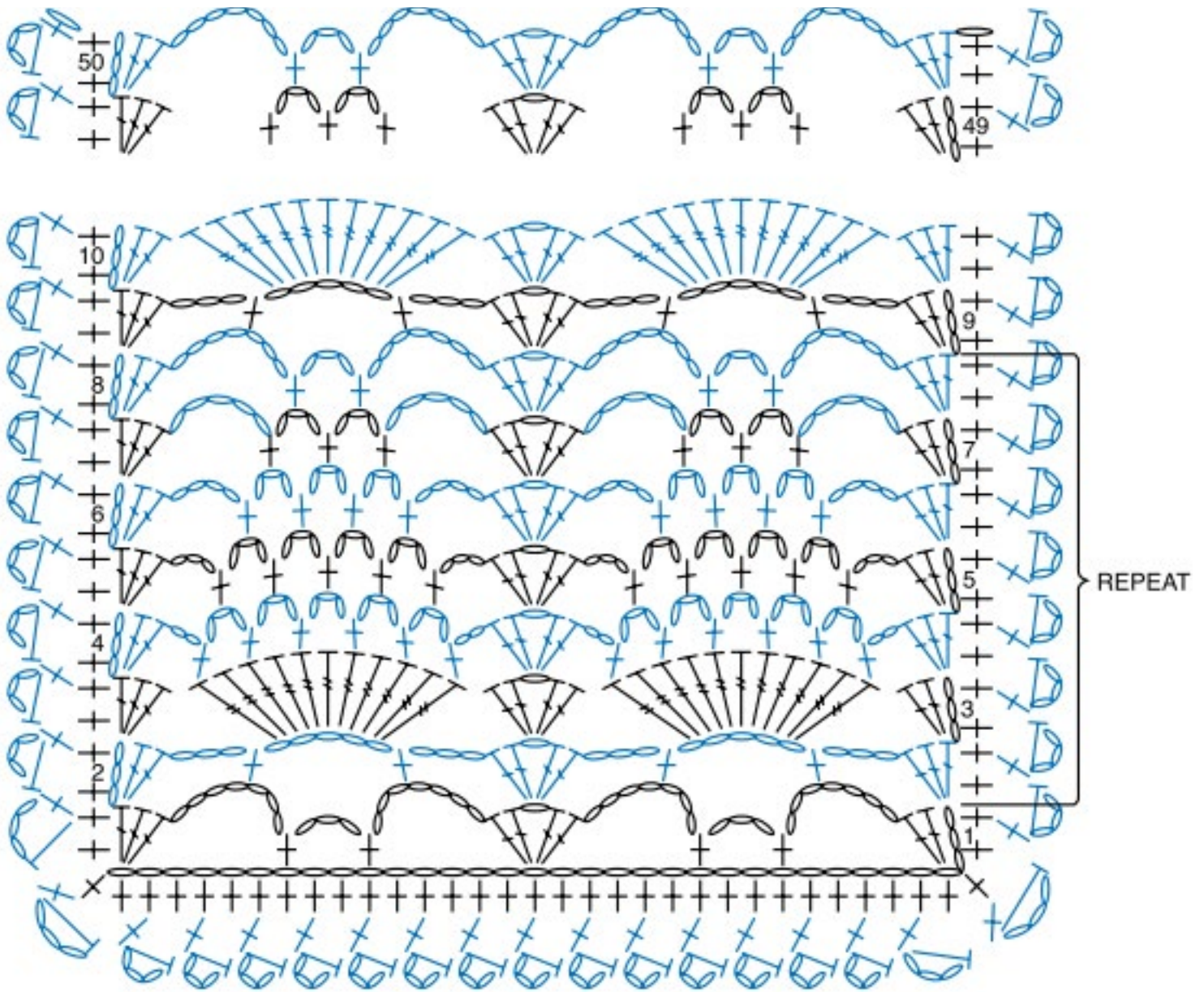
Pin Shawl to measurements and cover with damp cloth leaving cloth to dry.



All patterns and video tutorials are provided for free to all who wish to learn the art of crochet. From beginners and beyond.

Consider a donation on The Crochet Crowd Website to keep all of our content free to all. Stitch In & Donate.

Pineapple Lace Shawl Diagram



KEY

○ = chain (ch)

⊥ = single crochet (sc)

⊥ = half double crochet (hdc)

⊥ = double crochet (dc)

⊥ = treble crochet (tr)