

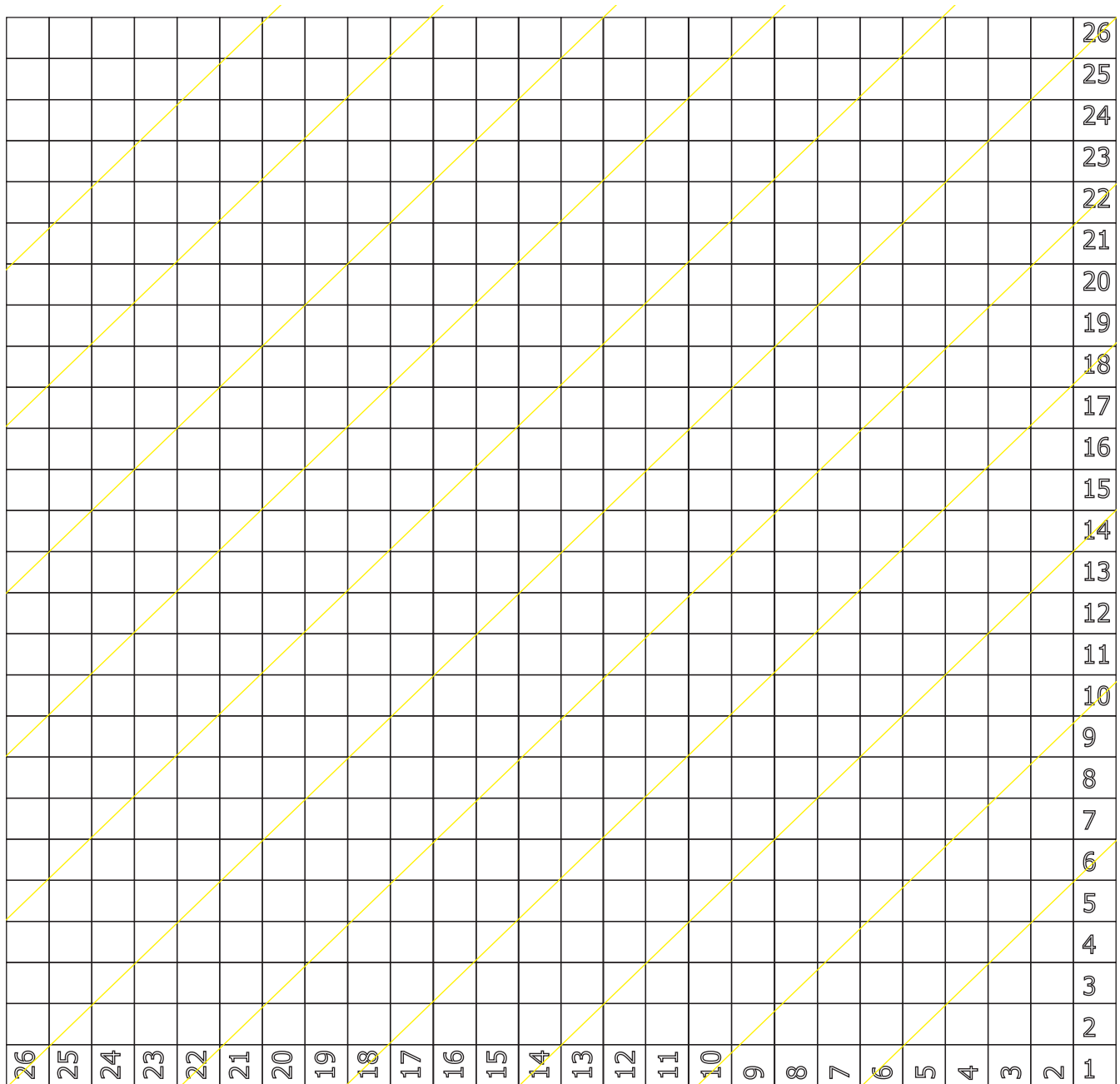
Alaskan Frontier C2C Pictorial Squares

Design Your Own - Designed by Daniel Zondervan



Designed for Project Linus Charity Squares for the Alaskan Crochet Cruise for June 2018. Cruisers please use squares that are 26 x 26 so they match.

Squares are 26 boxes wide by 26 boxes high. Approximately 20.5" x 20.5" without added border that is suggested in the blog article.



Using 5.5 mm or I crochet hook. Suggested yarn is Caron One Pound, Caron Simply Soft or equivalent. Suggested background should contrast the character.

Diagonal lines have been added to graph for easier to read and follow along. Please use all squares as seen in the graph including the squares with the row and column labels. Tilt the paper with the bottom right labeled #1 as the bottom of the paper. Mark each line as you complete.

C2C Tutorial on making characters is provided in blog write up. Crochet Cruisers are to add a border to their finished squares which is referred to in the blog article write up.