

## 2018 MYSTERY CROCHET ALONG



### CLUE #2 ABBREVIATIONS

**Beg** = Begin(ning)

**Ch** = Chain(s)

**Dc** = Double crochet

**Dtr** = (Yoh) 3 times and draw up a loop in indicated stitch. (Yoh and draw through 2 loops on hook) 4 times.

**Hdc** = Half double crochet

**Popcorn** = 5 dc in indicated stitch. Drop loop from hook. Insert hook from front to back in first of 5 dc. Pull dropped loop through.

**Rep** = Repeat

**Rnd(s)** = Round(s)

**Sl st** = Slip stitch

**Sp(s)** = Space(s)

**St(s)** = Stitch(es)

**Tr** = Treble crochet

**Trtr** = (Yoh) 4 times and draw up a loop in indicated stitch. (Yoh and draw through 2 loops on hook) 5 times.

**Yoh** = Yarn over hook



### CLUE #2

#### INSTRUCTIONS

**Note:** Ch 3 at beg of rnd counts as dc.

With B, ch 4. See diagram on page 3.

**1st rnd:** 11 dc in 4th ch from hook. Join with sl st to top of ch 3. 12 dc.

**2nd rnd:** Ch 3. 1 dc in same st as sl st. 2 dc in each dc around. Join with sl st to top of ch 3. 24 dc.

**3rd rnd:** Ch 3. Popcorn in next dc. Ch 1. \*1 dc in next dc. Popcorn in next dc. Ch 1. Rep from \* around. Join with sl st to top of ch 3.

**4th rnd:** Ch 3. 1 dc in top of Popcorn. 2 dc in next ch-1 sp. \*1 dc in each of next 2 sts. 2 dc in next ch-1 sp. Rep from \* around. Join with sl st to top of ch 3. 48 dc.

**5th rnd:** Ch 6 (counts as trtr). 1 dtr in same st as sl st. 1 tr in next dc. 1 dc in each of next 2 dc. 1 hdc in each of next 4 dc. 1 dc in each of next 2 dc. 1 tr in next dc. (1 dtr.

1 trtr) in next dc. Ch 2. \*(1 trtr. 1 dtr) in next dc. 1 tr in next dc. 1 dc in each of next 2 dc. 1 hdc in each of next 4 dc. 1 dc in each of next 2 dc. 1 tr in next dc. (1 dtr. 1 trtr) in next dc. Ch 2. Rep from \* twice more. Join with sl st to top of ch 6.

**6th rnd:** Ch 3. 1 dc in next st. (Popcorn in next st. 1 dc in each of next 2 sts) 4 times. (2 dc. Ch 2. 2 dc) all in next ch-2 sp. (\*1 dc in each of next 2 sts. Popcorn in next st) 4 times. 1 dc in each of next 2 sts. (2 dc. Ch 2. 2 dc) all in next ch-2 sp. Rep from \* twice more. Join with sl st to top of ch 3.

**7th rnd:** Ch 3. \*1 dc in next dc. 1 dc in each st to next corner ch-2 sp. (2 dc. Ch 2. 2 dc) all in ch-2 sp. Rep from \* 3 times more. 1 dc in each of next 2 dc. Join with sl st to top of ch 3.

## 2018 MYSTERY CROCHET ALONG

**8th rnd:** Ch 3. \*1 dc in next dc. 1 dc in each dc to next corner ch-2 sp. (2 dc. Ch 2. 2 dc) all in ch-2 sp. Rep from \* 3 times more. 1 dc in each of next 4 dc. Join with sl st to top of ch 3.

**9th rnd:** Ch 3. 1 dc in next dc. (Popcorn in next dc. 1 dc in each of next 2 dc) 6 times. (2 dc. Ch 2. 2 dc) all in next ch-2 sp. \*1 dc in each of next 2 dc. (Popcorn in next dc. 1 dc in each of next 2 dc) 8 times. (2 dc. Ch 2. 2 dc) all in next ch-2 sp. Rep from \* twice more. (1 dc in each of next 2 dc. Popcorn in next dc) twice. Join with sl st to top of ch 3.

**10th rnd:** Ch 3. \*1 dc in next dc. 1 dc in each st to next corner ch-2 sp. (2 dc. Ch 2. 2 dc) all in ch-2 sp. Rep from \* 3 times more. 1 dc in each of next 8 sts. Join with sl st to top of ch 3.

**11th rnd:** Ch 3. \*1 dc in next dc. 1 dc in each dc to next corner ch-2 sp. (2 dc. Ch 2. 2 dc) all in ch-2 sp. Rep from \* 3 times more. 1 dc in each of next 10 dc. Join with sl st to top of ch 3.

**12th rnd:** Ch 3. 1 dc in next dc. (Popcorn in next dc. 1 dc in each of next 2 dc) 8 times. (2 dc. Ch 2. 2 dc) all in next ch-2 sp. \*1 dc in each of next 2 dc. (Popcorn in next dc. 1 dc in each of next 2 dc) 12 times. (2 dc. Ch 2. 2 dc) all in next ch-2 sp. Rep from \* twice more. 1 dc in each of next 2 dc. (Popcorn in next dc. 1 dc in each of next 2 dc) 3 times. Popcorn in next dc. Join with sl st to top of ch 3.

**13th rnd:** Ch 3. \*1 dc in next dc. 1 dc in each st to next corner ch-2 sp. (2 dc. Ch 2. 2 dc) all in ch-2 sp. Rep from \* 3 times more. 1 dc in each of next 14 sts. Join with sl st to top of ch 3.

**14th rnd:** Ch 3. \*1 dc in next dc. 1 dc in each dc to next corner ch-2 sp. (2 dc. Ch 2. 2 dc) all in ch-2 sp. Rep from \* 3 times more. 1 dc in each of next 16 dc. Join with sl st to top of ch 3.

**15th rnd:** Ch 3. 1 dc in next dc. (Popcorn in next dc. 1 dc in each of next 2 dc) 10 times. (2 dc. Ch 2. 2 dc) all in next ch-2 sp. \*1 dc in each of next 2 dc. (Popcorn in

next dc. 1 dc in each of next 2 dc) 16 times. (2 dc. Ch 2. 2 dc) all in next ch-2 sp. Rep from \* twice more. 1 dc in each of next 2 dc. (Popcorn in next dc. 1 dc in each of next 2 dc) 5 times. Popcorn in next dc. Join with sl st to top of ch 3.

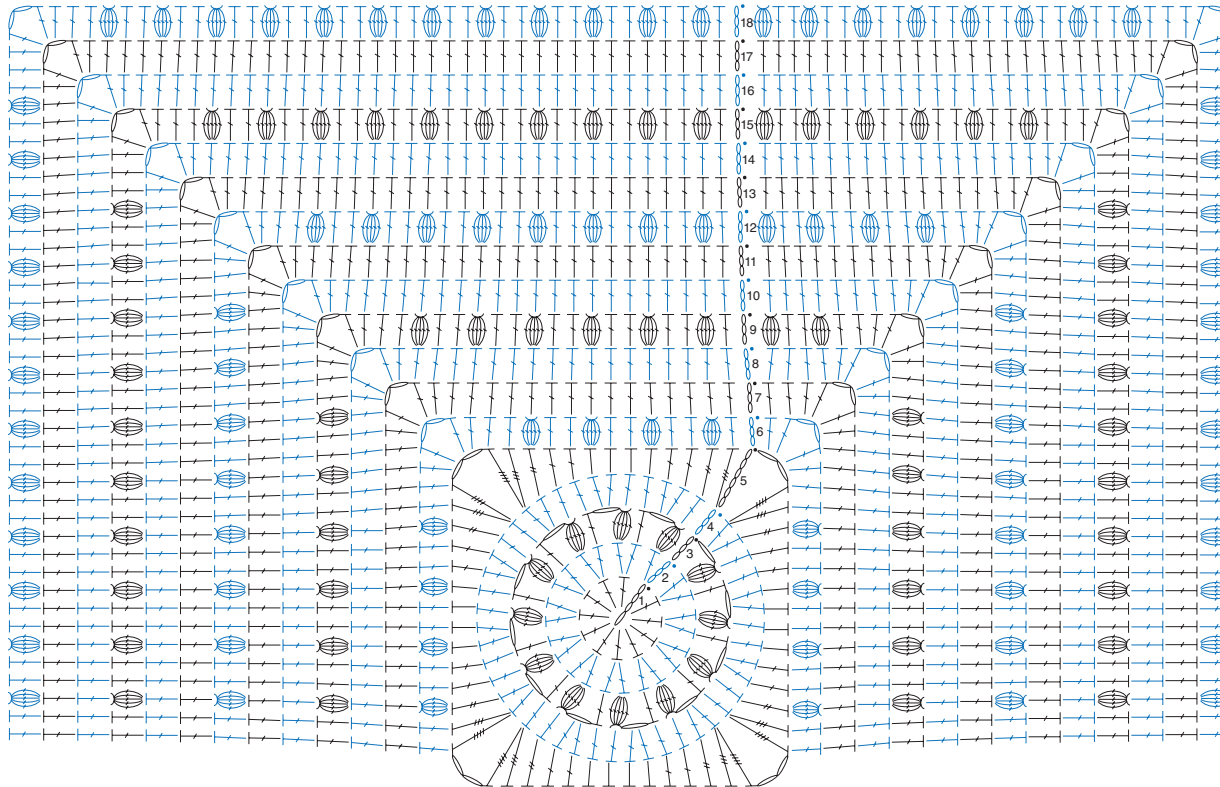
**16th rnd:** Ch 3. \*1 dc in next dc. 1 dc in each st to next corner ch-2 sp. (2 dc. Ch 2. 2 dc) all in ch-2 sp. Rep from \* 3 times more. 1 dc in each of next 20 sts. Join with sl st to top of ch 3.

**17th rnd:** Ch 3. \*1 dc in next dc. 1 dc in each dc to next corner ch-2 sp. (2 dc. Ch 2. 2 dc) all in ch-2 sp. Rep from \* 3 times more. 1 dc in each of next 22 dc. Join with sl st to top of ch 3.

**18th rnd:** Ch 3. 1 dc in next dc. (Popcorn in next dc. 1 dc in each of next 2 dc) 12 times. (2 dc. Ch 2. 2 dc) all in next ch-2 sp. \*1 dc in each of next 2 dc. (Popcorn in next dc. 1 dc in each of next 2 dc) 20 times. (2 dc. Ch 2. 2 dc) all in next ch-2 sp. Rep from \* twice more. 1 dc in each of next 2 dc. (Popcorn in next dc. 1 dc in each

of next 2 dc) 7 times. Popcorn in next dc. Join with sl st to top of ch 3. Fasten off.

## 2018 MYSTERY CROCHET ALONG



CLUE #2

### STITCH KEY

- = chain (ch)
- = slip stitch (sl st)
- ┆ = half double crochet (hdc)
- ┆/ = double crochet (dc)
- ┆// = treble crochet (tr)
- ┆/// = double treble crochet (dtr)
- ┆//// = triple treble crochet (trtr)
- ⊕ = popcorn