

2018 MYSTERY CROCHET ALONG



CLUE #3 ABBREVIATIONS

Beg = Begin(ning)

Ch = Chain(s)

Dc = Double crochet

Hdc = Half double crochet

Popcorn = 5 dc in indicated stitch. Drop loop from hook. Insert hook from front to back in first of 5 dc. Pull dropped loop through.

Rep = Repeat

Rnd(s) = Round(s)

Sl st = Slip stitch

Sp(s) = Space(s)

St(s) = Stitch(es)

Tr = Treble crochet

Trfp = (Yoh) twice and draw up a loop around post of next stitch at front of work, inserting hook from right to left. (Yoh and draw through 2 loops on hook) 3 times.

Yoh = Yarn over hook



CLUE #3

INSTRUCTIONS

Note: Ch 3 at beg of rnd counts as dc.

With A, ch 4. See diagram on page 3.

1st rnd: 11 dc in 4th ch from hook. Join with sl st to top of ch 3. 12 dc.

2nd rnd: Ch 3. 1 dc in same sp as sl st. 2 dc in each dc around. Join with sl st to top of ch 3. 24 dc.

3rd rnd: Ch 4 (counts as tr). 1 dc in same sp as sl st. *1 dc in next dc. 1 hdc in each of next 2 dc. 1 dc in next dc. (1 dc. 1 tr) in next dc. Ch 2. (1 tr. 1 dc) in next dc. Rep from * twice more. 1 dc in next dc. 1 hdc in each of next 2 dc. 1 dc in next dc. (1 dc. 1 tr) in next dc. Ch 2. Join with sl st to top of ch 4.

4th rnd: Ch 3. *1 dc in each st to next corner ch-2 sp. (2 dc. Ch 2. 2 dc) all in next ch-2 sp. Rep from * 3 times more. Join with sl st to top of ch 3.

5th rnd: Ch 3. *1 trfp around each of next 6 dc. 1 dc in each dc to next corner ch-2 sp. (Popcorn. Ch 2. Popcorn) all in next ch-2 sp. 1 dc in each of next 3 dc. Rep from * twice more. 1 trfp around each of next 6 dc. 1 dc in each dc to next corner ch-2 sp. (Popcorn. Ch 2. Popcorn) all in next ch-2 sp. 1 dc in each dc to first dc. Join with sl st to top of ch 3.

6th rnd: Ch 3. *Skip next 3 trfp. 1 trfp around each of next 3 trfp. 1 trfp around each of skipped trfp – Cr6trfp made. 1 dc in each dc to next Popcorn. 2 dc in next Popcorn. (Popcorn. Ch 2. Popcorn) all in next ch-2 sp. 2 dc in next popcorn. 1 dc in each dc to next trfp. Rep from * twice more. Cr6trfp. 1 dc in each dc to next Popcorn. 2 dc in next Popcorn. (Popcorn. Ch 2. Popcorn) all in next ch-2 sp. 2 dc in next popcorn. 1 dc in each dc to first dc. Join with sl st to top of ch 3.

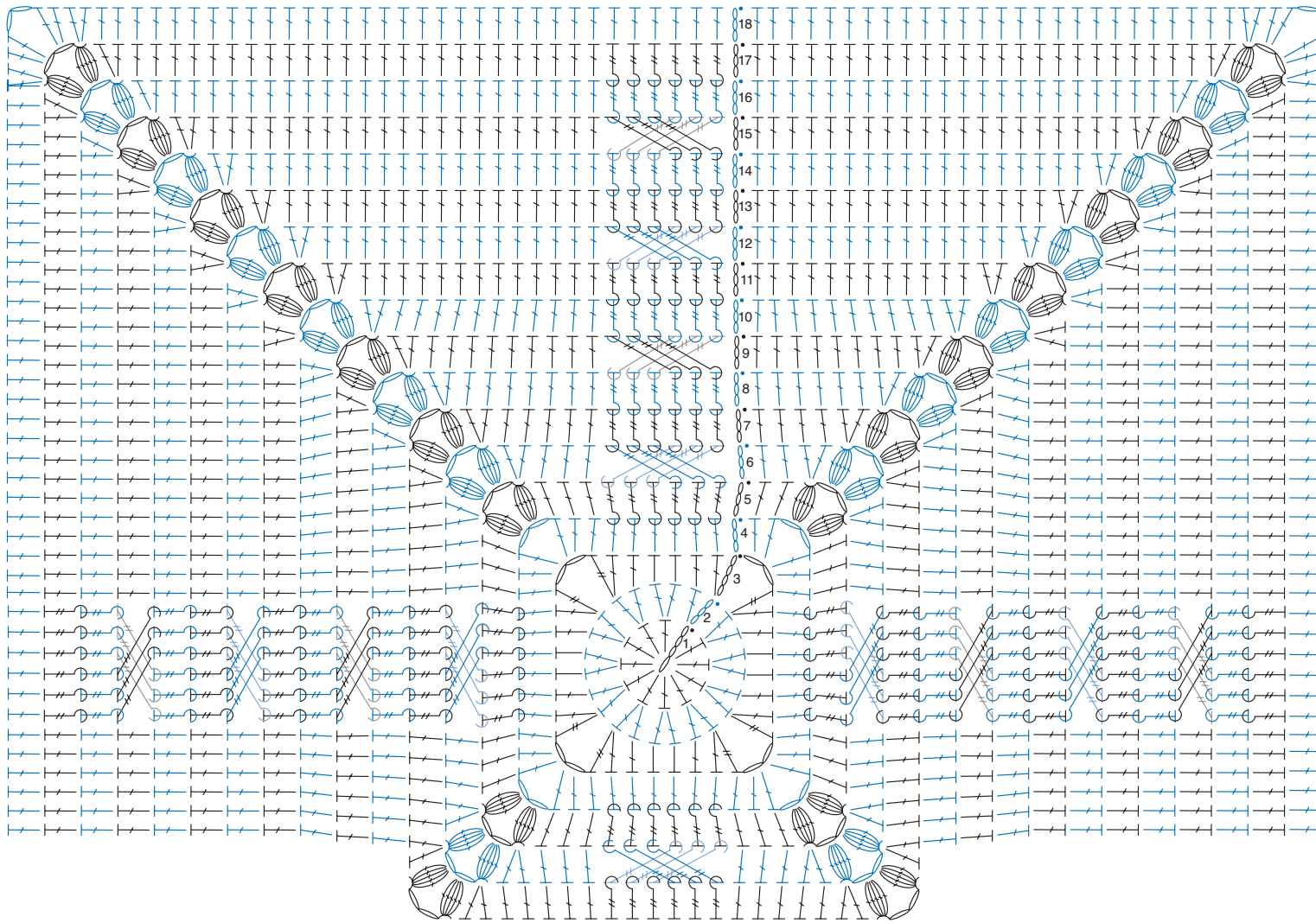
2018 MYSTERY CROCHET ALONG

7th and 8th rnds: Ch 3. *1 trfp around each of next 6 trfp. 1 dc in each dc to next Popcorn. 2 dc in next Popcorn. (Popcorn. Ch 2. Popcorn) all in next ch-2 sp. 2 dc in next popcorn. 1 dc in each dc to next trfp. Rep from * twice more. 1 trfp around each of next 6 trfp. 1 dc in each dc to next Popcorn. 2 dc in next Popcorn. (Popcorn. Ch 2. Popcorn) all in next ch-2 sp. 2 dc in next popcorn. 1 dc in each dc to first dc. Join with sl st to top of ch 3.

9th to 17th rnds: Rep 6th to 8th rnds 3 times more.

18th rnd: Ch 3. *1 dc in each st to next Popcorn. 2 dc in next Popcorn. (2 dc. Ch 2. 2 dc) all in next ch-2 sp. 2 dc in next Popcorn. Rep from * 3 times more. 1 dc in each st to first dc. Join with sl st to top of ch 3. Fasten off.

2018 MYSTERY CROCHET ALONG



CLUE #3

STITCH KEY

- = chain (ch)
- = slip stitch (sl st)
- ┆ = half double crochet (hdc)
- ┆ = double crochet (dc)
- ┆ = treble crochet (tr)
- ┆ = front post treble crochet (trfp)
- ⊖ = popcorn