

**CARON**<sup>®</sup> **ONE POUND**<sup>™</sup>

| **Stitch Along**

2018 SPRING CROCHET ALONG WITH JOANN FABRICS AND CRAFTS & THE CROCHET CROWD

**JOANN**



THE  
*Crochet*<sup>™</sup>  
CROWD



## 2018 MYSTERY CROCHET ALONG



### MATERIALS

**Caron® One Pound™** (16 oz/454 g; 812 yds/742 m)

**Note:** Quantities below are for complete Blanket.

#### Version 1

**Contrast A** Off White (10514)

**2 balls**

**Contrast B** Pale Green (10587)

**1 ball**

**Contrast C** Light Terracotta (15010)

**1 ball**

#### Version 2

**Contrast A** Off White (10514)

**2 balls**

**Contrast B** Soft Grey Mix (10616)

**1 ball**

**Contrast C** Hollyhock (15018)

**1 ball**

#### Version 3

**Contrast A** Sunflower (10549)

**2 balls**

**Contrast B** Dark Pink (10621)

**1 ball**

**Contrast C** Grass Green (10620)

**1 ball**

Size U.S. H/8 (5 mm) crochet hook **or size needed to obtain gauge.**

### CLUE #1 ABBREVIATIONS

**Approx** = Approximately

**Beg** = Begin(ning)

**Ch** = Chain(s)

**Dc** = Double crochet

**Rep** = Repeat

**Rnd(s)** = Round(s)

**Sl st** = Slip stitch

**Sp(s)** = Space(s)

### MEASUREMENT

Finished Blanket approx 57"  
[144.5 cm] square.

### GAUGE

12 dc and 6 rows = 4" [10 cm].



### CLUE #1

### INSTRUCTIONS

**Note:** Ch 3 at beg of rnd counts as dc.

With A, ch 4. See diagram on page 4.

**1st rnd:** [2 dc. (Ch 2. 3 dc) 3 times. Ch 2] all in 4th ch from hook. Join with sl st to top of ch 3.

**2nd rnd:** Sl st in each of next 2 dc and next ch-2 sp. Ch 3. (1 dc. Ch 2. 2 dc) in same ch-2 sp. 1 dc in each of next 3 dc. \*(2 dc. Ch 2. 2 dc) all in next ch-2 sp. 1 dc in each of next 3 dc. Rep from \* twice more. Join with sl st to top of ch 3.

**3rd rnd:** Sl st in next dc and next ch-2 sp. Ch 3. (1 dc. Ch 2. 2 dc) in same ch-2 sp. \*1 dc in each of next 3 dc. Ch 1. Skip next dc. 1 dc in each dc to next corner ch-2 sp. (2 dc. Ch 2. 2 dc) all in next ch-2 sp. Rep from \* twice more. 1 dc in each of next 3 dc. Ch 1. Skip next dc. 1 dc in each dc to end of rnd. Join with sl st to top of ch 3.

**4th rnd:** Sl st in next dc and next ch-2 sp. Ch 3. (1 dc. Ch 2. 2 dc) in same ch-2 sp. \*1 dc in each of next 4 dc. Ch 1. Skip next dc. 1 dc in next ch-1 sp. Ch 1. Skip next dc. 1 dc in each dc to next corner ch-2 sp. (2 dc. Ch 2. 2 dc) all in next ch-2 sp. Rep from \* twice more. 1 dc in each of next 4 dc. Ch 1. Skip next



## 2018 MYSTERY CROCHET ALONG

dc. 1 dc in next ch-1 sp. Ch 1. Skip next dc. 1 dc in each dc to end of rnd. Join with sl st to top of ch 3.

**5th rnd:** Sl st in next dc and next ch-2 sp. Ch 3. (1 dc. Ch 2. 2 dc) in same ch-2 sp. \*1 dc in each of next 5 dc. Ch 1. Skip next dc. 1 dc in each of next 3 sts. Ch 1. Skip next dc. 1 dc in each dc to next corner ch-2 sp. (2 dc. Ch 2. 2 dc) all in next ch-2 sp. Rep from \* twice more. 1 dc in each of next 5 dc. Ch 1. Skip next dc. 1 dc in each of next 3 sts. Ch 1. Skip next dc. 1 dc in each dc to end of rnd. Join with sl st to top of ch 3.

**6th rnd:** Sl st in next dc and next ch-2 sp. Ch 3. (1 dc. Ch 2. 2 dc) in same ch-2 sp. \*1 dc in each of next 6 dc. Ch 1. Skip next dc. 1 dc in each of next 5 sts. Ch 1. Skip next dc. 1 dc in each dc to next corner ch-2 sp. (2 dc. Ch 2. 2 dc) all in next ch-2 sp. Rep from \* twice more. 1 dc in each of next 6 dc. Ch 1. Skip next dc. 1 dc in each of next 5 sts. Ch 1. Skip next dc. 1 dc in each dc to end of rnd. Join with sl st to top of ch 3.

**7th rnd:** Sl st in next dc and next ch-2 sp. Ch 3. (1 dc. Ch 2. 2 dc) in same ch-2 sp. \*(1 dc in each of next 7 dc. Ch 1. Skip next dc) twice. 1 dc in each dc to next corner ch-2 sp. (2 dc. Ch 2. 2 dc) all in next ch-2 sp. Rep from \* twice more. (1 dc in each of next 7 dc. Ch 1. Skip next dc) twice. 1 dc in each of next 7 sts. Ch 1. Skip next dc. 1 dc in each dc to end of rnd. Join with sl st to top of ch 3.

**8th rnd:** Sl st in next dc and next ch-2 sp. Ch 3. (1 dc. Ch 2. 2 dc) in same ch-2 sp. \*1 dc in each of next 8 dc. Ch 1. Skip next dc. 1 dc in each of next 9 sts. Ch 1. Skip next dc. 1 dc in each dc to next corner ch-2 sp. (2 dc. Ch 2. 2 dc) all in next ch-2 sp. Rep from \* twice more. 1 dc in each of next 8 dc. Ch 1. Skip next dc. 1 dc in each of next 9 sts. Ch 1. Skip next dc. 1 dc in each dc to end of rnd. Join with sl st to top of ch 3.

**9th rnd:** Sl st in next dc and next ch-2 sp. Ch 3. (1 dc. Ch 2. 2 dc) in same ch-2 sp. \*1 dc in each of next 9 dc. Ch 1. Skip next dc. 1 dc in next ch-1 sp. Ch 1. Skip next dc.

1 dc in each of next 7 sts. Ch 1. Skip next dc. 1 dc in next ch-1 sp. Ch 1. Skip next dc. 1 dc in each dc to next corner ch-2 sp. (2 dc. Ch 2. 2 dc) all in next ch-2 sp. Rep from \* twice more. 1 dc in each of next 9 dc. Ch 1. Skip next dc. 1 dc in next ch-1 sp. Ch 1. Skip next dc. 1 dc in each of next 7 sts. Ch 1. Skip next dc. 1 dc in next ch-1 sp. Ch 1. Skip next dc. 1 dc in each dc to end of rnd. Join with sl st to top of ch 3.

**10th rnd:** Sl st in next dc and next ch-2 sp. Ch 3. (1 dc. Ch 2. 2 dc) in same ch-2 sp. \*1 dc in each of next 10 dc. Ch 1. Skip next dc. 1 dc in each of next 3 sts. Ch 1. Skip next dc. 1 dc in each of next 5 sts. Ch 1. Skip next dc. 1 dc in each of next 3 sts. Ch 1. Skip next dc. 1 dc in each dc to next corner ch-2 sp. (2 dc. Ch 2. 2 dc) all in next ch-2 sp. Rep from \* twice more. 1 dc in each of next 10 dc. Ch 1. Skip next dc. 1 dc in each of next 3 sts. Ch 1. Skip next dc. 1 dc in each of next 5 sts. Ch 1. Skip next dc. 1 dc in each of next 3 sts. Ch 1. Skip next dc. 1 dc in each dc

to end of rnd. Join with sl st to top of ch 3.

**11th rnd:** Sl st in next dc and next ch-2 sp. Ch 3. (1 dc. Ch 2. 2 dc) in same ch-2 sp. \*1 dc in each of next 11 dc. Ch 1. Skip next dc. 1 dc in each of next 5 sts. Ch 1. Skip next dc. 1 dc in each of next 3 sts. Ch 1. Skip next dc. 1 dc in each of next 5 sts. Ch 1. Skip next dc. 1 dc in each dc to next corner ch-2 sp. (2 dc. Ch 2. 2 dc) all in next ch-2 sp. Rep from \* twice more. 1 dc in each of next 11 dc. Ch 1. Skip next dc. 1 dc in each of next 5 sts. Ch 1. Skip next dc. 1 dc in each of next 3 sts. Ch 1. Skip next dc. 1 dc in each of next 5 sts. Ch 1. Skip next dc. 1 dc in each dc to end of rnd. Join with sl st to top of ch 3.

**12th rnd:** Sl st in next dc and next ch-2 sp. Ch 3. (1 dc. Ch 2. 2 dc) in same ch-2 sp. \*1 dc in each of next 12 dc. Ch 1. Skip next dc. 1 dc in each of next 7 sts. Ch 1. Skip next dc. 1 dc in next dc. Ch 1. Skip next dc. 1 dc in each of next 7 sts. Ch 1. Skip next dc. 1 dc in each dc to next corner



## 2018 MYSTERY CROCHET ALONG

ch-2 sp. (2 dc. Ch 2. 2 dc) all in next ch-2 sp. Rep from \* twice more. 1 dc in each of next 12 dc. Ch 1. Skip next dc. 1 dc in each of next 7 sts. Ch 1. Skip next dc. 1 dc in next st. Ch 1. Skip next dc. 1 dc in each of next 7 sts. Ch 1. Skip next dc. 1 dc in each dc to end of rnd. Join with sl st to top of ch 3.

**13th rnd:** Sl st in next dc and next ch-2 sp. Ch 3. (1 dc. Ch 2. 2 dc) in same ch-2 sp. \*1 dc in each of next 13 dc. (Ch 1. Skip next dc. 1 dc in each of next 9 sts) twice. Ch 1. Skip next dc. 1 dc in each dc to next corner ch-2 sp. (2 dc. Ch 2. 2 dc) all in next ch-2 sp. Rep from \* twice more. 1 dc in each of next 13 dc. (Ch 1. Skip next dc. 1 dc in each of next 9 sts) twice. Ch 1. 1 dc in each dc to end of rnd. Join with sl st to top of ch 3.

**14th rnd:** Sl st in next dc and next ch-2 sp. Ch 3. (1 dc. Ch 2. 2 dc) in same ch-2 sp. \*1 dc in each of next 14 dc. (Ch 1. Skip next dc. 1 dc in next ch-1 sp. Ch 1. Skip next dc. 1 dc in each of next 7 sts) twice. Ch 1. Skip next dc. 1 dc in next ch-1 sp. Ch 1. Skip next dc. 1 dc

in each dc to next corner ch-2 sp. (2 dc. Ch 2. 2 dc) all in next ch-2 sp. Rep from \* twice more. 1 dc in each of next 14 dc. (Ch 1. Skip next dc. 1 dc in next ch-1 sp. Ch 1. Skip next dc. 1 dc in each of next 7 sts) twice. Ch 1. Skip next dc. 1 dc in next ch-1 sp. Ch 1. Skip next dc. 1 dc in each dc to end of rnd. Join with sl st to top of ch 3.

**15th rnd:** Sl st in next dc and next ch-2 sp. Ch 3. (1 dc. Ch 2. 2 dc) in same ch-2 sp. \*1 dc in each of next 15 dc. (Ch 1. Skip next dc. 1 dc in each of next 3 sts. Ch 1. Skip next dc. 1 dc in each of next 5 sts) twice. Ch 1. Skip next dc. 1 dc in each of next 3 sts. Ch 1. Skip next dc. 1 dc in each dc to next corner ch-2 sp. (2 dc. Ch 2. 2 dc) all in next ch-2 sp. Rep from \* twice more. 1 dc in each of next 15 dc. (Ch 1. Skip next dc. 1 dc in each of next 3 sts. Ch 1. Skip next dc. 1 dc in each of next 5 sts) twice. Ch 1. Skip next dc. 1 dc in each of next 3 sts. Ch 1. Skip next dc. 1 dc in each dc to end of rnd. Join with sl st to top of ch 3.

**16th rnd:** Sl st in next dc and next ch-2 sp. Ch 3. (1 dc. Ch 2. 2 dc) in same ch-2 sp. \*1 dc in each of next 16 dc. (Ch 1. Skip next dc. 1 dc in each of next 5 sts. Ch 1. Skip next dc. 1 dc in each of next 3 sts) twice. Ch 1. Skip next dc. 1 dc in each of next 5 sts. Ch 1. Skip next dc. 1 dc in each dc to next corner ch-2 sp. (2 dc. Ch 2. 2 dc) all in next ch-2 sp. Rep from \* twice more. 1 dc in each of next 16 dc. (Ch 1. Skip next dc. 1 dc in each of next 5 sts. Ch 1. Skip next dc. 1 dc in each of next 3 sts) twice. Ch 1. Skip next dc. 1 dc in each dc to end of rnd. Join with sl st to top of ch 3.

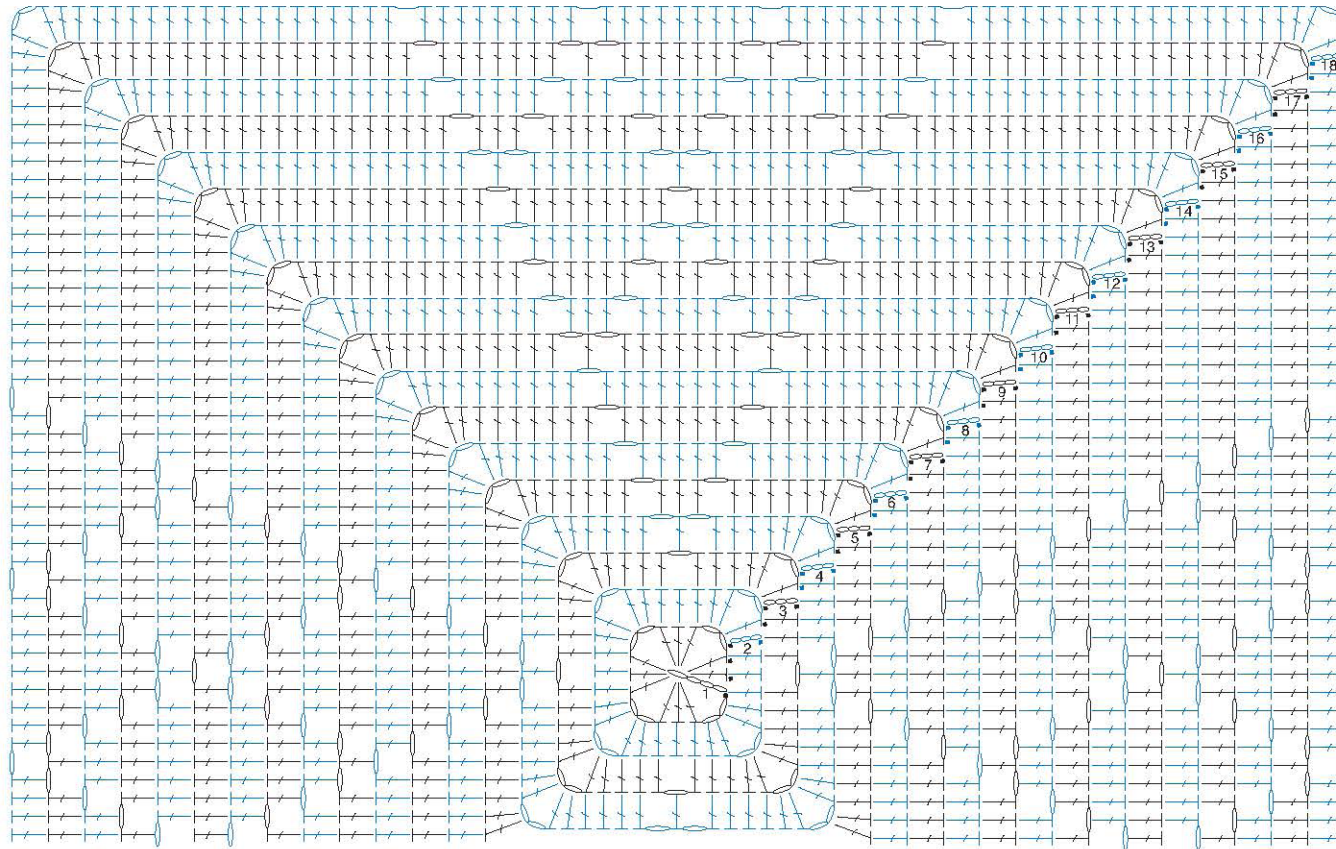
**17th rnd:** Sl st in next dc and next ch-2 sp. Ch 3. (1 dc. Ch 2. 2 dc) in same ch-2 sp. \*1 dc in each of next 17 dc. (Ch 1. Skip next dc. 1 dc in each of next 7 sts. Ch 1. Skip next dc. 1 dc in next dc) twice. Ch 1. Skip next dc. 1 dc in each of next 7 sts. Ch 1. Skip next dc. 1 dc in each dc to ch-2 sp. (2 dc. Ch 2. 2 dc) all in next ch-2 sp. Rep from \* twice more.

1 dc in each of next 17 dc. (Ch 1. Skip next dc. 1 dc in each of next 7 sts. Ch 1. Skip next dc. 1 dc in next dc) twice. Ch 1. Skip next dc. 1 dc in each of next 7 sts. Ch 1. Skip next dc. 1 dc in each dc to end of rnd. Rep from \* twice more. Join with sl st to top of ch 3.

**18th rnd:** Sl st in next dc and next ch-2 sp. Ch 3. (1 dc. Ch 2. 2 dc) in same ch-2 sp. \*1 dc in each of next 18 dc. (Ch 1. Skip next dc. 1 dc in each of next 9 sts) 3 times. Ch 1. Skip next dc. 1 dc in each dc to next corner ch-2 sp. (2 dc. Ch 2. 2 dc) all in next ch-2 sp. Rep from \* twice more. 1 dc in each of next 18 dc. (Ch 1. Skip next dc. 1 dc in each of next 9 sts) 3 times. Ch 1. Skip next dc. 1 dc in each dc to end of rnd. Join with sl st to top of ch 3. Fasten off.



2018 MYSTERY CROCHET ALONG



CLUE #1

- STITCH KEY
- = chain (ch)
  - = slip stitch (sl st)
  - ┆ = double crochet (dc)



## 2018 MYSTERY CROCHET ALONG



### CLUE #2 ABBREVIATIONS

**Beg** = Begin(ning)

**Ch** = Chain(s)

**Dc** = Double crochet

**Dtr** = (Yoh) 3 times and draw up a loop in indicated stitch. (Yoh and draw through 2 loops on hook) 4 times.

**Hdc** = Half double crochet

**Popcorn** = 5 dc in indicated stitch. Drop loop from hook. Insert hook from front to back in first of 5 dc. Pull dropped loop through.

**Rep** = Repeat

**Rnd(s)** = Round(s)

**Sl st** = Slip stitch

**Sp(s)** = Space(s)

**St(s)** = Stitch(es)

**Tr** = Treble crochet

**Trtr** = (Yoh) 4 times and draw up a loop in indicated stitch. (Yoh and draw through 2 loops on hook) 5 times.

**Yoh** = Yarn over hook



### CLUE #2

#### INSTRUCTIONS

**Note:** Ch 3 at beg of rnd counts as dc.

With B, ch 4. See diagram on page 3.

**1st rnd:** 11 dc in 4th ch from hook. Join with sl st to top of ch 3. 12 dc.

**2nd rnd:** Ch 3. 1 dc in same st as sl st. 2 dc in each dc around. Join with sl st to top of ch 3. 24 dc.

**3rd rnd:** Ch 3. Popcorn in next dc. Ch 1. \*1 dc in next dc. Popcorn in next dc. Ch 1. Rep from \* around. Join with sl st to top of ch 3.

**4th rnd:** Ch 3. 1 dc in top of Popcorn. 2 dc in next ch-1 sp. \*1 dc in each of next 2 sts. 2 dc in next ch-1 sp. Rep from \* around. Join with sl st to top of ch 3. 48 dc.

**5th rnd:** Ch 6 (counts as trtr). 1 dtr in same st as sl st. 1 tr in next dc. 1 dc in each of next 2 dc. 1 hdc in each of next 4 dc. 1 dc in each of next 2 dc. 1 tr in next dc. (1 dtr.

1 trtr) in next dc. Ch 2. \*(1 trtr. 1 dtr) in next dc. 1 tr in next dc. 1 dc in each of next 2 dc. 1 hdc in each of next 4 dc. 1 dc in each of next 2 dc. 1 tr in next dc. (1 dtr. 1 trtr) in next dc. Ch 2. Rep from \* twice more. Join with sl st to top of ch 6.

**6th rnd:** Ch 3. 1 dc in next st. (Popcorn in next st. 1 dc in each of next 2 sts) 4 times. (2 dc. Ch 2. 2 dc) all in next ch-2 sp. (\*1 dc in each of next 2 sts. Popcorn in next st) 4 times. 1 dc in each of next 2 sts. (2 dc. Ch 2. 2 dc) all in next ch-2 sp. Rep from \* twice more. Join with sl st to top of ch 3.

**7th rnd:** Ch 3. \*1 dc in next dc. 1 dc in each st to next corner ch-2 sp. (2 dc. Ch 2. 2 dc) all in ch-2 sp. Rep from \* 3 times more. 1 dc in each of next 2 dc. Join with sl st to top of ch 3.



## 2018 MYSTERY CROCHET ALONG

**8th rnd:** Ch 3. \*1 dc in next dc. 1 dc in each dc to next corner ch-2 sp. (2 dc. Ch 2. 2 dc) all in ch-2 sp. Rep from \* 3 times more. 1 dc in each of next 4 dc. Join with sl st to top of ch 3.

**9th rnd:** Ch 3. 1 dc in next dc. (Popcorn in next dc. 1 dc in each of next 2 dc) 6 times. (2 dc. Ch 2. 2 dc) all in next ch-2 sp. \*1 dc in each of next 2 dc. (Popcorn in next dc. 1 dc in each of next 2 dc) 8 times. (2 dc. Ch 2. 2 dc) all in next ch-2 sp. Rep from \* twice more. (1 dc in each of next 2 dc. Popcorn in next dc) twice. Join with sl st to top of ch 3.

**10th rnd:** Ch 3. \*1 dc in next dc. 1 dc in each st to next corner ch-2 sp. (2 dc. Ch 2. 2 dc) all in ch-2 sp. Rep from \* 3 times more. 1 dc in each of next 8 sts. Join with sl st to top of ch 3.

**11th rnd:** Ch 3. \*1 dc in next dc. 1 dc in each dc to next corner ch-2 sp. (2 dc. Ch 2. 2 dc) all in ch-2 sp. Rep from \* 3 times more. 1 dc in each of next 10 dc. Join with sl st to top of ch 3.

**12th rnd:** Ch 3. 1 dc in next dc. (Popcorn in next dc. 1 dc in each of next 2 dc) 8 times. (2 dc. Ch 2. 2 dc) all in next ch-2 sp. \*1 dc in each of next 2 dc. (Popcorn in next dc. 1 dc in each of next 2 dc) 12 times. (2 dc. Ch 2. 2 dc) all in next ch-2 sp. Rep from \* twice more. 1 dc in each of next 2 dc. (Popcorn in next dc. 1 dc in each of next 2 dc) 3 times. Popcorn in next dc. Join with sl st to top of ch 3.

**13th rnd:** Ch 3. \*1 dc in next dc. 1 dc in each st to next corner ch-2 sp. (2 dc. Ch 2. 2 dc) all in ch-2 sp. Rep from \* 3 times more. 1 dc in each of next 14 sts. Join with sl st to top of ch 3.

**14th rnd:** Ch 3. \*1 dc in next dc. 1 dc in each dc to next corner ch-2 sp. (2 dc. Ch 2. 2 dc) all in ch-2 sp. Rep from \* 3 times more. 1 dc in each of next 16 dc. Join with sl st to top of ch 3.

**15th rnd:** Ch 3. 1 dc in next dc. (Popcorn in next dc. 1 dc in each of next 2 dc) 10 times. (2 dc. Ch 2. 2 dc) all in next ch-2 sp. \*1 dc in each of next 2 dc. (Popcorn in

next dc. 1 dc in each of next 2 dc) 16 times. (2 dc. Ch 2. 2 dc) all in next ch-2 sp. Rep from \* twice more. 1 dc in each of next 2 dc. (Popcorn in next dc. 1 dc in each of next 2 dc) 5 times. Popcorn in next dc. Join with sl st to top of ch 3.

**16th rnd:** Ch 3. \*1 dc in next dc. 1 dc in each st to next corner ch-2 sp. (2 dc. Ch 2. 2 dc) all in ch-2 sp. Rep from \* 3 times more. 1 dc in each of next 20 sts. Join with sl st to top of ch 3.

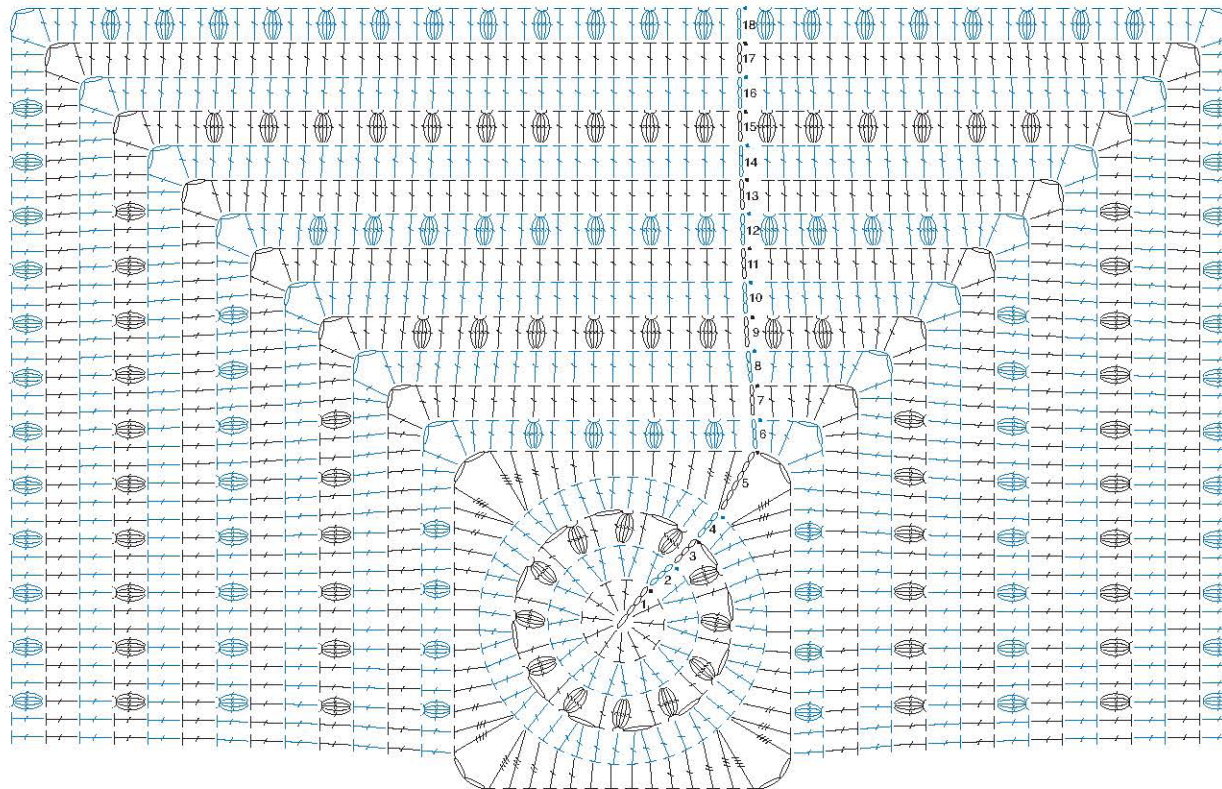
**17th rnd:** Ch 3. \*1 dc in next dc. 1 dc in each dc to next corner ch-2 sp. (2 dc. Ch 2. 2 dc) all in ch-2 sp. Rep from \* 3 times more. 1 dc in each of next 22 dc. Join with sl st to top of ch 3.

**18th rnd:** Ch 3. 1 dc in next dc. (Popcorn in next dc. 1 dc in each of next 2 dc) 12 times. (2 dc. Ch 2. 2 dc) all in next ch-2 sp. \*1 dc in each of next 2 dc. (Popcorn in next dc. 1 dc in each of next 2 dc) 20 times. (2 dc. Ch 2. 2 dc) all in next ch-2 sp. Rep from \* twice more. 1 dc in each of next 2 dc. (Popcorn in next dc. 1 dc in each

of next 2 dc) 7 times. Popcorn in next dc. Join with sl st to top of ch 3. Fasten off.











## 2018 MYSTERY CROCHET ALONG



CLUE #2

### STITCH KEY

-  = chain (ch)
-  = slip stitch (sl st)
-  = half double crochet (hdc)
-  = double crochet (dc)
-  = treble crochet (tr)
-  = double treble crochet (dtr)
-  = triple treble crochet (trtr)
-  = popcorn



## 2018 MYSTERY CROCHET ALONG



### CLUE #3 ABBREVIATIONS

**Beg** = Begin(ning)

**Ch** = Chain(s)

**Dc** = Double crochet

**Hdc** = Half double crochet

**Popcorn** = 5 dc in indicated stitch. Drop loop from hook. Insert hook from front to back in first of 5 dc. Pull dropped loop through.

**Rep** = Repeat

**Rnd(s)** = Round(s)

**Sl st** = Slip stitch

**Sp(s)** = Space(s)

**St(s)** = Stitch(es)

**Tr** = Treble crochet

**Trfp** = (Yoh) twice and draw up a loop around post of next stitch at front of work, inserting hook from right to left. (Yoh and draw through 2 loops on hook) 3 times.

**Yoh** = Yarn over hook

1 EASY

### CLUE #3

#### INSTRUCTIONS

**Note:** Ch 3 at beg of rnd counts as dc.

With A, ch 4. See diagram on page 3.

**1st rnd:** 11 dc in 4th ch from hook. Join with sl st to top of ch 3. 12 dc.

**2nd rnd:** Ch 3. 1 dc in same sp as sl st. 2 dc in each dc around. Join with sl st to top of ch 3. 24 dc.

**3rd rnd:** Ch 4 (counts as tr). 1 dc in same sp as sl st. \*1 dc in next dc. 1 hdc in each of next 2 dc. 1 dc in next dc. (1 dc. 1 tr) in next dc. Ch 2. (1 tr. 1 dc) in next dc. Rep from \* twice more. 1 dc in next dc. 1 hdc in each of next 2 dc. 1 dc in next dc. (1 dc. 1 tr) in next dc. Ch 2. Join with sl st to top of ch 4.

**4th rnd:** Ch 3. \*1 dc in each st to next corner ch-2 sp. (2 dc. Ch 2. 2 dc) all in next ch-2 sp. Rep from \* 3 times more. Join with sl st to top of ch 3.

**5th rnd:** Ch 3. \*1 trfp around each of next 6 dc. 1 dc in each dc to next corner ch-2 sp. (Popcorn. Ch 2. Popcorn) all in next ch-2 sp. 1 dc in each of next 3 dc. Rep from \* twice more. 1 trfp around each of next 6 dc. 1 dc in each dc to next corner ch-2 sp. (Popcorn. Ch 2. Popcorn) all in next ch-2 sp. 1 dc in each dc to first dc. Join with sl st to top of ch 3.

**6th rnd:** Ch 3. \*Skip next 3 trfp. 1 trfp around each of next 3 trfp. 1 trfp around each of skipped trfp – Cr6trfp made. 1 dc in each dc to next Popcorn. 2 dc in next Popcorn. (Popcorn. Ch 2. Popcorn) all in next ch-2 sp. 2 dc in next popcorn. 1 dc in each dc to next trfp. Rep from \* twice more. Cr6trfp. 1 dc in each dc to next Popcorn. 2 dc in next Popcorn. (Popcorn. Ch 2. Popcorn) all in next ch-2 sp. 2 dc in next popcorn. 1 dc in each dc to first dc. Join with sl st to top of ch 3.



**2018 MYSTERY CROCHET ALONG**

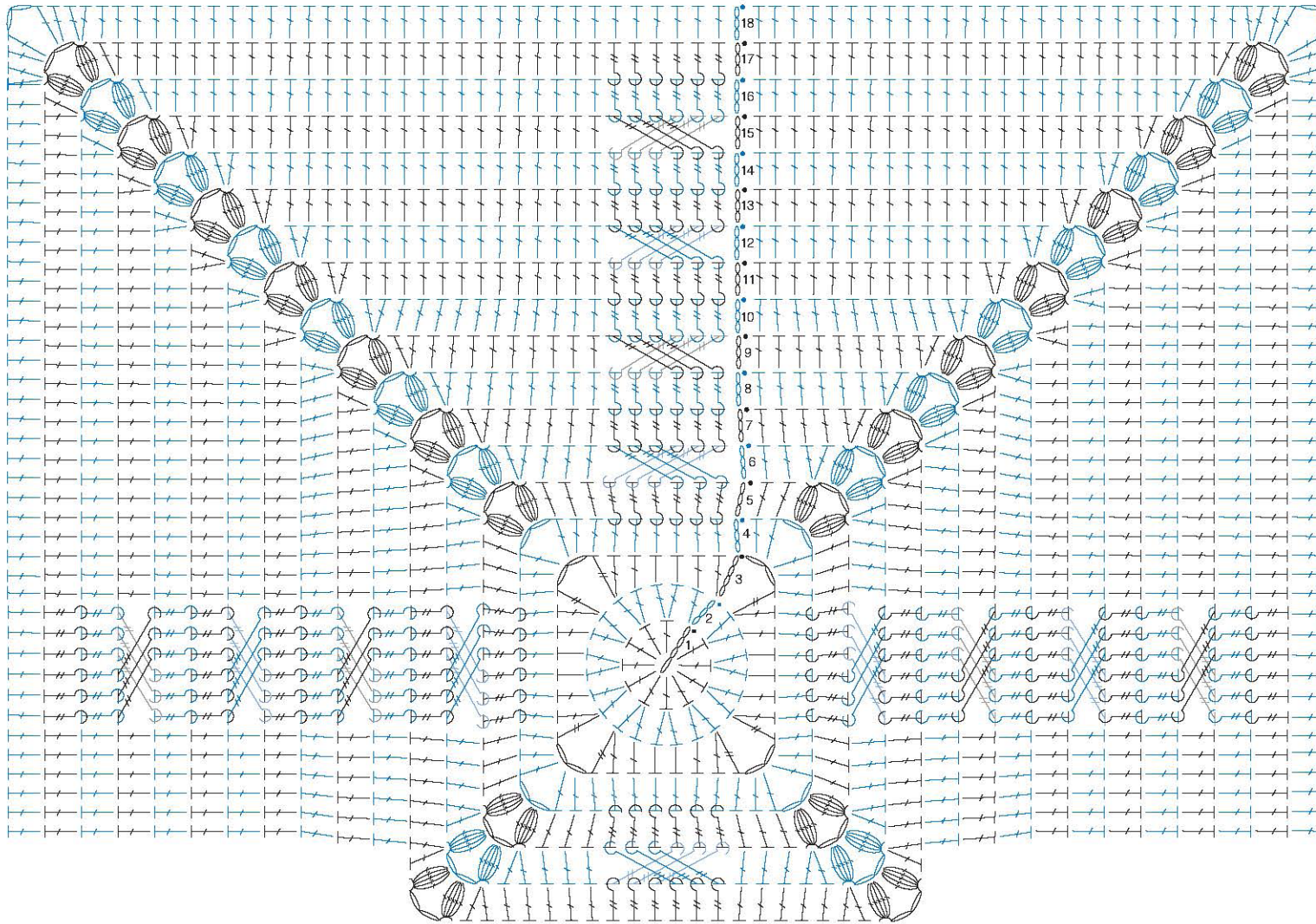
**7th and 8th rnds:** Ch 3. \*1 trfp around each of next 6 trfp. 1 dc in each dc to next Popcorn. 2 dc in next Popcorn. (Popcorn. Ch 2. Popcorn) all in next ch-2 sp. 2 dc in next popcorn. 1 dc in each dc to next trfp. Rep from \* twice more. 1 trfp around each of next 6 trfp. 1 dc in each dc to next Popcorn. 2 dc in next Popcorn. (Popcorn. Ch 2. Popcorn) all in next ch-2 sp. 2 dc in next popcorn. 1 dc in each dc to first dc. Join with sl st to top of ch 3.

**9th to 17th rnds:** Rep 6th to 8th rnds 3 times more.

**18th rnd:** Ch 3. \*1 dc in each st to next Popcorn. 2 dc in next Popcorn. (2 dc. Ch 2. 2 dc) all in next ch-2 sp. 2 dc in next Popcorn. Rep from \* 3 times more. 1 dc in each st to first dc. Join with sl st to top of ch 3. Fasten off.










## 2018 MYSTERY CROCHET ALONG



CLUE #3

### STITCH KEY

-  = chain (ch)
-  = slip stitch (sl st)
-  = half double crochet (hdc)
-  = double crochet (dc)
-  = treble crochet (tr)
-  = front post treble crochet (trfp)
-  = popcorn



## 2018 MYSTERY CROCHET ALONG



### CLUE #4 ABBREVIATIONS

**Alt** = Alternate  
**Beg** = Begin(ning)  
**Ch** = Chain(s)  
**Dc** = Double crochet  
**Pat** = Pattern  
**Rep** = Repeat

**Rnd(s)** = Round(s)  
**RS** = Right side  
**Sl st** = Slip stitch  
**Sp(s)** = Space(s)  
**St(s)** = Stitch(es)  
**Tog** = Together



### CLUE #4

#### INSTRUCTIONS

**Note:** Ch 3 at beg of rnd counts as dc.

Ch 4 at beg of rnd counts as dc and ch 1.

With C, ch 4. See diagram on page 3.

**1st rnd:** (2 dc. Ch 2. 3 dc. Ch 2. 3 dc. Ch 2. 3 dc. Ch 2) all in 4th ch from hook. Join with sl st to top of ch 3.

**2nd rnd:** Ch 3. \*1 dc in each st to next corner ch-2 sp. (2 dc. Ch 8. 2 dc) all in next ch-2 sp. Rep from \* 3 times more. Join with sl st to top of ch 3.

**3rd rnd:** Ch 4. Skip next dc. 1 dc in next dc. Ch 1. Skip next dc. 1 dc in next dc. \*(2 dc. Ch 8. 2 dc) all in next ch-8 sp. (1 dc in next dc. Ch 1. Skip next dc) 3 times. 1 dc in next dc. Rep from \* twice more. (2 dc. Ch 8. 2 dc) all in next ch-8 sp. 1 dc in next dc. Ch 1. Skip next dc. Join with sl st to 3rd ch of ch 4.

**4th and alt rnds:** Ch 3. \*1 dc in each st to next corner ch-8 sp. (2 dc. Ch 8. 2 dc) all in next ch-8 sp. Rep from \* 3 times more. 1 dc in each st to end of rnd. Join with sl st to top of ch 3.

**5th rnd:** Ch 4. Skip next dc. (1 dc in next dc. Ch 1. Skip next dc) 3 times. 1 dc in next dc. \*(2 dc. Ch 8. 2 dc) all in next ch-8 sp. (1 dc in next dc. Ch 1. Skip next dc) 7 times. 1 dc in next dc. Rep from \* twice more. (2 dc. Ch 8. 2 dc) all in next ch-8 sp. (1 dc in next dc. Ch 1. Skip next dc) 3 times. Join with sl st to 3rd ch of ch 4.

**7th rnd:** Ch 4. Skip next dc. (1 dc in next dc. Ch 1. Skip next dc) 5 times. 1 dc in next dc. \*(2 dc. Ch 8. 2 dc) all in next ch-8 sp. (1 dc in next dc. Ch 1. Skip next dc) 11 times. 1 dc in next dc. Rep from \* twice more. (2 dc. Ch 8. 2 dc) all in next ch-8 sp. (1 dc in next dc. Ch 1. Skip next dc) 5 times. Join with sl st to 3rd ch of ch 4.



## 2018 MYSTERY CROCHET ALONG

**9th rnd:** Ch 4. Skip next dc. (1 dc in next dc. Ch 1. Skip next dc) 7 times. 1 dc in next dc. \*(2 dc. Ch 8. 2 dc) all in next ch-8 sp. (1 dc in next dc. Ch 1. Skip next dc) 15 times. 1 dc in next dc. Rep from \* twice more. (2 dc. Ch 8. 2 dc) all in next ch-8 sp. (1 dc in next dc. Ch 1. Skip next dc) 7 times. Join with sl st to 3rd ch of ch 4.

**11th rnd:** Ch 4. Skip next dc. (1 dc in next dc. Ch 1. Skip next dc) 9 times. 1 dc in next dc. \*(2 dc. Ch 8. 2 dc) all in next ch-8 sp. (1 dc in next dc. Ch 1. Skip next dc) 19 times. 1 dc in next dc. Rep from \* twice more. (2 dc. Ch 8. 2 dc) all in next ch-8 sp. (1 dc in next dc. Ch 1. Skip next dc) 9 times. Join with sl st to 3rd ch of ch 4.

**13th rnd:** Ch 4. Skip next dc. (1 dc in next dc. Ch 1. Skip next dc) 11 times. 1 dc in next dc. \*(2 dc. Ch 8. 2 dc) all in next ch-8 sp. (1 dc in next dc. Ch 1. Skip next dc) 23 times. 1 dc in next dc. Rep from \* twice more. (2 dc. Ch 8. 2 dc) all in next ch-8 sp. (1 dc in next dc. Ch 1. Skip next dc) 11 times. Join with sl st to 3rd ch of ch 4.

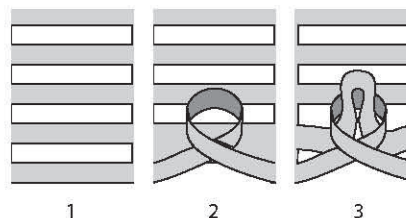
**15th rnd:** Ch 4. Skip next dc. (1 dc in next dc. Ch 1. Skip next dc) 13 times. 1 dc in next dc. \*(2 dc. Ch 8. 2 dc) all in next ch-8 sp. (1 dc in next dc. Ch 1. Skip next dc) 27 times. 1 dc in next dc. Rep from \* twice more. (2 dc. Ch 8. 2 dc) all in next ch-8 sp. (1 dc in next dc. Ch 1. Skip next dc) 13 times. Join with sl st to 3rd ch of ch 4.

**17th rnd:** Ch 4. Skip next dc. (1 dc in next dc. Ch 1. Skip next dc) 15 times. 1 dc in next dc. \*(2 dc. Ch 8. 2 dc) all in next ch-8 sp. (1 dc in next dc. Ch 1. Skip next dc) 31 times. 1 dc in next dc. Rep from \* twice more. (2 dc. Ch 8. 2 dc) all in next ch-8 sp. (1 dc in next dc. Ch 1. Skip next dc) 15 times. Join with sl st to 3rd ch of ch 4.

**18th rnd:** As 4th rnd. Fasten off.

### Chain Link Corners

With RS facing, twist 1st horizontal bar (corner ch 8 loop) from 2nd rnd to form loop. Draw 2nd horizontal bar through 1st bar without twisting. Rep, drawing next bar through previous bar without twisting until all bars have been worked. Sew last loop to second last loop to secure.



### FINISHING

Sew 4 Motifs tog as shown in picture on page 4.

### Border Stripe Pat

With A: 3 rnds.

With B: 3 rnds.

With C: 3 rnds.

These 9 rnds form Stripe Pat.

With RS facing, join A with sl st to any st on outer edge of Afghan.

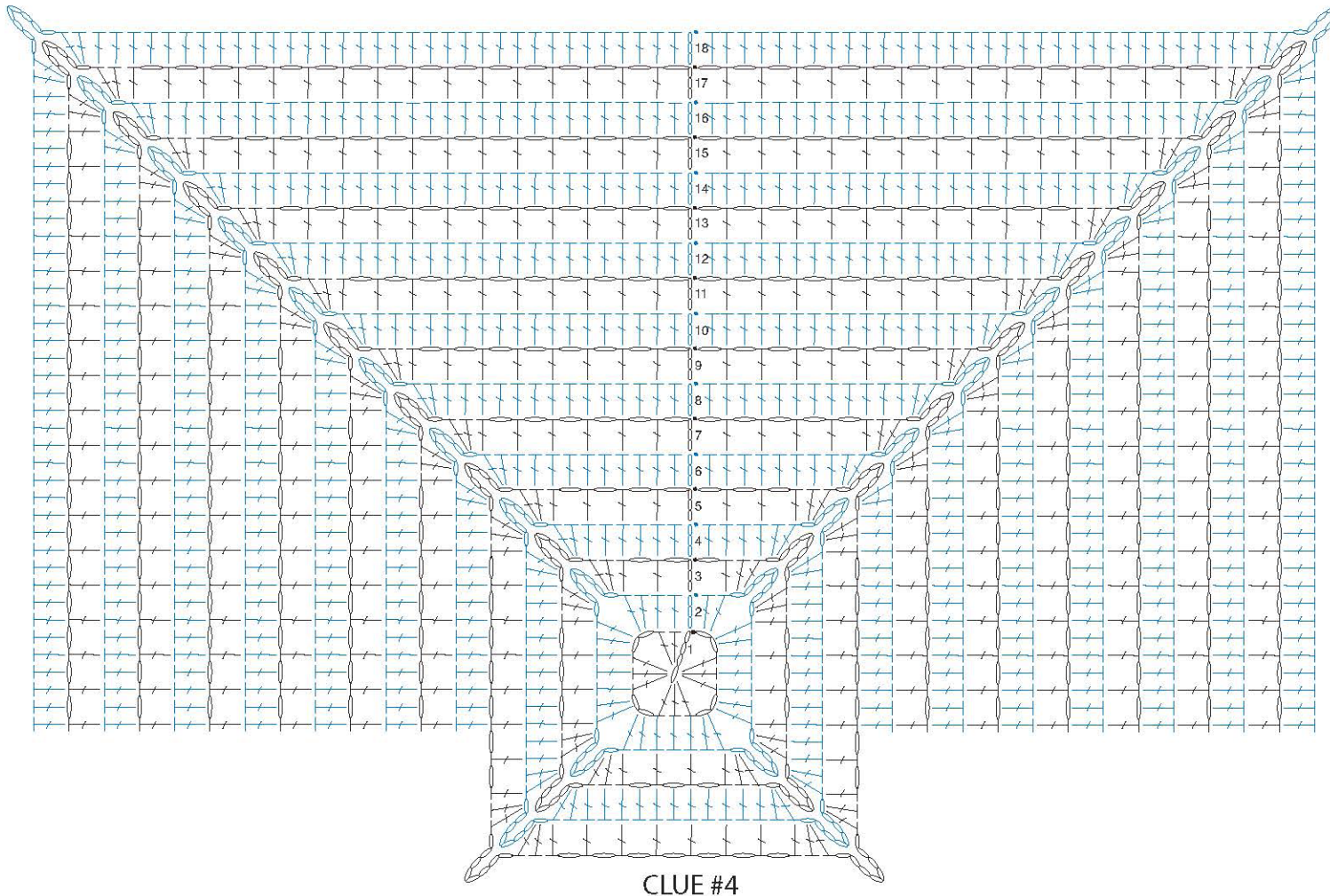
**1st rnd:** Ch 3. 1 dc in each st around working (2 dc. Ch 2. 2 dc) in each corner. Join with sl st to top of ch 3.

First rnd of Stripe Pat is complete. Rep last rnd until 9 rnds of Stripe Pat are complete.

Fasten off.



2018 MYSTERY CROCHET ALONG



- STITCH KEY
- = chain (ch)
  - = slip stitch (sl st)
  - T = double crochet (dc)



2018 MYSTERY CROCHET ALONG

