

DIAGONAL POPCORN STITCH CROCHET PILLOW



MATERIALS

Bernat® Velvet™ (10.5 oz/300 g; 315 yds/288 m)
Burgundy Plum (32007)

2 balls

Size U.S. J/10 (6 mm) crochet hook **or size needed to obtain gauge.**
18" square pillow form.

CLUE #1 ABBREVIATIONS

Approx = Approximate(ly)

Ch = Chain(s)

Dc = Double crochet

Pat = Pattern

Popcorn = 5 dc in next stitch.

Drop loop from hook. Re-insert hook from front to back into first of 5 dc and pull up dropped loop. Ch 1 to close popcorn– popcorn made

Rem = Remain(ing)

Rep = Repeat

RS = Right side

Sc = Single crochet

Sl st = Slip stitch

Sp = Space(s)

MEASUREMENT

Approx 18" [45.5 cm] square.

GAUGE

11 sc and 12 rows = 4" [10 cm].



EASY

CLUE #1

INSTRUCTIONS

FRONT

Ch 6.

1st row: (RS). 1 dc in 4th ch from hook. 1 dc in each of last 2 ch. Turn.

2nd row: Ch 6. 1 dc in 4th ch from hook. 1 dc in each of next 2 ch. Sl st to next ch-3 sp. Ch 3. 3 dc in same sp as sl st. Turn. 2 blocks.

3rd row: Ch 6. 1 dc in 4th ch from hook. Popcorn in next ch (push popcorn to front of work). 1 dc in next ch. *Sl st to first ch of next ch-3 sp. Ch 3. Popcorn in next ch of same ch-3 as sl st (push popcorn to front of work). 1 dc in next ch. Rep from * once more. Turn. 3 blocks.

DIAGONAL POPCORN STITCH CROCHET PILLOW

4th to 6th rows: Ch 6. 1 dc in 4th ch from hook and each of next 2 ch. *Sl st to next ch-3 sp. Ch 3. 3 dc in same sp as sl st. Rep from * to end of row. Turn.

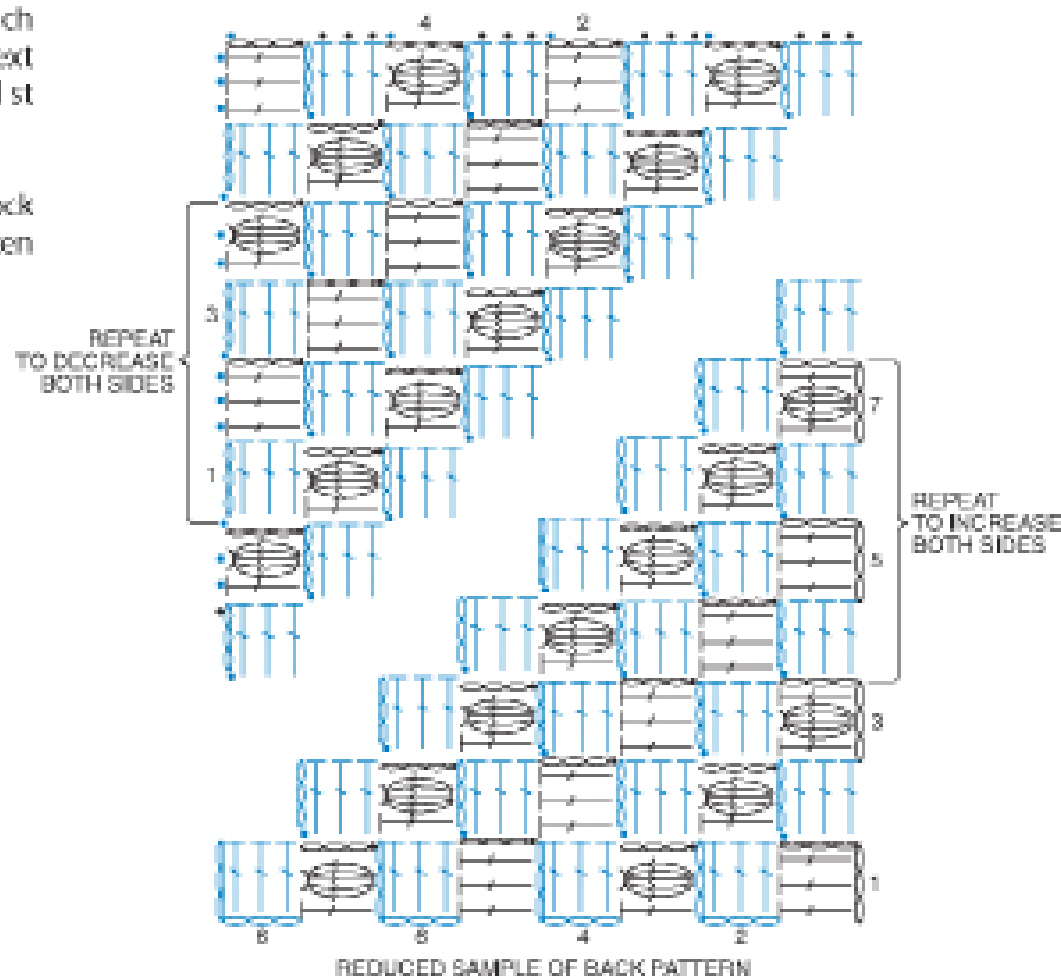
7th row: Ch 6. 1 dc in 4th ch from hook. Popcorn in next ch (push popcorn to front of work). 1 dc in next ch. *Sl st to first ch of next ch-3 sp. Ch 3. Popcorn in next ch of same ch-3 as sl st (push popcorn to front of work). 1 dc in next ch. Rep from * to end of row. Turn.

Rep 4th to 7th rows of pat until side edge measures approx 18" (45.5 cm), ending on a 7th row of pat.

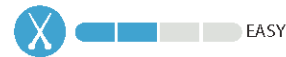
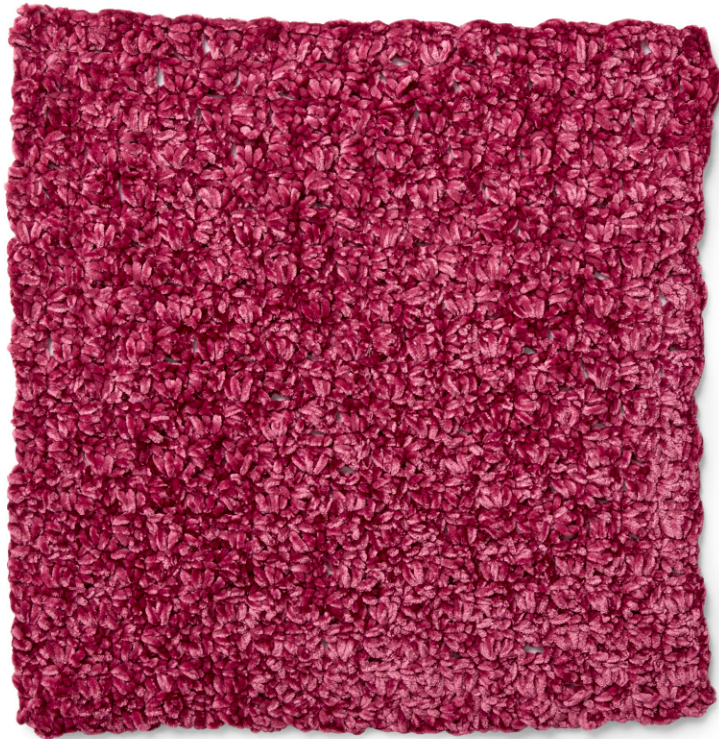
Proceed as follows: 1st to 3rd rows: Sl st in each st across to next ch-3 sp. *Sl st in next ch-3 sp. Ch 3. 3 dc in same sp as last sl st. Rep from * to last ch-3 sp. Sl st to last ch-3 sp. Turn.

4th row: (RS). Sl st in each of first 3 dc. *Sl st to first ch of next ch-3 sp. Ch 3. Popcorn in next ch of same ch-3 as sl st. 1 dc in next ch. Rep from * to last ch-3 sp. Sl st to last ch-3 sp. Turn.

Rep last 4 rows until only 1 block rem. Sl st to last ch-3 sp. Fasten off.



DIAGONAL POPCORN STITCH CROCHET PILLOW



CLUE #2

INSTRUCTIONS

BACK

Ch 6.

1st row: (RS). 1 dc in 4th ch from hook. 1 dc in each of last 2 ch. Turn.

2nd row: Ch 6. 1 dc in 4th ch from hook. 1 dc in each of next 2 ch. Sl st to next ch-3 sp. Ch 3. 3 dc in same sp as sl st. Turn. 2 blocks.

3rd row: Ch 6. 1 dc in 4th ch from hook. 1 dc in each of next 2 ch. *Sl st to next ch-3 sp. Ch 3. 3 dc in same sp as sl st. Rep from * once more. Turn. 3 blocks.

4th row: Ch 6. 1 dc in 4th ch from hook and each of next 2 ch. *Sl st to next ch-3 sp. Ch 3. 3 dc in same sp as sl st. Rep from * to end of row. Turn.

Rep 4th row of pat until side edge measures same length as Front.

Proceed as follows

1st row: Sl st in each of first 3 dc. *Sl st in next ch-3 sp. Ch 3. 3 dc in same sp as last sl st. Rep from * to last ch-3 sp. Sl st to last ch-3 sp. Turn.

Rep last row until only 1 block rem. Sl st to last ch-3 sp. Fasten off.

CLUE #2 ABBREVIATIONS

Ch = Chain(s)

Dc = Double crochet

Pat = Pattern

Rem = Remain(ing)

Rep = Repeat

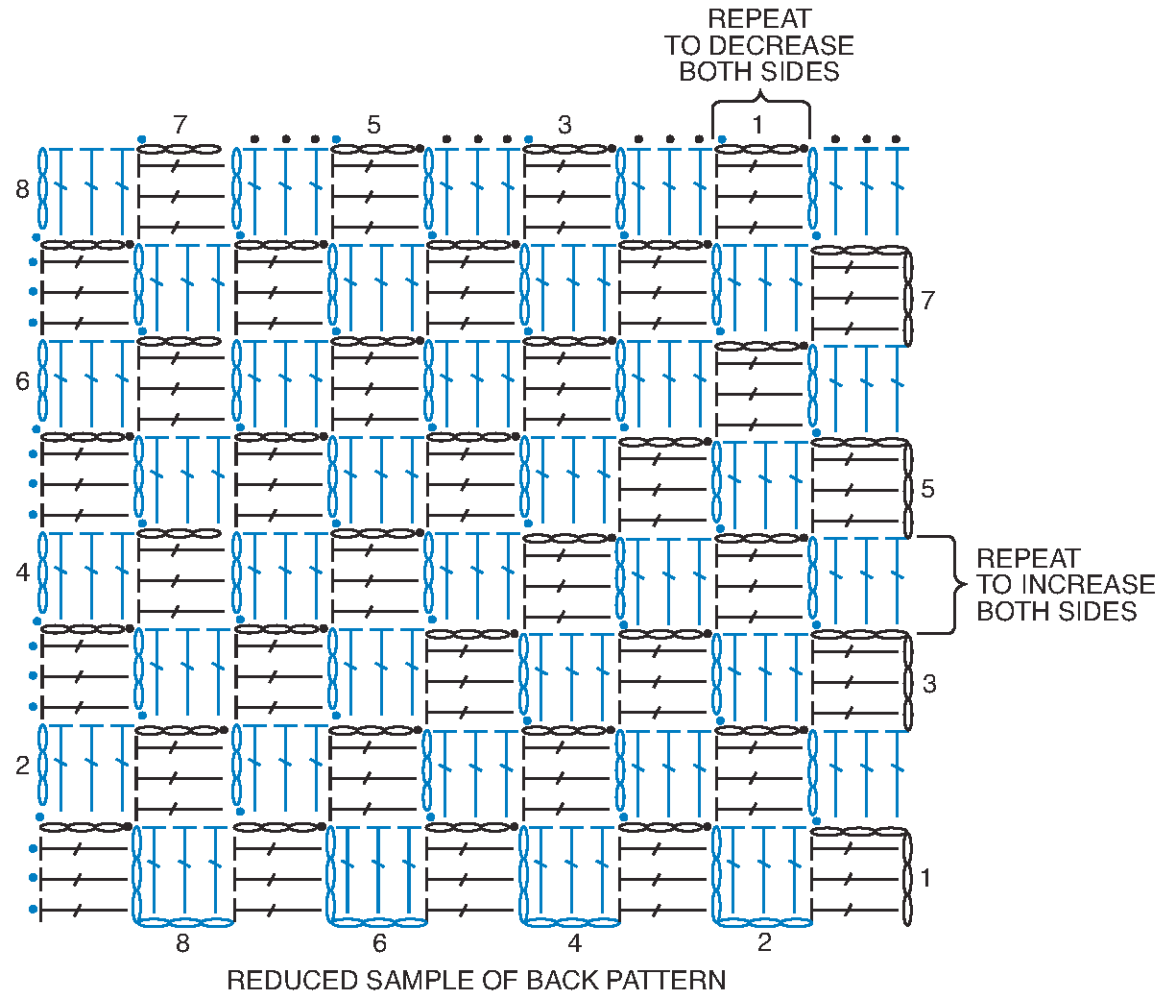
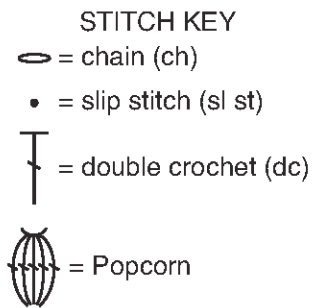
RS = Right side

Sl st = Slip stitch

Sp = Space(s)

BERNAT[®] Velvet[™] | Stitch Along

DIAGONAL POPCORN STITCH CROCHET PILLOW



DIAGONAL POPCORN STITCH CROCHET PILLOW



CLUE #3

INSTRUCTIONS

FINISHING

Sew 3 sides of Front and Back.
Insert pillow form. Sew opening closed.