

19 Alaskan Inspired

C2C Character Squares + 2 Bonus



THE
Crochet
CROWD

Designed for the Alaskan
Crochet Cruise charity project
2018.

©2019 The Crochet Crowd

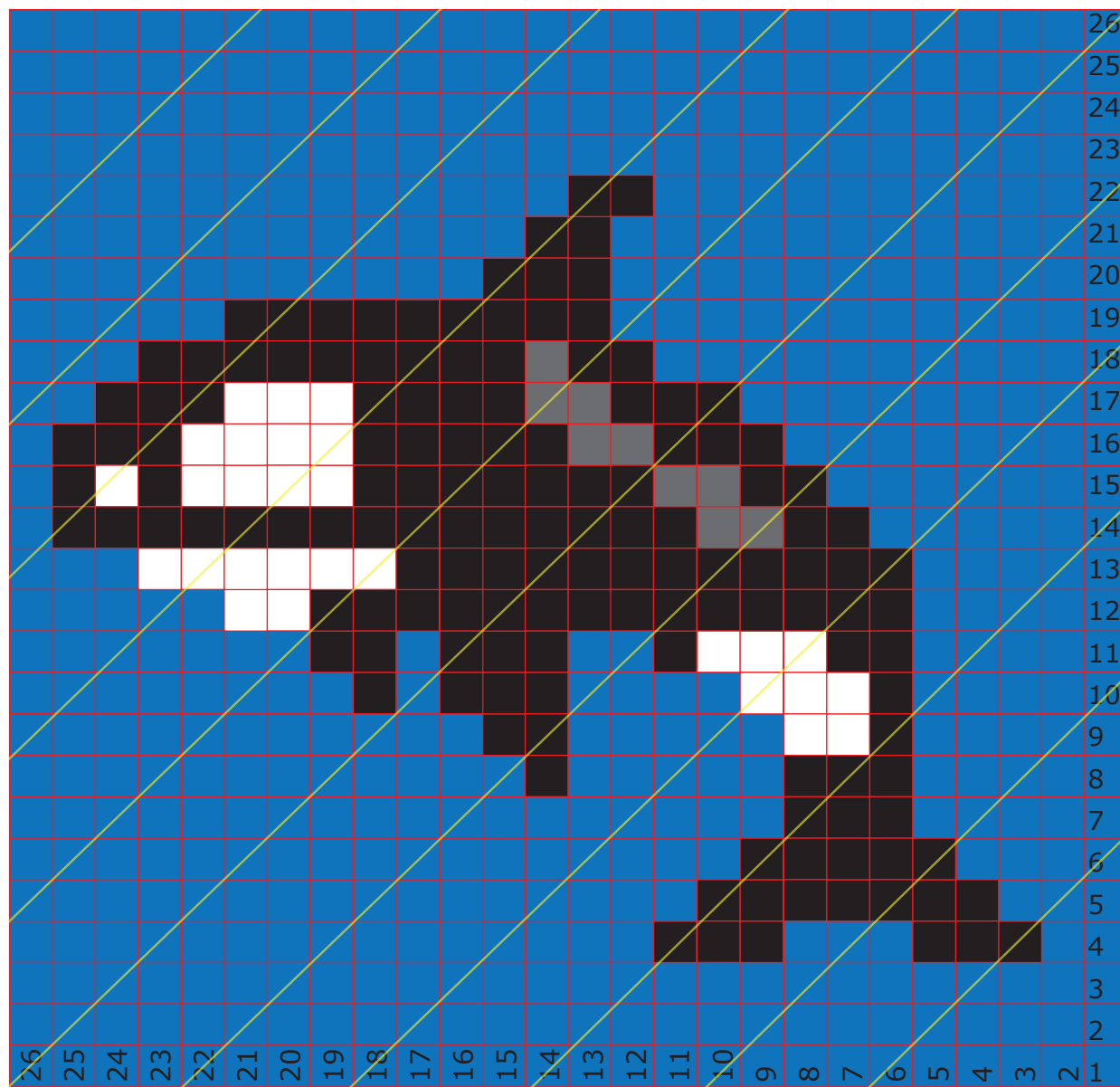
Alaskan Frontier C2C Pictorial Squares

Orca - Designed by Daniel Zondervan



Designed for Project Linus Charity Squares for the Alaskan Crochet Cruise for June 2018. Cruisers please use squares that are 26 x 26 so they match.

Squares are 26 boxes wide by 26 boxes high. Approximately 20.5" x 20.5" without added border that is suggested in the blog article.



Using 5.5 mm or I crochet hook. Suggested yarn is Caron One Pound, Caron Simply Soft or equivalent. Suggested background should contrast the character.

Diagonal lines have been added to graph for easier to read and follow along. Please use all squares as seen in the graph including the squares with the row and column labels. Tilt the paper with the bottom right labeled #1 as the bottom of the paper. Mark each line as you complete.

C2C Tutorial on making characters is provided in blog write up. Crochet Cruisers are to add a border to their finished squares which is referred to in the blog article write up.

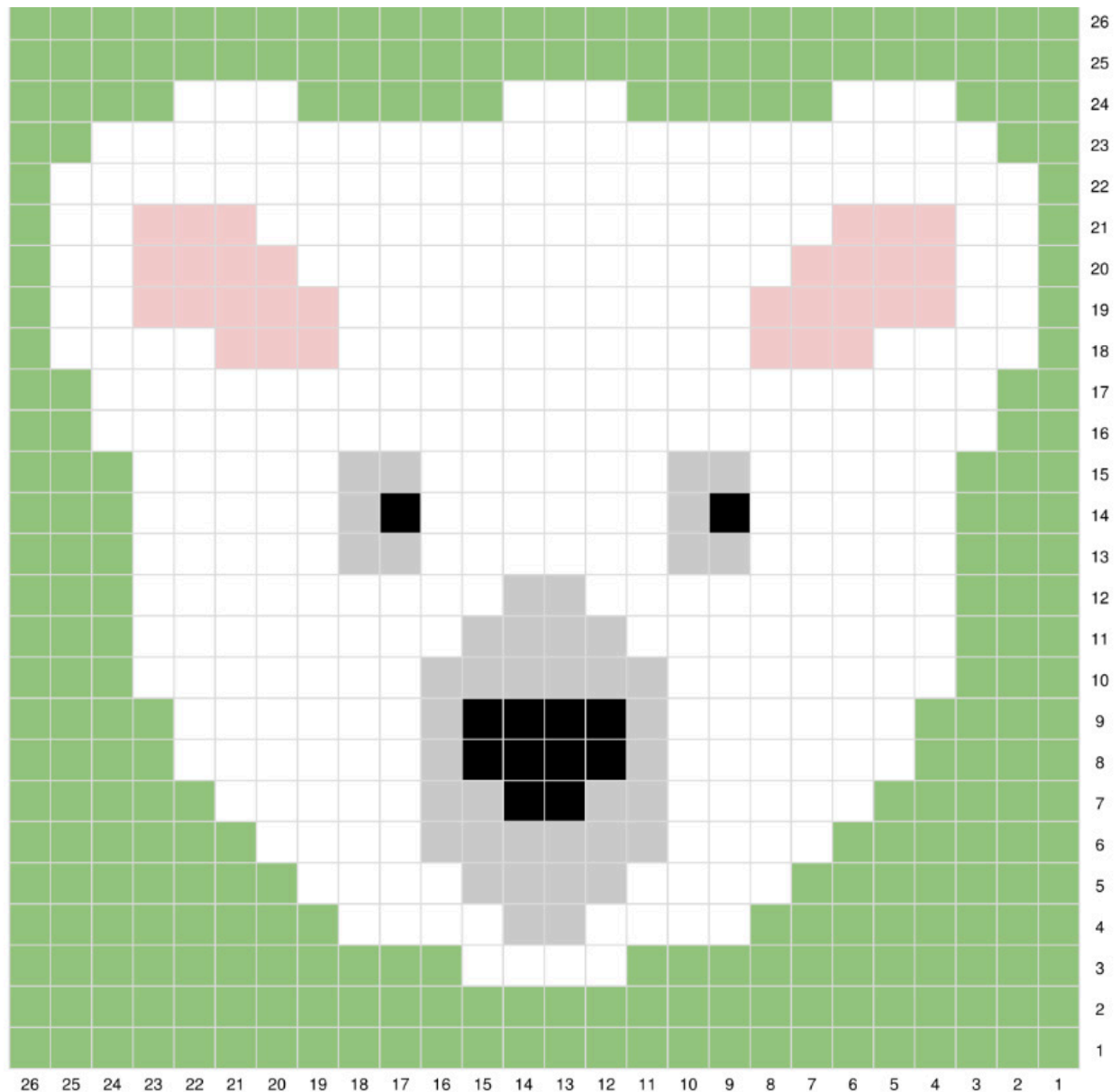
Alaskan Frontier C2C Pictorial Squares

Polar Bear - Designed by Steven Shumacher



Designed for Project Linus Charity Squares for the Alaskan Crochet Cruise for June 2018. Cruisers please use squares that are 26 x 26 so they match.

Squares are 26 boxes wide by 26 boxes high. Approximately 20.5" x 20.5" without added border that is suggested in the blog article.



Using 5.5 mm or I crochet hook. Suggested yarn is Caron One Pound, Caron Simply Soft or equivalent. Suggested background should contrast the character.

Diagonal lines have been added to graph for easier to read and follow along. Please use all squares as seen in the graph including the squares with the row and column labels. Tilt the paper with the bottom right labeled #1 as the bottom of the paper. Mark each line as you complete.

C2C Tutorial on making characters is provided in blog write up. Crochet Cruisers are to add a border to their finished squares which is referred to in the blog article write up.

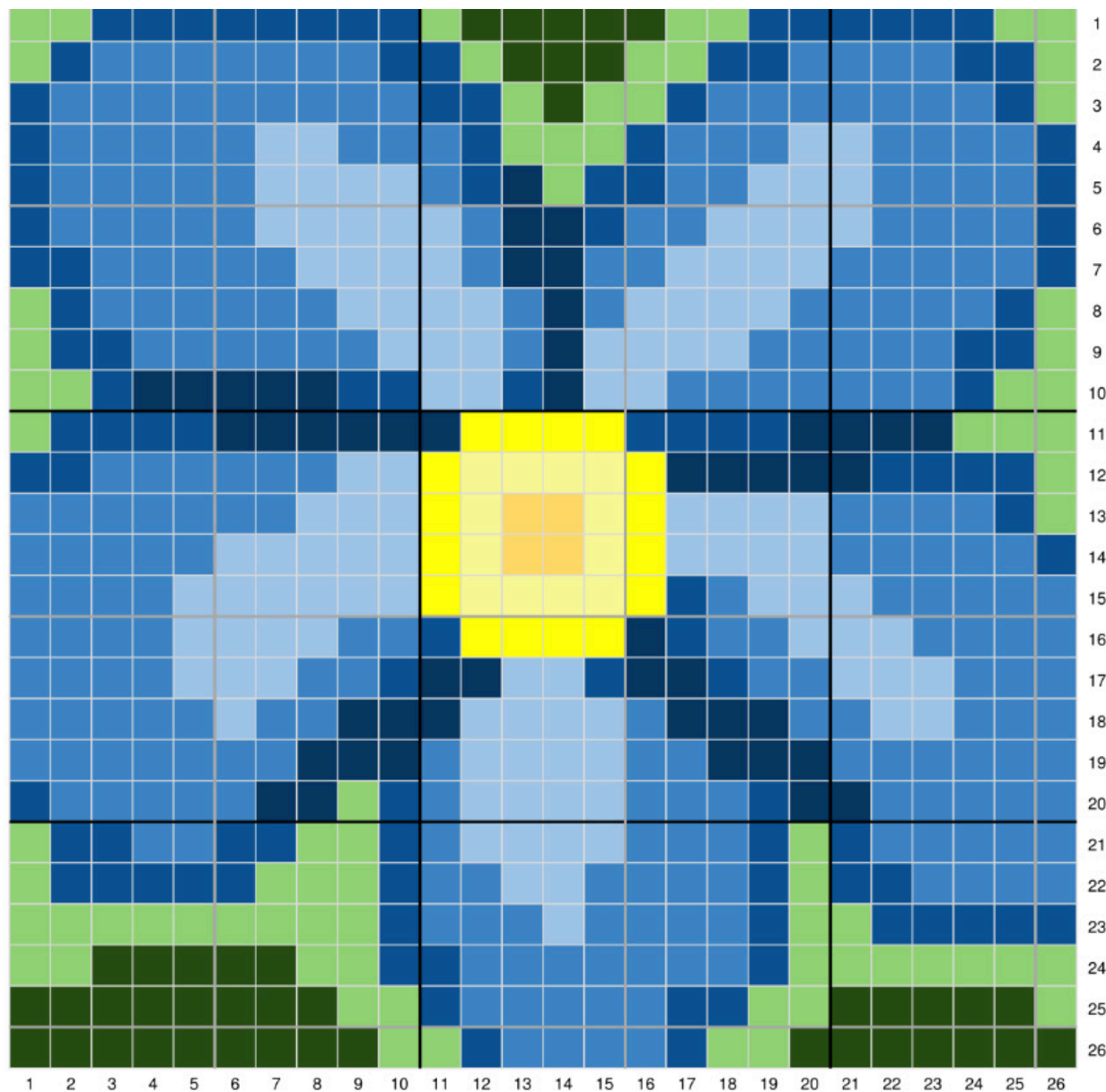
Alaskan Frontier C2C Pictorial Squares

Forget Me Not Flower - Designed by Amy J Floyd



Designed for Project Linus Charity Squares for the Alaskan Crochet Cruise for June 2018. Cruisers please use squares that are 26 x 26 so they match.

Squares are 26 boxes wide by 26 boxes high. Approximately 20.5" x 20.5" without added border that is suggested in the blog article.



Using 5.5 mm or I crochet hook. Suggested yarn is Caron One Pound, Caron Simply Soft or equivalent. Suggested background should contrast the character.

Diagonal lines have been added to graph for easier to read and follow along. Please use all squares as seen in the graph including the squares with the row and column labels. Tilt the paper with the bottom right labeled #1 as the bottom of the paper. Mark each line as you complete.

C2C Tutorial on making characters is provided in blog write up. Crochet Cruisers are to add a border to their finished squares which is referred to in the blog article write up.

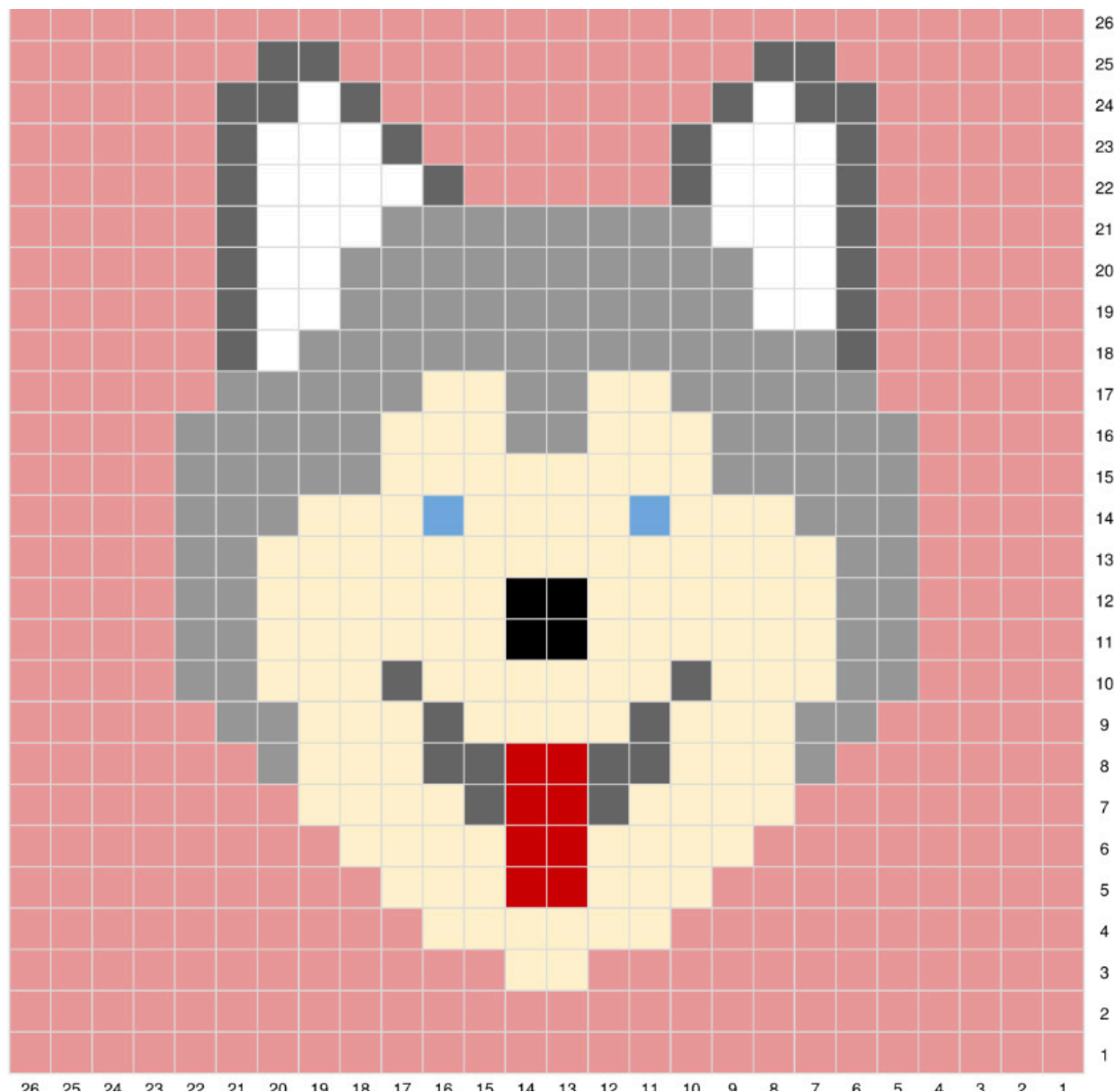
Alaskan Frontier C2C Pictorial Squares

Husky - Designed by Debbie Hurst Schisler



Designed for Project Linus Charity Squares for the Alaskan Crochet Cruise for June 2018. Cruisers please use squares that are 26 x 26 so they match.

Squares are 26 boxes wide by 26 boxes high. Approximately 20.5" x 20.5" without added border that is suggested in the blog article.



Using 5.5 mm or I crochet hook. Suggested yarn is Caron One Pound, Caron Simply Soft or equivalent. Suggested background should contrast the character.

Diagonal lines have been added to graph for easier to read and follow along. Please use all squares as seen in the graph including the squares with the row and column labels. Tilt the paper with the bottom right labeled #1 as the bottom of the paper. Mark each line as you complete.

C2C Tutorial on making characters is provided in blog write up. Crochet Cruisers are to add a border to their finished squares which is referred to in the blog article write up.

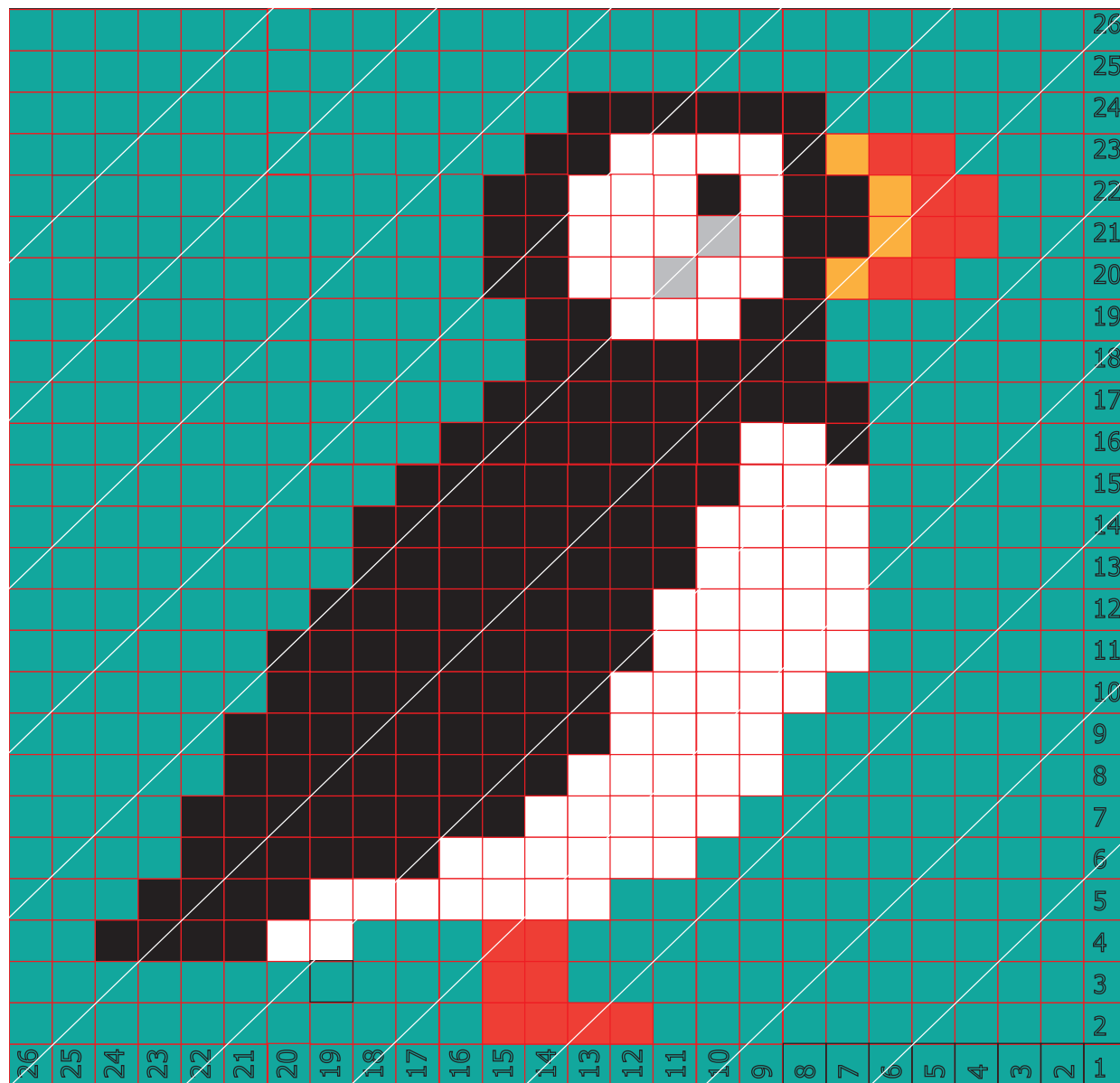
Alaskan Frontier C2C Pictorial Squares

Puffin - Designed by Daniel Zondervan



Designed for Project Linus Charity Squares for the Alaskan Crochet Cruise for June 2018. Cruisers please use squares that are 26 x 26 so they match.

Squares are 26 boxes wide by 26 boxes high. Approximately 20.5" x 20.5" without added border that is suggested in the blog article.



Using 5.5 mm or I crochet hook. Suggested yarn is Caron One Pound, Caron Simply Soft or equivalent. Suggested background should contrast the character.

Diagonal lines have been added to graph for easier to read and follow along. Please use all squares as seen in the graph including the squares with the row and column labels. Tilt the paper with the bottom right labeled #1 as the bottom of the paper. Mark each line as you complete.

C2C Tutorial on making characters is provided in blog write up. Crochet Cruisers are to add a border to their finished squares which is referred to in the blog article write up.

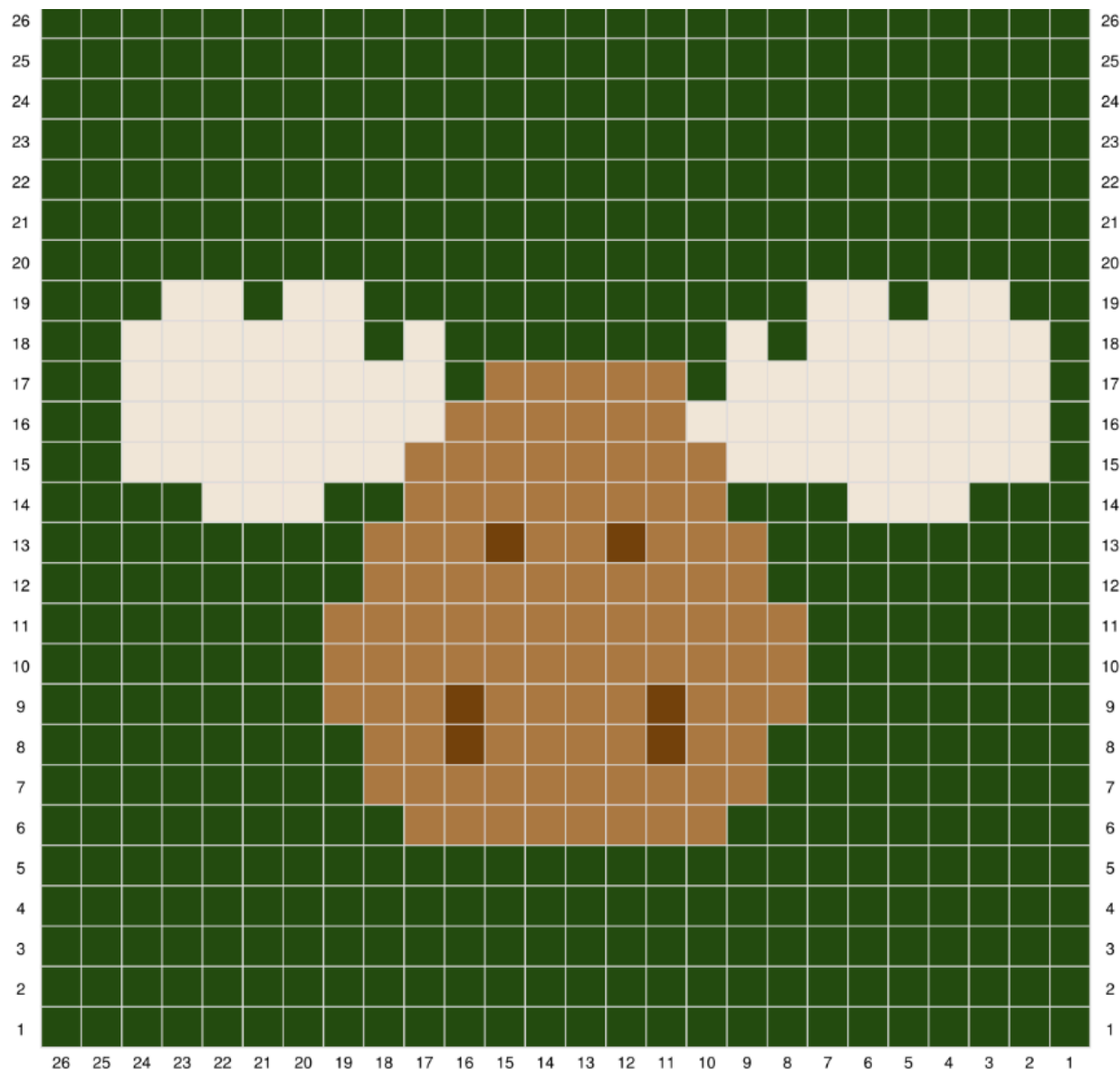
Alaskan Frontier C2C Pictorial Squares

Moose - Designed by Shannon Zantello



Designed for Project Linus Charity Squares for the Alaskan Crochet Cruise for June 2018. Cruisers please use squares that are 26 x 26 so they match.

Squares are 26 boxes wide by 26 boxes high. Approximately 20.5" x 20.5" without added border that is suggested in the blog article.



Using 5.5 mm or I crochet hook. Suggested yarn is Caron One Pound, Caron Simply Soft or equivalent. Suggested background should contrast the character.

Diagonal lines have been added to graph for easier to read and follow along. Please use all squares as seen in the graph including the squares with the row and column labels. Tilt the paper with the bottom right labeled #1 as the bottom of the paper. Mark each line as you complete.

C2C Tutorial on making characters is provided in blog write up. Crochet Cruisers are to add a border to their finished squares which is referred to in the blog article write up.

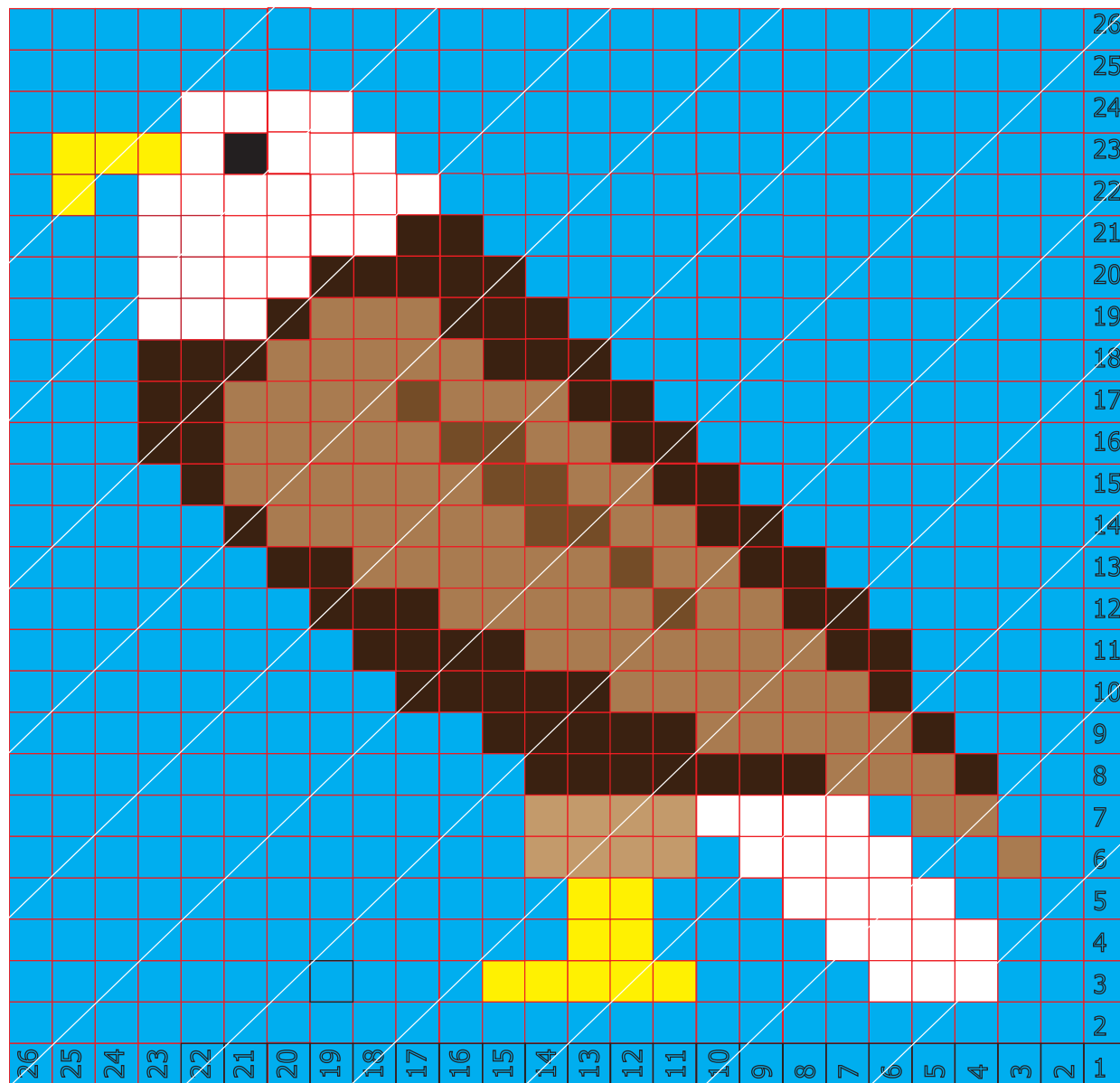
Alaskan Frontier C2C Pictorial Squares

Eagle - Designed by Daniel Zondervan



Designed for Project Linus Charity Squares for the Alaskan Crochet Cruise for June 2018. Cruisers please use squares that are 26 x 26 so they match.

Squares are 26 boxes wide by 26 boxes high. Approximately 20.5" x 20.5" without added border that is suggested in the blog article.



Using 5.5 mm or I crochet hook. Suggested yarn is Caron One Pound, Caron Simply Soft or equivalent. Suggested background should contrast the character.

Diagonal lines have been added to graph for easier to read and follow along. Please use all squares as seen in the graph including the squares with the row and column labels. Tilt the paper with the bottom right labeled #1 as the bottom of the paper. Mark each line as you complete.

C2C Tutorial on making characters is provided in blog write up. Crochet Cruisers are to add a border to their finished squares which is referred to in the blog article write up.

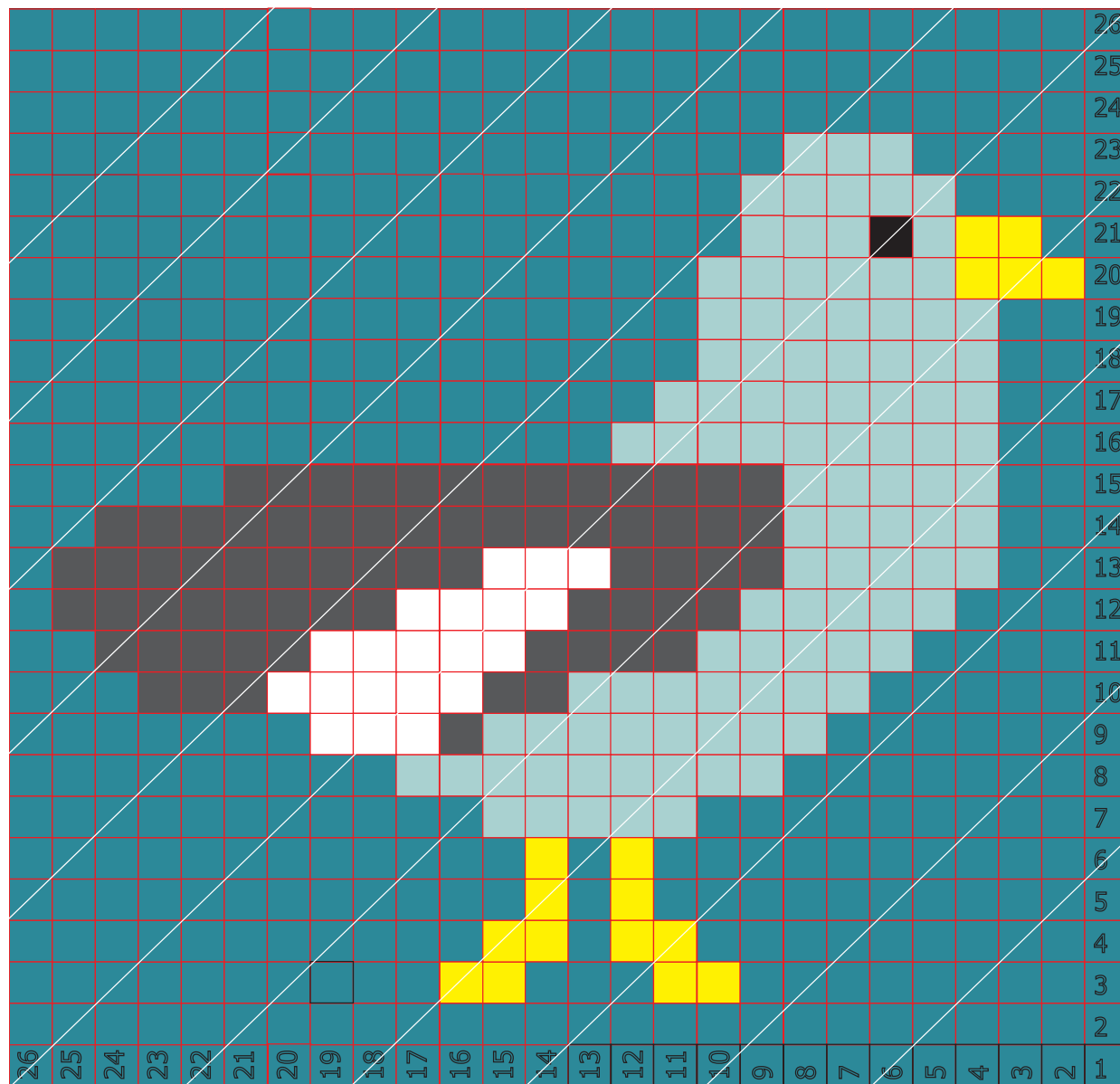
Alaskan Frontier C2C Pictorial Squares

Seagull - Designed by Daniel Zondervan



Designed for Project Linus Charity Squares for the Alaskan Crochet Cruise for June 2018. Cruisers please use squares that are 26 x 26 so they match.

Squares are 26 boxes wide by 26 boxes high. Approximately 20.5" x 20.5" without added border that is suggested in the blog article.



Using 5.5 mm or I crochet hook. Suggested yarn is Caron One Pound, Caron Simply Soft or equivalent. Suggested background should contrast the character.

Diagonal lines have been added to graph for easier to read and follow along. Please use all squares as seen in the graph including the squares with the row and column labels. Tilt the paper with the bottom right labeled #1 as the bottom of the paper. Mark each line as you complete.

C2C Tutorial on making characters is provided in blog write up. Crochet Cruisers are to add a border to their finished squares which is referred to in the blog article write up.

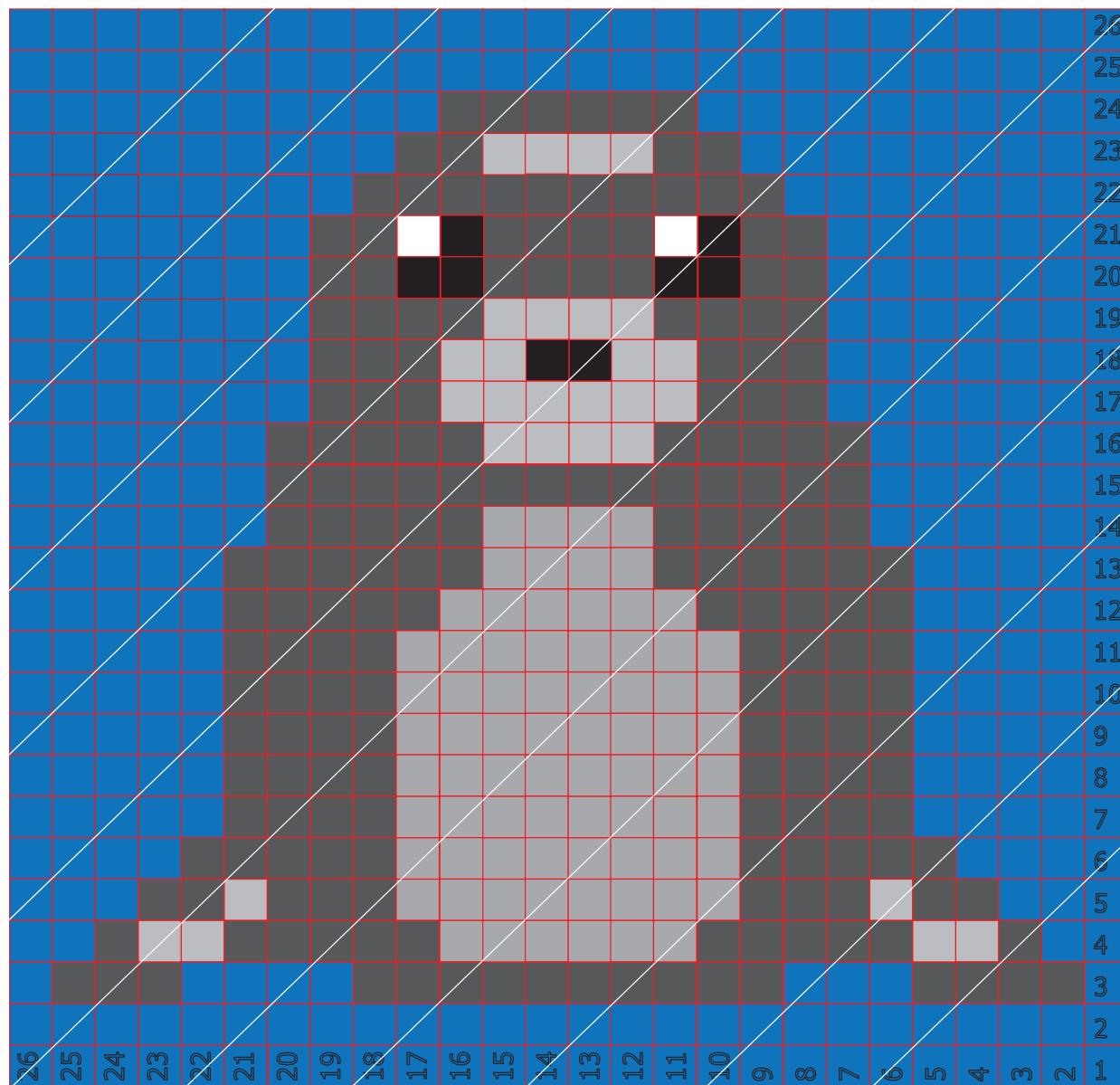
Alaskan Frontier C2C Pictorial Squares

Seal - Designed by Daniel Zondervan



Designed for Project Linus Charity Squares for the Alaskan Crochet Cruise for June 2018. Cruisers please use squares that are 26 x 26 so they match.

Squares are 26 boxes wide by 26 boxes high. Approximately 20.5" x 20.5" without added border that is suggested in the blog article.



Using 5.5 mm or I crochet hook. Suggested yarn is Caron One Pound, Caron Simply Soft or equivalent. Suggested background should contrast the character.

Diagonal lines have been added to graph for easier to read and follow along. Please use all squares as seen in the graph including the squares with the row and column labels. Tilt the paper with the bottom right labeled #1 as the bottom of the paper. Mark each line as you complete.

C2C Tutorial on making characters is provided in blog write up. Crochet Cruisers are to add a border to their finished squares which is referred to in the blog article write up.

Evergreen - Designed by Daniel Zondervan



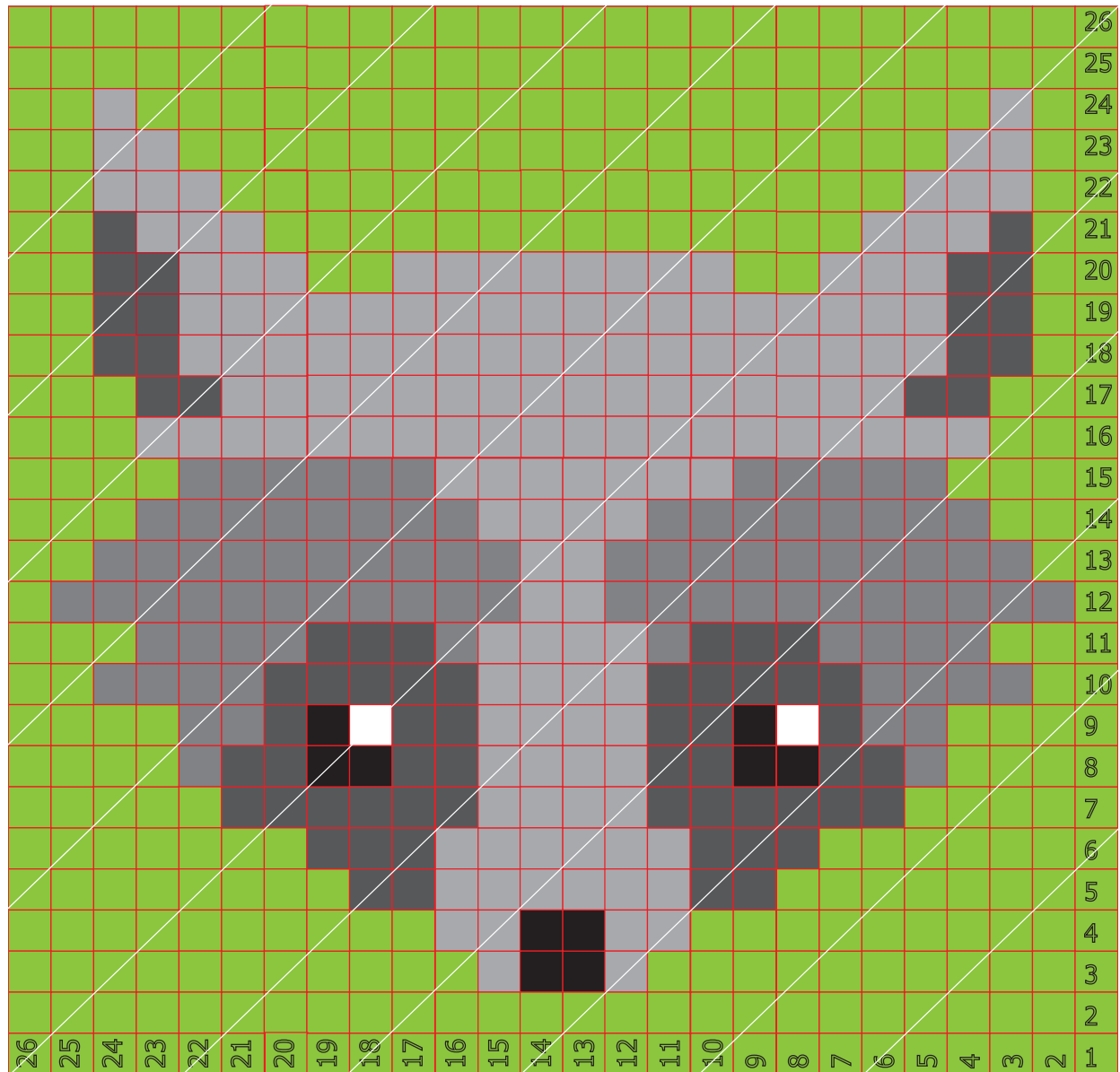
Alaskan Frontier C2C Pictorial Squares

Seal - Designed by Daniel Zondervan



Designed for Project Linus Charity Squares for the Alaskan Crochet Cruise for June 2018. Cruisers please use squares that are 26 x 26 so they match.

Squares are 26 boxes wide by 26 boxes high. Approximately 20.5" x 20.5" without added border that is suggested in the blog article.



Using 5.5 mm or I crochet hook. Suggested yarn is Caron One Pound, Caron Simply Soft or equivalent. Suggested background should contrast the character.

Diagonal lines have been added to graph for easier to read and follow along. Please use all squares as seen in the graph including the squares with the row and column labels. Tilt the paper with the bottom right labeled #1 as the bottom of the paper. Mark each line as you complete.

C2C Tutorial on making characters is provided in blog write up. Crochet Cruisers are to add a border to their finished squares which is referred to in the blog article write up.

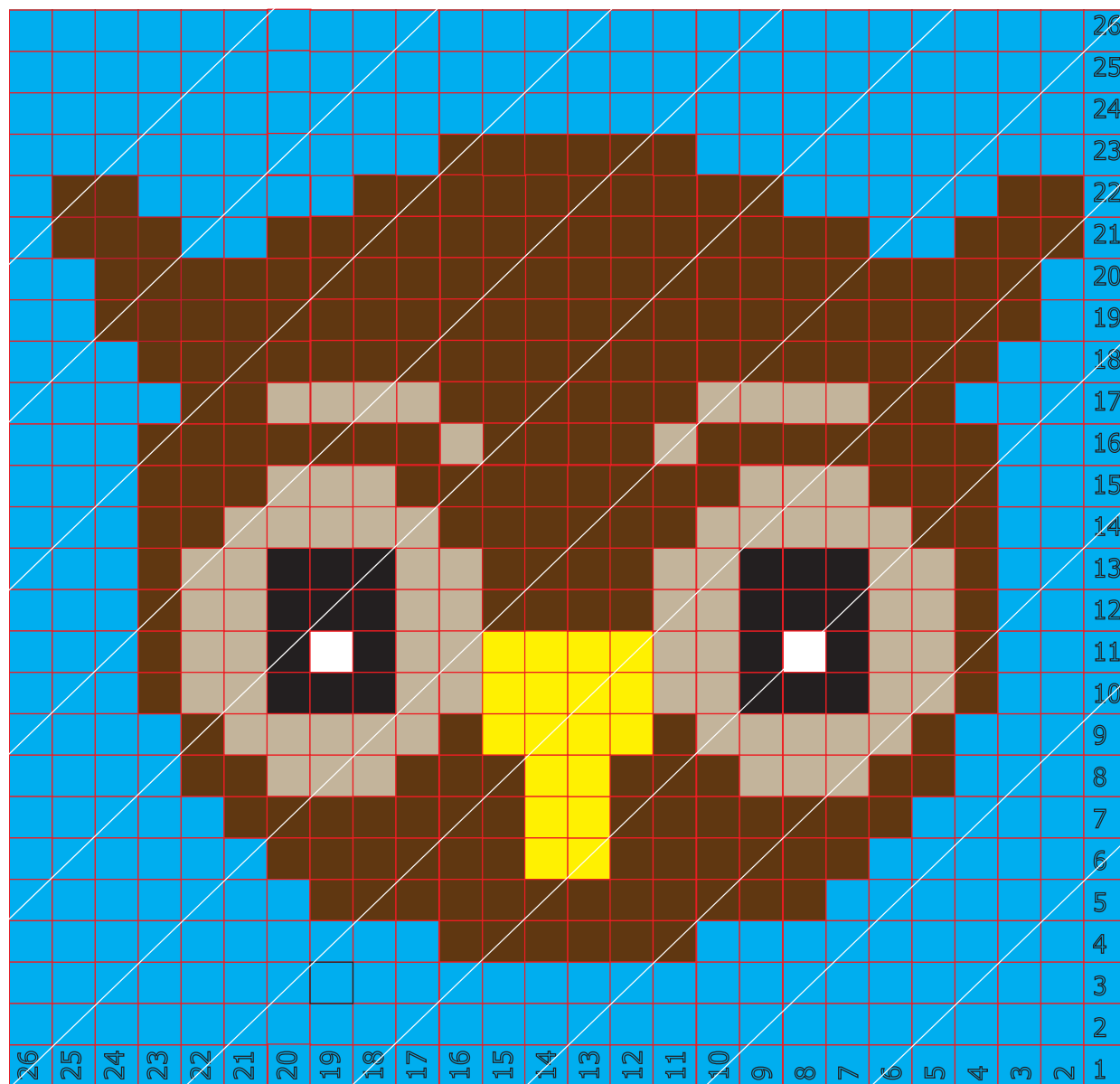
Alaskan Frontier C2C Pictorial Squares

Owl - Designed by Daniel Zondervan



Designed for Project Linus Charity Squares for the Alaskan Crochet Cruise for June 2018. Cruisers please use squares that are 26 x 26 so they match.

Squares are 26 boxes wide by 26 boxes high. Approximately 20.5" x 20.5" without added border that is suggested in the blog article.



Using 5.5 mm or I crochet hook. Suggested yarn is Caron One Pound, Caron Simply Soft or equivalent. Suggested background should contrast the character.

Diagonal lines have been added to graph for easier to read and follow along. Please use all squares as seen in the graph including the squares with the row and column labels. Tilt the paper with the bottom right labeled #1 as the bottom of the paper. Mark each line as you complete.

C2C Tutorial on making characters is provided in blog write up. Crochet Cruisers are to add a border to their finished squares which is referred to in the blog article write up.

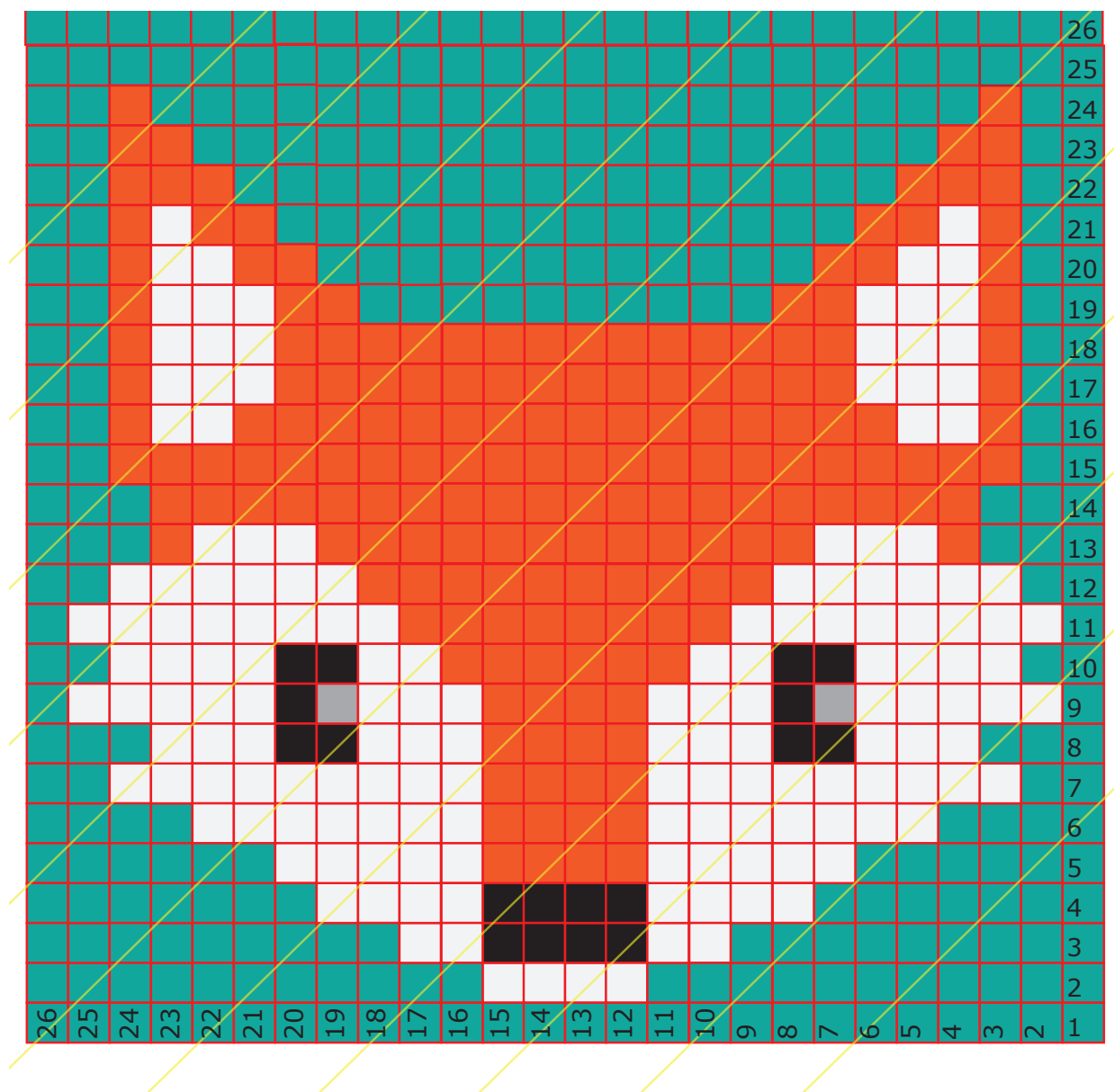
Alaskan Frontier C2C Pictorial Squares

Fox - Designed by Daniel Zondervan



Designed for Project Linus Charity Squares for the Alaskan Crochet Cruise for June 2018. Cruisers please use squares that are 26 x 26 so they match.

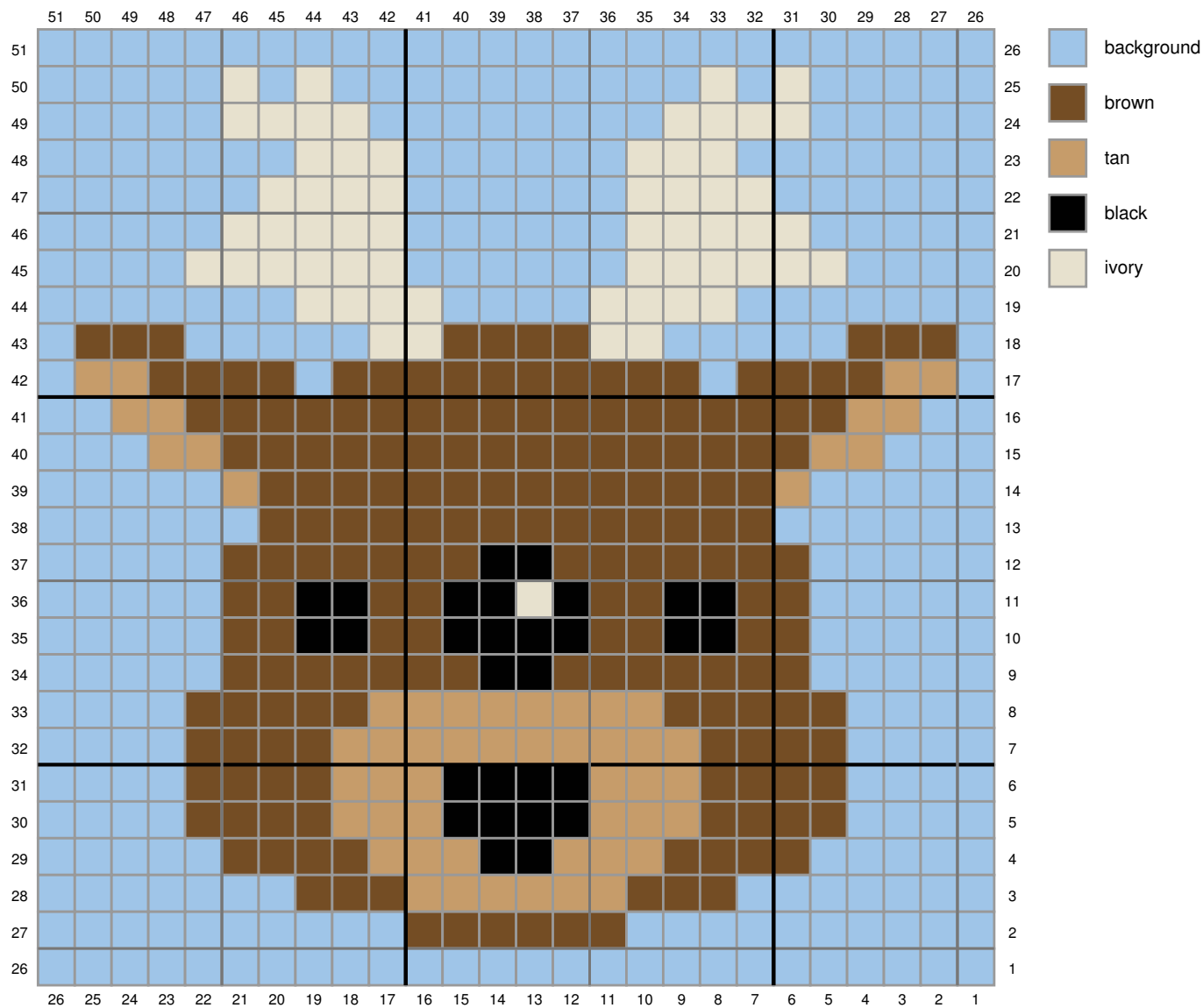
Squares are 26 boxes wide by 26 boxes high. Approximately 20.5" x 20.5" without added border that is suggested in the blog article.



Using 5.5 mm or I crochet hook. Suggested yarn is Caron One Pound, Caron Simply Soft or equivalent. Suggested background should contrast the character.

Diagonal lines have been added to graph for easier to read and follow along. Please use all squares as seen in the graph including the squares with the row and column labels. Tilt the paper with the bottom right labeled #1 as the bottom of the paper. Mark each line as you complete.

C2C Tutorial on making characters is provided in blog write up. Crochet Cruisers are to add a border to their finished squares which is referred to in the blog article write up.



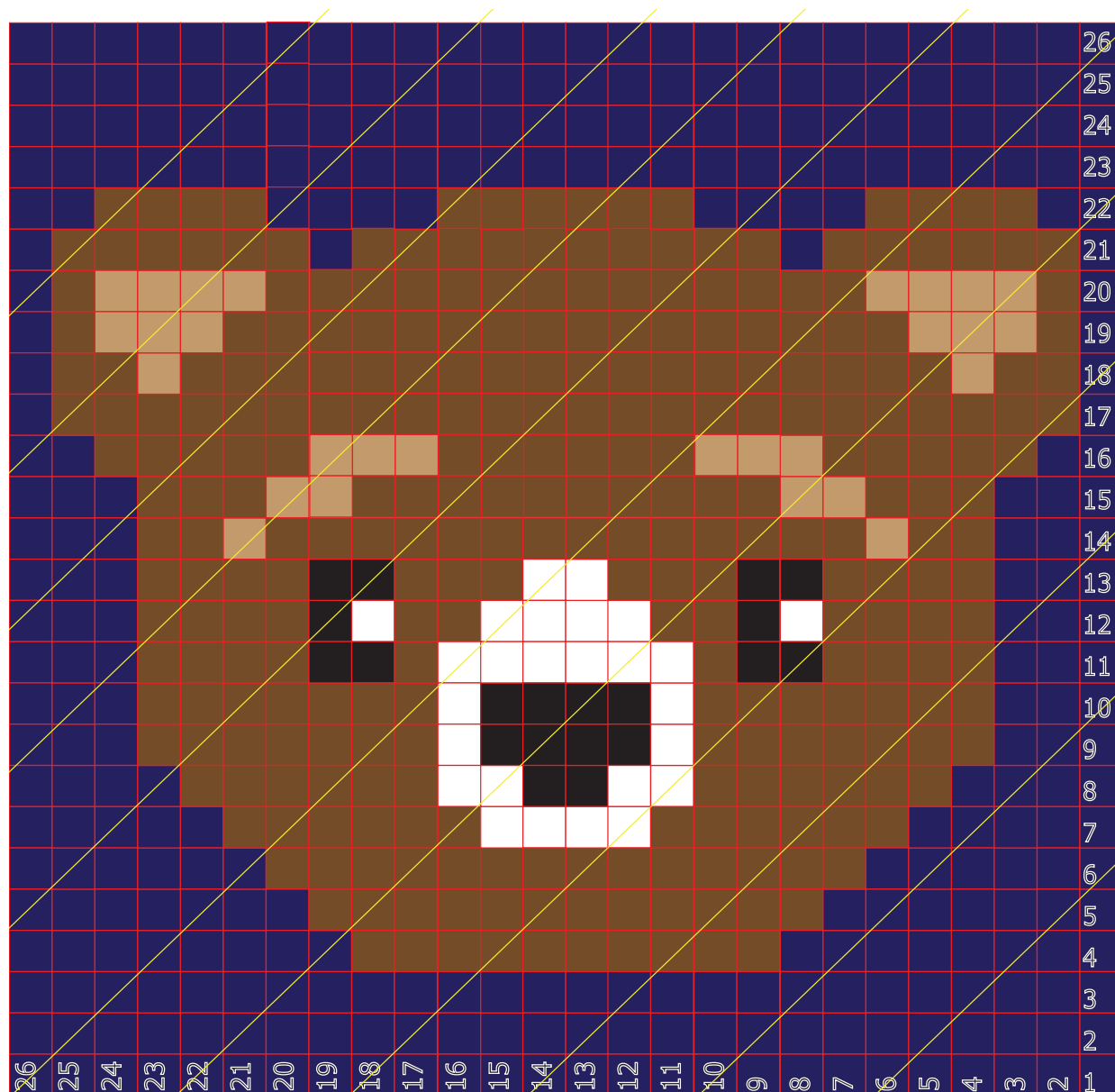
Alaskan Frontier C2C Pictorial Squares

Beary Cute - Designed by Daniel Zondervan



Designed for Project Linus Charity Squares for the Alaskan Crochet Cruise for June 2018. Cruisers please use squares that are 26 x 26 so they match.

Squares are 26 boxes wide by 26 boxes high. Approximately 20.5" x 20.5" without added border that is suggested in the blog article.



Using 5.5 mm or I crochet hook. Suggested yarn is Caron One Pound, Caron Simply Soft or equivalent. Suggested background should contrast the character.

Diagonal lines have been added to graph for easier to read and follow along. Please use all squares as seen in the graph including the squares with the row and column labels. Tilt the paper with the bottom right labeled #1 as the bottom of the paper. Mark each line as you complete.

C2C Tutorial on making characters is provided in blog write up. Crochet Cruisers are to add a border to their finished squares which is referred to in the blog article write up.

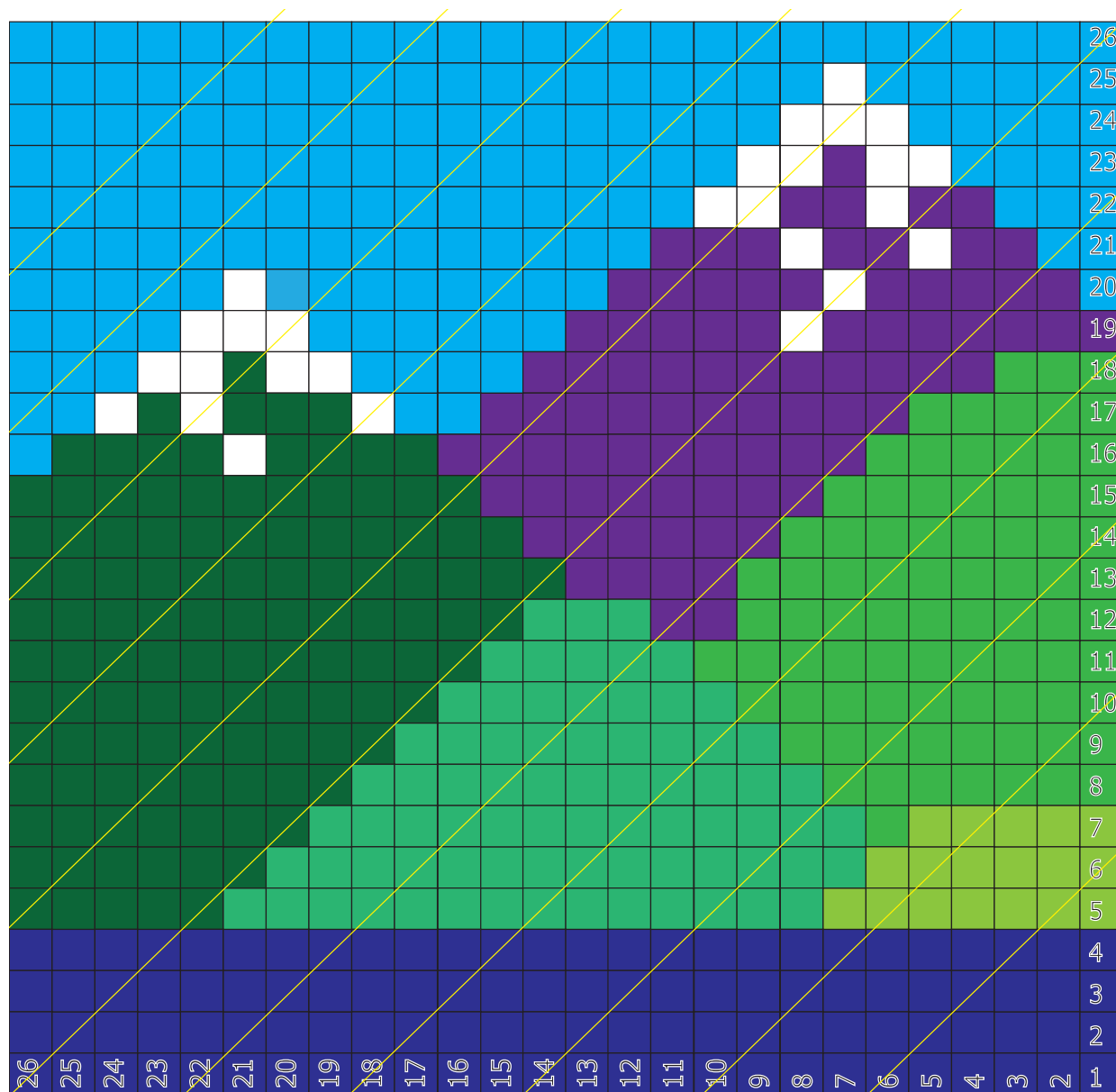
Alaskan Frontier C2C Pictorial Squares

Mountains - Designed by Daniel Zondervan



Designed for Project Linus Charity Squares for the Alaskan Crochet Cruise for June 2018. Cruisers please use squares that are 26 x 26 so they match.

Squares are 26 boxes wide by 26 boxes high. Approximately 20.5" x 20.5" without added border that is suggested in the blog article.



Using 5.5 mm or I crochet hook. Suggested yarn is Caron One Pound, Caron Simply Soft or equivalent. Suggested background should contrast the character.

Diagonal lines have been added to graph for easier to read and follow along. Please use all squares as seen in the graph including the squares with the row and column labels. Tilt the paper with the bottom right labeled #1 as the bottom of the paper. Mark each line as you complete.

C2C Tutorial on making characters is provided in blog write up. Crochet Cruisers are to add a border to their finished squares which is referred to in the blog article write up.

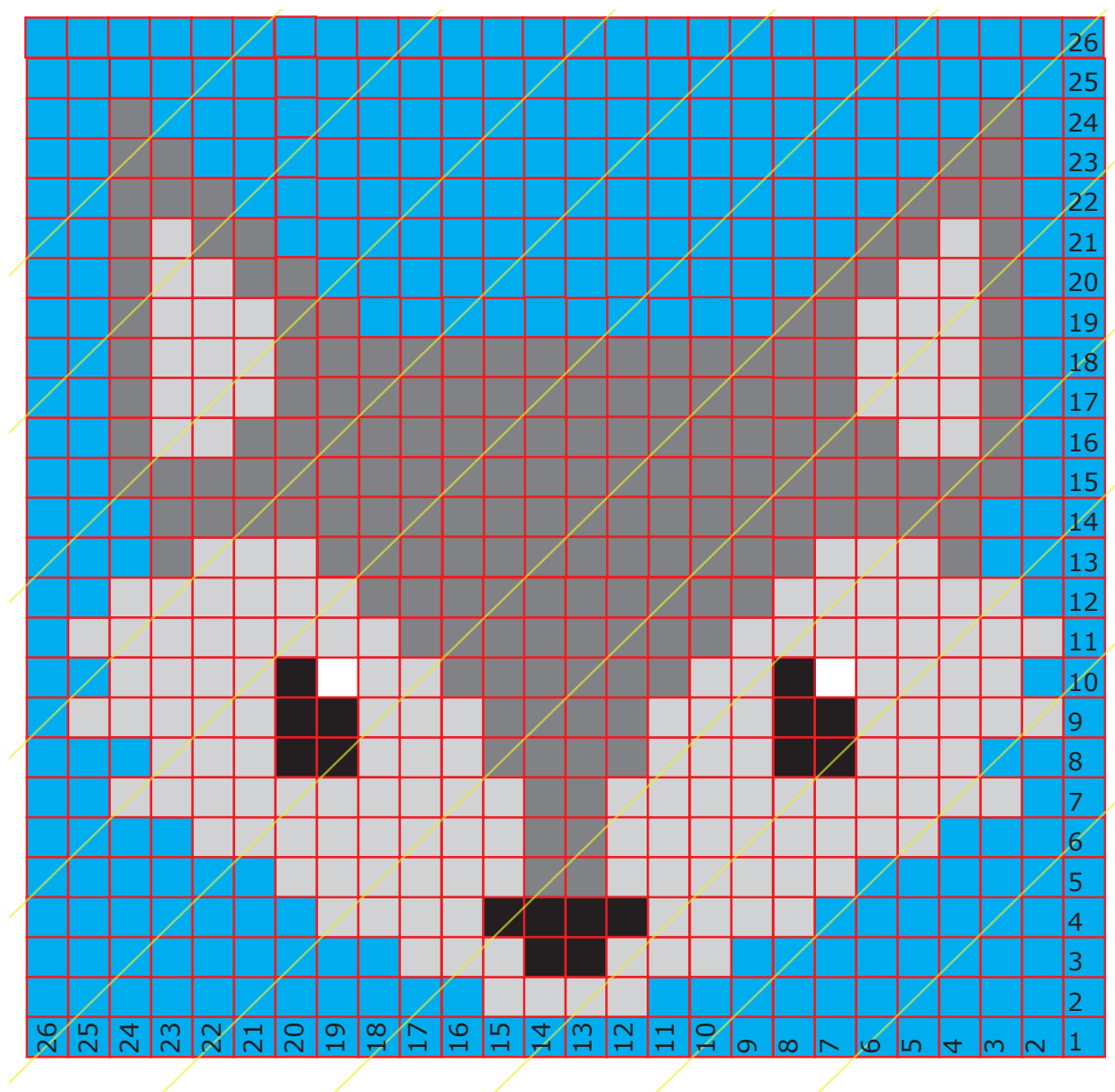
Alaskan Frontier C2C Pictorial Squares

Wolf - Designed by Daniel Zondervan



Designed for Project Linus Charity Squares for the Alaskan Crochet Cruise for June 2018. Cruisers please use squares that are 26 x 26 so they match.

Squares are 26 boxes wide by 26 boxes high. Approximately 20.5" x 20.5" without added border that is suggested in the blog article.



Using 5.5 mm or I crochet hook. Suggested yarn is Caron One Pound, Caron Simply Soft or equivalent. Suggested background should contrast the character.

Diagonal lines have been added to graph for easier to read and follow along. Please use all squares as seen in the graph including the squares with the row and column labels. Tilt the paper with the bottom right labeled #1 as the bottom of the paper. Mark each line as you complete.

C2C Tutorial on making characters is provided in blog write up. Crochet Cruisers are to add a border to their finished squares which is referred to in the blog article write up.

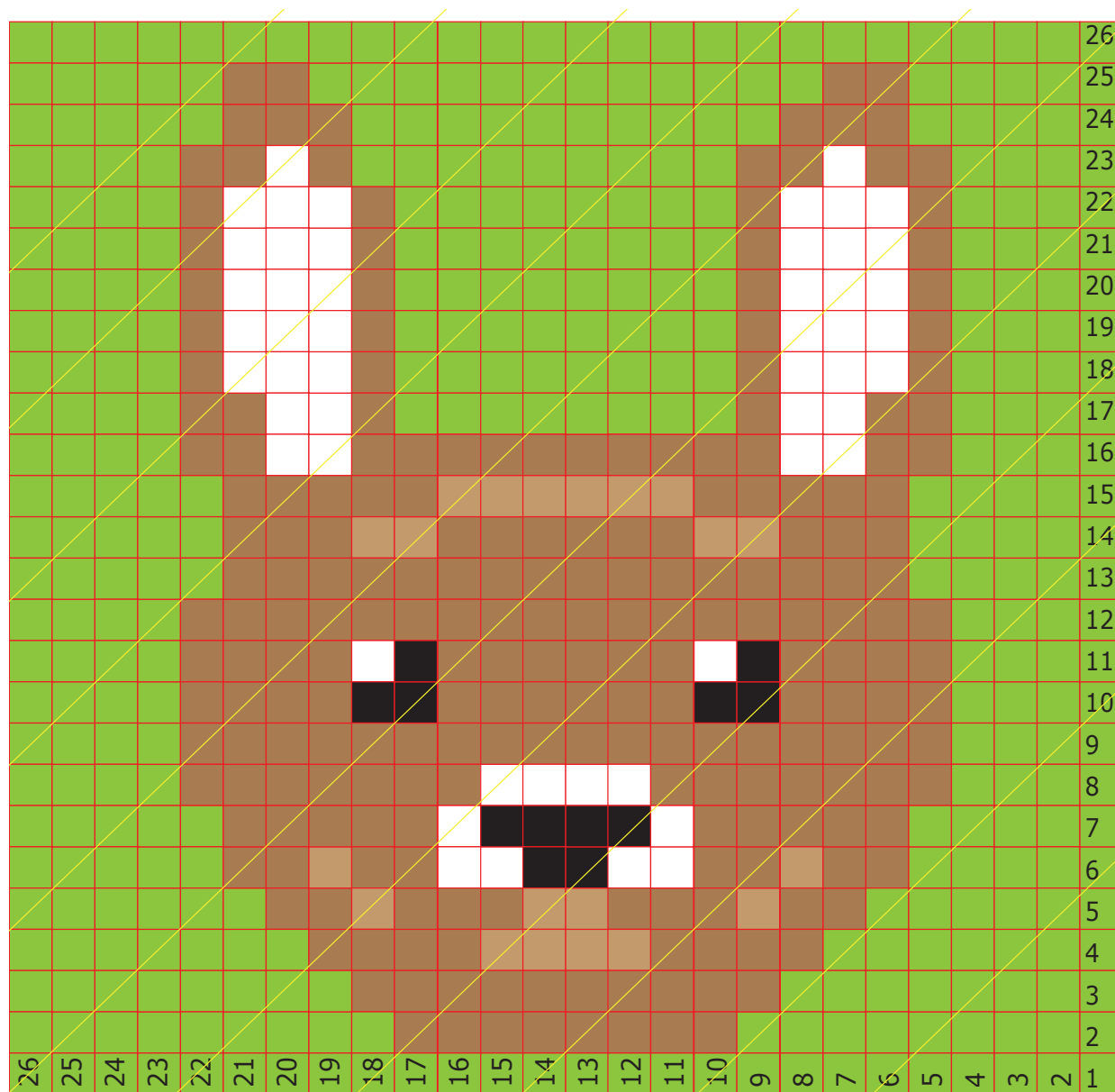
Alaskan Frontier C2C Pictorial Squares

Bunny - Designed by Daniel Zondervan



Designed for Project Linus Charity Squares for the Alaskan Crochet Cruise for June 2018. Cruisers please use squares that are 26 x 26 so they match.

Squares are 26 boxes wide by 26 boxes high. Approximately 20.5" x 20.5" without added border that is suggested in the blog article.



Using 5.5 mm or I crochet hook. Suggested yarn is Caron One Pound, Caron Simply Soft or equivalent. Suggested background should contrast the character.

Diagonal lines have been added to graph for easier to read and follow along. Please use all squares as seen in the graph including the squares with the row and column labels. Tilt the paper with the bottom right labeled #1 as the bottom of the paper. Mark each line as you complete.

C2C Tutorial on making characters is provided in blog write up. Crochet Cruisers are to add a border to their finished squares which is referred to in the blog article write up.



MATERIALS

Caron® Cakes™ (7.1 oz/200 g; 383 yds/350 m)

Banana Bread (17042)

2 balls

Size U.S. H/8 (5 mm) crochet hook **or size needed to obtain gauge.**

ABBREVIATIONS

Approx =

Approximately

Beg = Begin(ning)

Ch = Chain(s)

Cont = Continue(ity)

Dc = Double crochet

Inc = Increase(ing)

Pat = Pattern

Rem = Remaining

Rep = Repeat

RS = Right side

Sc = Single crochet

Sl St = Slip stitch

Sp = Space(s)

St(s) = Stitch(es)

WS = Wrong side



CROCHET | SKILL LEVEL: **EASY**

MEASUREMENTS

Approx. 8" x 61" [20.5 x 155 cm]

GAUGE

13 sc and 14 rows = 4" [10 cm]

INSTRUCTIONS

Ch 6.

1st row: (RS). 1 dc in 4th ch from hook. 1 dc in each of next 2 ch. Turn. – 1 block made.

2nd row: Ch 6. 1 dc in 4th ch from hook. 1 dc in each of next 2 ch – beg block made. (Sl st. Ch 3. 3 dc) in next ch-3 sp – block made. Turn. – 2 blocks.

3rd row: Beg block. (Block in next ch-3 sp) twice. Turn. – 3 blocks.

4th row: Beg block. (Block in next ch-3 sp) 3 times. Turn. – 4 blocks.

5th row: Beg block. (Block in next ch-3 sp) 4 times. Turn. – 5 blocks.

6th row: Beg block. (Block in next ch-3 sp) 5 times. Turn. – 6 blocks.

7th row: Beg block. (Block in next ch-3 sp) 6 times. Turn. – 7 blocks. Cont in this manner, inc 1 block each row until there are 12 blocks (12 rows are complete).

Work sides even as follows:

1st row: (RS). Beg block. (Block in next ch-3 sp) 11 times. Sl st in last ch-3 sp (do not make a block). Turn. – 12 blocks.

2nd row: Sl st in each of first 3 dc and next ch-3 sp. Block in same ch-3 sp as last sl st. (Block in next ch-3 sp) 11 times. Turn. – 12 blocks.

Rep last 2 rows until work from straight lower edge measures 61" [155 cm], ending on a WS row.

Beg decreasing each side as follows:

1st row: (RS). Sl st in each of first 3 dc and next ch-3 sp. Block in same ch-3 sp as last sl st. *Block in next ch-3 sp. Rep from * to last ch-3 sp. Sl st in last ch-3 sp (do not make a block). Turn.

Rep last row until 1 block rem. Fasten off.

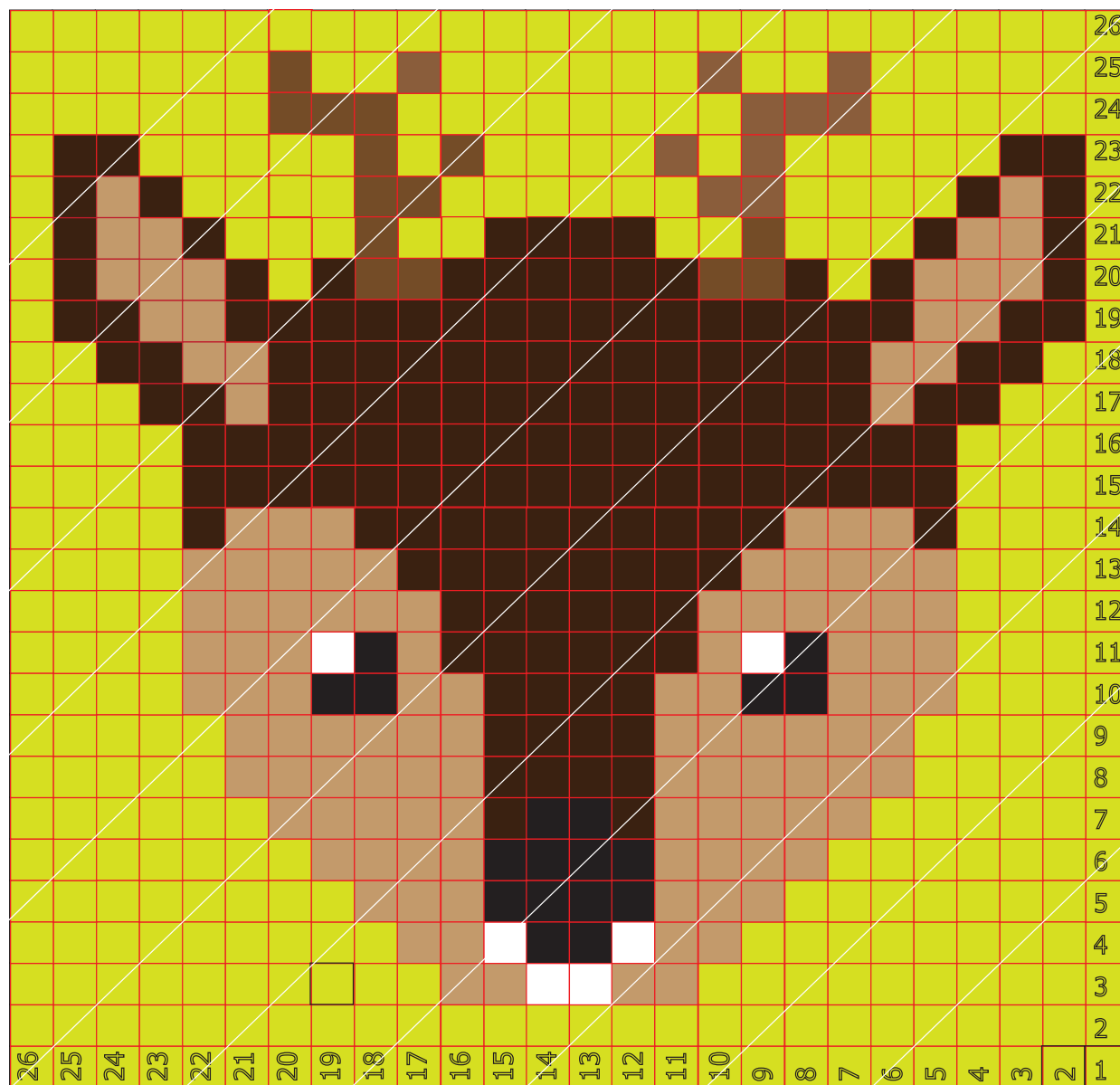
Alaskan Frontier C2C Pictorial Squares

Oh Deer- Designed by Daniel Zondervan



Designed for Project Linus Charity Squares for the Alaskan Crochet Cruise for June 2018. Cruisers please use squares that are 26 x 26 so they match.

Squares are 26 boxes wide by 26 boxes high. Approximately 20.5" x 20.5" without added border that is suggested in the blog article.



Using 5.5 mm or I crochet hook. Suggested yarn is Caron One Pound, Caron Simply Soft or equivalent. Suggested background should contrast the character.

Diagonal lines have been added to graph for easier to read and follow along. Please use all squares as seen in the graph including the squares with the row and column labels. Tilt the paper with the bottom right labeled #1 as the bottom of the paper. Mark each line as you complete.

C2C Tutorial on making characters is provided in blog write up. Crochet Cruisers are to add a border to their finished squares which is referred to in the blog article write up.

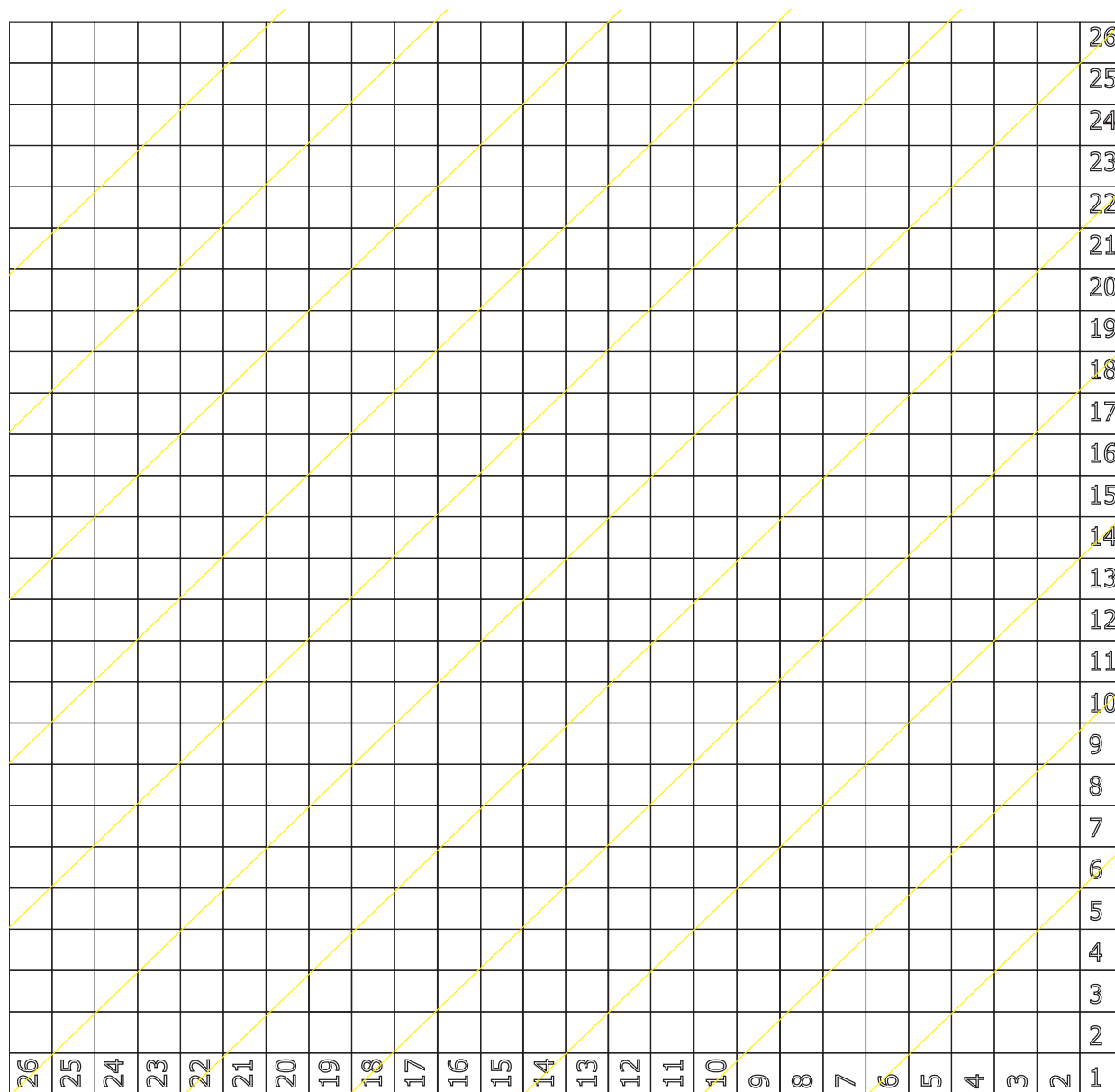
Alaskan Frontier C2C Pictorial Squares

Design Your Own - Designed by Daniel Zondervan



Designed for Project Linus Charity Squares for the Alaskan Crochet Cruise for June 2018. Cruisers please use squares that are 26 x 26 so they match.

Squares are 26 boxes wide by 26 boxes high. Approximately 20.5" x 20.5" without added border that is suggested in the blog article.



Using 5.5 mm or I crochet hook. Suggested yarn is Caron One Pound, Caron Simply Soft or equivalent. Suggested background should contrast the character.

Diagonal lines have been added to graph for easier to read and follow along. Please use all squares as seen in the graph including the squares with the row and column labels. Tilt the paper with the bottom right labeled #1 as the bottom of the paper. Mark each line as you complete.

C2C Tutorial on making characters is provided in blog write up. Crochet Cruisers are to add a border to their finished squares which is referred to in the blog article write up.



Corner to Corner C2C Squares

Easy

Caron Cakes: Colour is Cherry
Chip.

Hook

5.5 mm or I Hook

Abbreviations

Beg = Begin
Ch = Chain
Rep = Repeat
Sl St = Slip Stitch
Sp = Space

Easy to Crochet

Using Caron Cakes or equivalent yarn. Main C2C Square without border takes 227 yards. Just about 60% of Caron Cakes Ball or Bernat POP! Ball.

With borders, 22" 22".

Instructions

Ch 6

1st row: (RS). 1 dc in 4th ch from hook. 1 dc in each of next 2

ch. Turn – 1 block made.

2nd row: Ch 6. 1 dc in 4th ch from hook. 1 dc in each of next 2 ch – beg block made. (Sl st. Ch 3. 3 dc) in next ch-3 sp – block made. Turn – 2 blocks.

3rd row: Beg block. (Block in next ch-3 sp) twice. Turn – 3 blocks.

4th row: Beg block. (Block in next ch-3 sp) 3 times. Turn – 4 blocks.

5th row: Beg block. (Block in next ch-3 sp) 4 times. Turn – 5 blocks.

6th row: Beg block. (Block in next ch-3 sp) 5 times. Turn – 6 blocks.

7th row: Beg block. (Block in next ch-3 sp) 6 times. Turn – 7 blocks.

Cont in this manner, inc 1 block each row until there are 26 blocks (26 rows are complete).

Beg decreasing each side as follows:

1st row: (RS). Sl st in each of first 3 dc

and next ch-3 sp. Block in same ch-3 sp as last sl st. *Block in next ch-3 sp. Rep from * to last ch-3 sp. Sl st in last ch-3 sp (do not make a block). Turn.

Rep last row until 1 block remains. Fasten off.

Border

Rnd 1: Fasten on to any corner of c2c square. Ch 1, sc in same sp, ch 2, sc in same space. Ch 2, sc in the space between each block. In corners, sc, ch 2 and sc. Continue around. Join with sl st to beg sc.

Rnd 2: Sl st to next ch-2 space. Ch 3 (counts as dc), 4 dc in same sp. Place 3 dc in each ch-2 space. In corners, place 5 dc. Continue around. Join to top of beg ch-3. Fasten off and weave in ends.



Mikey's Designs



Afghan