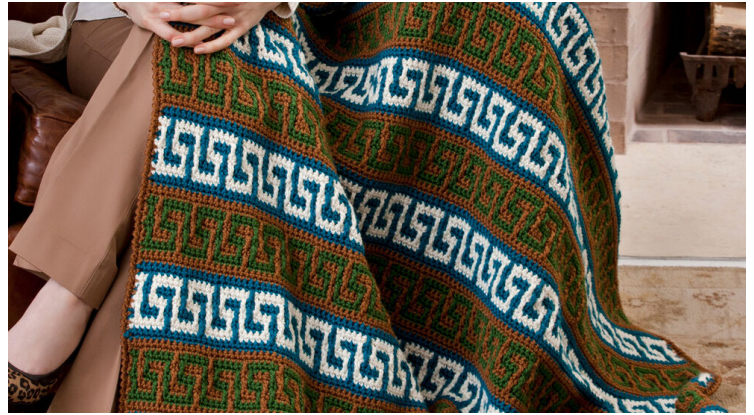


# Greek Key Mosaic Blanket

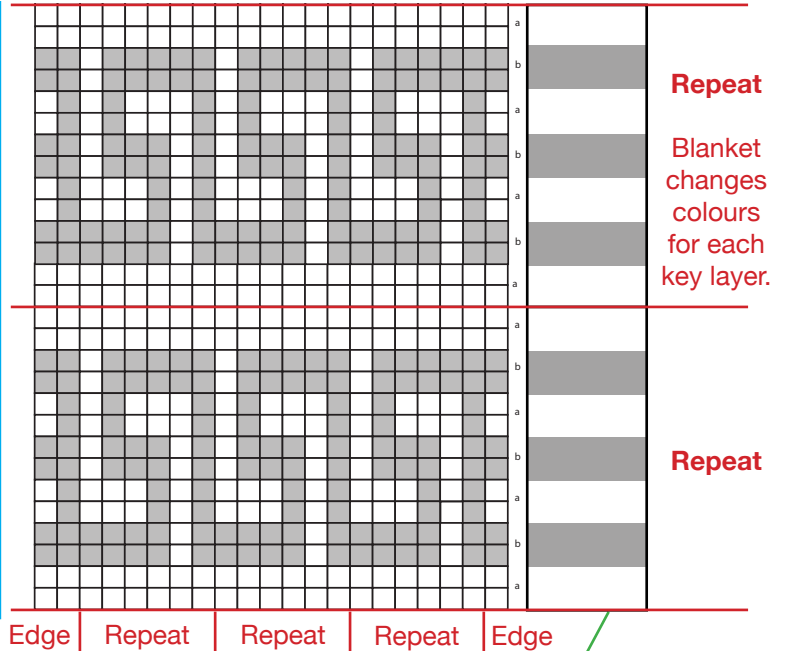
Mikey's Tutorial Worksheet

Multiples to make this wider are in multiples of 6 + 4. Carry colour up the side and then use border rounds to hide the carried colour.



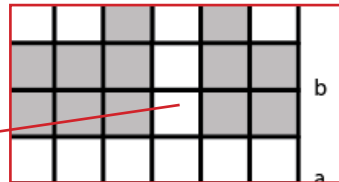
## Each square of chart represents 1 stitch.

- Right side rows (odd numbered rows) are read from right to left. Wrong side rows (even numbered rows) are read from left to right.
- Each row is worked in one color only. First stitch of chart indicates the color to be used in that row.
- When a contrast color appears (eg: white square in a gray row) work as "ch-2. Skip next st".
- On right side rows when a ch-2 sp appears, work Mosaic dc into skipped st 3 rows below.



## See how the white box goes down into the gray area?

That means the gray area should be chain 2 space, skipping over 1 stitch to make room for when the white colour needs to be a double crochet to lay in front to create the mosaic shape.



## These are the main colour used for the 2 rows.

Each mosaic span consists of 2 rows.

Crochet across and then back before changing colour to the next. Carry yarn up side.