



# BONDI BEACH

**Size:** to fit size 50 – 54 cm/19 ¾" - 21 ¼" head circumference.

**If you'd like to make this hat, you will need the following materials:**

Approx. 150 g (3 balls) of **Schachenmayr original Catania Grande** in col 03207 Lagoon. Size 4.5 mm and 5 mm (US 7 and H/8) crochet hook. Tapestry needle.

**These are the crochet stitches you will need to make this hat:**

**Chain:** Ch.

**Slip Stitch:** Sl St.

**Single Crochet:** Sc.

**Double Crochet:** Dc .

**Back Post Single Crochet:** BPsc.

Insert hook from back to front to back around post of st from row below and pull up a loop, yo and draw through 2 loops on hook to complete sc. Beg each row with ch 1.

**Shell Pattern:** multiple of 5 sts.

Work in rnds according to chart. Beg chart pat with sts before pat rep, work pat repeat around, end with sts after pat rep. Beg rnds with ch 1 or ch 3 as indicated on chart, end rnds with a sl st in top chain.

**Note:** work dc on rnds 2 and 4 into chain spaces of previous rnd. Repeat rnds 1 – 4 throughout.

**Gauge:** 17 dc and 5.5 rnds = 10 x 10 cm/4 x 4" using larger hook.



**Let's get started!**

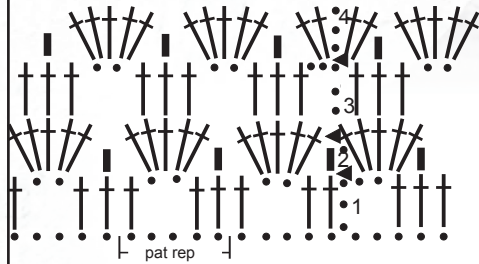
**Here are the instructions:**

**Brim:** With size 4.5 mm (US 7) crochet hook, ch 90 + 1 and work BPsc for 5 rows. At end of row 5, sl st to first ch to join in the rnd. Change to size 5 mm (US H/8) crochet hook and work in shell pat according to chart, working rnds 1 – 4 of chart 4 times = 16 rnds total.





### Chart for the Shell Pattern



### Zeichenerklärung:

- = ch
- ◀ = sl st
- = sc
- † = dc

Next, work decreases for crown of hat as fall:

**Dec rnd 1:** ch 3, 1 dc in next dc, \* ch 1, dc3tog with center 3 dc of previous rnd; rep from \*, end ch 1, sl st to top ch - 36 sts.

**Dec rnd 2:** ch 1, sc2tog around - 18 sts.

**Dec rnd 3:** work same as dec rnd 2 - 9 sts.

Cut yarn, fasten off, then thread yarn end through remaining 9 sts and pull tight. Weave in all ends on wrong side of work. Sew seam at brim.

**You've done it -  
your My Mountain hat is finished!**



# BONDI BEACH

