



Crochet Baby of Mine Blanket

By Michael Sellick, ©2021 The Crochet Crowd

Size: 32" x 36"
Hood Not Included

Hook: 5.5 mm / I

Yarn

Caron One Pound, 454g/16 oz, 742 m/812 yds

A - 2 Balls, Lilac

There is an option to just use 1 ball and make the main blanket smaller without a hood.

OPTION 1 - Baby Blanket

Baby blanket is 36" x 32". Uses 2 balls. If you want to use 1 ball only, you will have a 36" x 27" and follow the instructions below.

OPTION 2 - Blanket with Middle Side Hood

Baby blanket is 36" x 32". Hood is positioned in the middle that is 7.5" tall x 15" across the side. It is created as an extension and sewn at top to close the hood.

OPTION 3 - Blanket with Corner Hood

Baby blanket is 36" x 32". Hood is positioned in the corner. A triangle is made and sewn on. Triangle is 16" across span by 7.5" tall.

To change the size of the blanket:

Multiples of 2

Abbreviations

Approx = Approximate(ly)
Beg = Begin(ning)
Ch = Chain(s)
Rep = Repeat
RS = Right Side
Sc = Single Crochet
Scblo = Single Crochet Back Loop
Sl St = Slip Stitch
Sk = Skip
Tr = Treble
WS = Wrong Side

The stitch combo used is called the Faux Popcorn with trebles. Keep in mind for this to work, the trebles must be crocheted on the wrong side so they pop outward to the front of the project.

I provided relief with using single crochet back loops to create the textured lines. If you wanted to have colour options for stripes, change the colour of the yarn before starting a back loop row and run through the pattern until next back loop row.

Option 1 - Baby Blanket



Ch 110 or in Multiples of 2.

1st row: (RS) 1 sc 2nd ch from hook. 1 sc in each ch across. Turn. 109 sc.

2nd row: (WS) Ch 1, 1 sc in first st. *1 tr in next st, 1 sc in next st. Rep from * across. Turn. 109 sts.

3rd row: Ch 1, 1 sc in each st across. Turn. 109 sc.

4th - 7th rows: Rep 2nd and 3rd row.

8th row: Ch 1, 1 sc in each st across. Turn. 109 sc.

Crochet Baby of Mine Blanket

By Michael Sellick, ©2021 The Crochet Crowd

9th row: Ch 1, 1 scblo in each st across. Turn. 109 sts.

Option 1 - Baby blanket using 1 ball of yarn.

Repeat rows 2 - 9 (8 times more).
Then rows 2 - 7. Fasten off.

There is not enough yarn to make a hood with this option.

Option 2 - Size shown plus hood options, 2 Balls of Yarn.

Repeat rows 2 - 9 (10 times more).
Then rows 2 - 7. Fasten off.

Yarn from second ball can get this blanket to be longer and the crochet hood.

Blanket Border

Proceed directly to the border for the regular baby blanket or corner hood style.

Rnd 1: With RS facing up, join to a corner. Ch 1, 3 sc in corner st. Evenly space sc across top and sides of the blanket, placing 3 sc in each corner. Join with sl st to beg sc. Fasten off.

The corner hood is sewn onto the corner with a whip stitch when completed.

Middle Hood Version

The hood will already be attached to the blanket. You will do the sc evenly spaced around the blanket with 3 sc in each corner. Include the hood when going around the blanket.

Option 2 - Middle Hood



The middle hood is built up as a rectangle directly on the blanket. We have to maintain the stitch look. At the end, we will fold the top of the new rectangle in half and sew shut to form the hood.



Locate the centre of side.

1. Fold blanket in half and place stitch marker on stitch that is at the half way spot. This is the centre stitch.
2. Starting on the next stitch beside it, count 21 sts over and mark it with a stitch marker. Then go back to centre stitch marker and count 21

sts starting with the next stitch on the opposite side of the centre.

3. You should have 43 sts total. This is where the hood will appear.

1st row: (RS) With RS facing up, join with sl st to 1st stitch marker. Ch 1, 1 scblo in each st across to the last stitch marker. Turn. 43 sts.

Use the stitch row combo from the main blanket.

2nd - 17th rows: Rep rows 2 - 9 as done in the baby blanket (twice).

18th - 23rd rows: Rep rows 2 - 7.

24th row: Rep row 2. Fasten off.

Fold the hood in half with the WS facing each other. Whip stitch using back loops across to seal top of the hood.

Option 3 - Corner Hood



The main blanket needs to be completed, including the final border for this option.

The stitch combination is the same but we have to grow it out from a centre point.

Crochet Baby of Mine Blanket

By Michael Sellick, ©2021 The Crochet Crowd



Ch 2.

1st row: (RS) 3 sc 2nd ch from hook. Turn. 3 sts.

2nd row: (WS) Ch 1, (1 sc, 1 tr) in first st. 1 sc in next st, (1 tr, 1 sc) in last st. Turn. 5 sts.

3rd row: Ch 1, 2 sc in first st. 1 sc in each st across. 2 sc in last st. Turn. 7 sts.

4th row: Ch 1, (1 sc, 1 tr) in first st. 1 sc in next st, *1 tr in next st, 1 sc in next st. Rep from * across. (1 tr, 1 sc) in last st. Turn. 9 sts.

5th row: Ch 1, 2 sc in first st. 1 sc in each st across. 2 sc in last st. Turn. 11 sts.

6th row: Ch 1, (1 sc, 1 tr) in first st. 1 sc in next st, *1 tr in next st, 1 sc in next st. Rep from * across. (1 tr, 1 sc) in last st. Turn. 13 sts.

7th row: Ch 1, 2 sc in first st. 1 sc in each st across. 2 sc in last st. Turn. 15 sts.

8th row: Ch 1, 2 scblo in first st, 1 scblo in each st across. 2 scblo in last st. Turn. 17 sts.

9th row: Ch 1, 2 sc in first st. 1 sc in each st across. 2 sc in last st. Turn. 19 sts.

10th row: Ch 1, (1 sc, 1 tr) in first st. 1 sc in next st, *1 tr in next st, 1 sc in next st. Rep from * across. (1 tr, 1 sc) in last st. Turn. 21 sts.

The triangle will get bigger as you progress. Each row increases by 2 sts.

Repeat rows 3 - 10 once more. Then repeat 3 - 8. Do not fasten off or turn on the last row.

Triangle Border

Rnd 1: (RS) Ch 1, 5 sc in same corner stitch, 1 sc in evenly spaced to the beginning corner point, 3 sc in corner point. 1 sc evenly spaced across to next sharp corner. 5 sc in corner st. 1 sc in each st across to beginning sc. Join with sl st and fasten off.



Match the centre point of the triangle to the corner of the blanket with the WS facing each other.

I decided it was best to start in the corner point of the blanket and triangle so the hood attachment

would be directly in the middle.

Start sewing from the centre point matching the stitches of the sides of the blanket using the back loops only for a seamless join. Fasten off when you get to the end the triangle side.



Begin a new sewing strand at the point (corner of the blanket) and sew down the other side of the triangle. Fasten off.

Crochet Baby of Mine Blanket

By Michael Sellick, ©2021 The Crochet Crowd

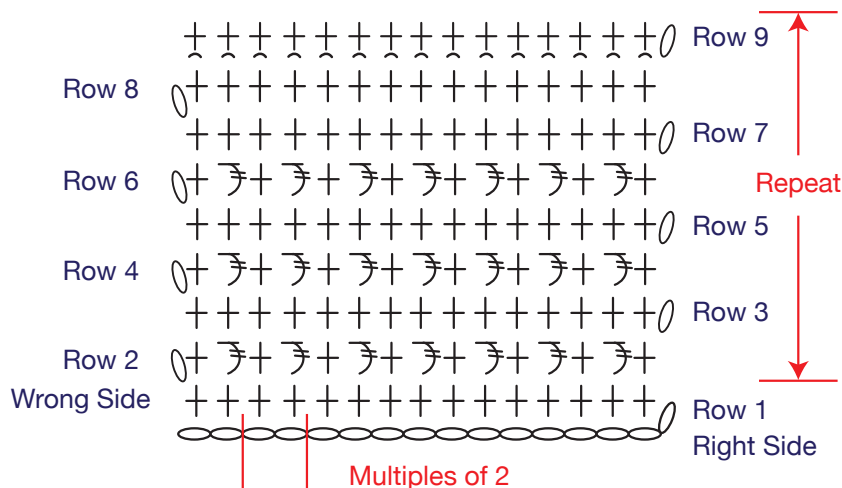
Baby of Mine Blanket

Designed by Michael Sellick

Hooded Versions or full size baby blanket is 32" x 36" without hood.

OPTIONAL: If you only want to use 1 ball of Caron One Pound for a baby blanket without hood, repeat only 8 times more, then 2 - 7. 36" x 27" long.

Main body repeat rows 2 to 9 (10 more times), then rows 2 - 7. Refer to instructions for side hood repeat instructions.

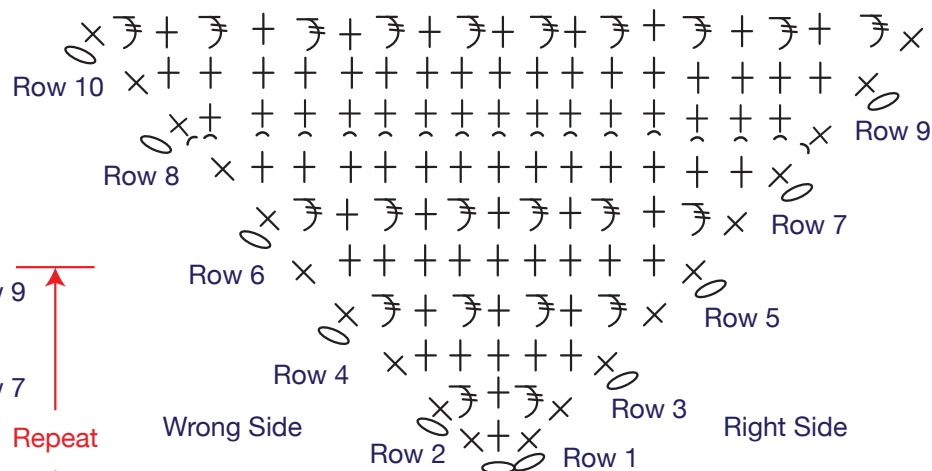


Colour strategy would be to change colours at row 9 which creates a step-in look for the next section.

○ Chain
+ Single Crochet
T Treble Crochet

• Slip Stitch

Continue to expand with each row.



Continue to grow outward for corner hood repeat rows 3 to 10 (1 more time), then rows 3 - 8.

Evenly single crochet around, placing 3 sc at the point of the beginning row 1. 5 sc at the two other sharp corners to turn. Sew to corner of blanket.

Crochet Baby of Mine Blanket

By Michael Sellick, ©2021 The Crochet Crowd



Baby of Mine Blanket

Designed by Michael Sellick

Schematics of assembly.

Fold In Half
Sew Across Top

Hood

Regular Blanket

Crochet directly into position using the
middle 43 sts.

Blanket with Middle
Hood Added

Make triangle and sew to the
corner.

Hood

Blanket with Corner
Hood Added

