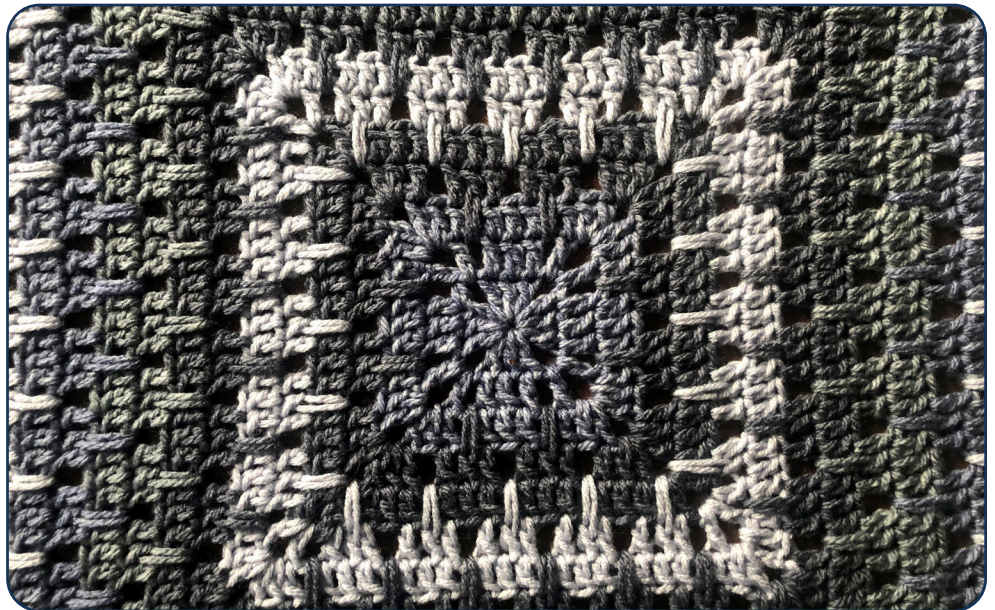




Larksfoot Granny Afghan

Designed By: Jeanne Steinhilber

©2021 The Crochet Crowd



Caron® Cakes™ Lovely Layers™ (240 g/8.5 oz, 407 m/445 yds)
Color A - Sugar Plums - 4 balls

Red Heart® With Love™ (150 g/5.29 oz, 271 m/296 yards)
Color B - Oxford - 3 balls

Size U.S. H/8 (5.0 mm) crochet hook.

Measurements Approx 45" x 63" [114 x 160 cm].

Abbreviations List

Beg = Begin(ning)
Ch = Chain
Dc = Double crochet
Hdc = Half double crochet
Rem = Remains
Rep = Repeat
Rnd(s) = Round(s)
Sk = Skip
Sl st = Slip stitch
Sp = Space
St(s) = Stitch(es)

Special Stitches

When working double crochet in space 2 rounds below, pull loop up to match height of current round.

Instructions

1st rnd: (RS) With A, ch 4, in first ch, 2 dc, ch 2, [3 dc, ch 2] 3 times, hdc join to beg ch. 3 dc per side.

2nd rnd: Ch 4 (counts as dc and ch 1), *1 dc in next 3 sts, ch 1,** (1 dc, ch 2, 1 dc, ch 1) in ch-2 sp; rep from * twice, then from * to ** once, 1 dc in beg sp, hdc join to 3rd ch. 5 dc, 2 ch-1 sps per side.

3rd rnd: Ch 3, 1 dc in same sp, *1 dc in next st, ch 1, 1 dc in next 3 sts, ch 1, 1 dc in next st,** (2 dc, ch 2, 2 dc) in ch-2 sp; rep from * twice, then from * to ** once, 2 dc in beg

sp, hdc join to beg ch. 9 dc, 2 ch-1 sps per side.

4th rnd: Ch 3, 1 dc in same sp, *1 dc in next st, ch 1, sk next st, [1 dc in next st, 1 dc in sp 2 rnds below, 1 dc in next st, ch 1, sk next st] twice, 1 dc in next st,** (2 dc, ch 2, 2 dc) in ch-2 sp; rep from * twice, then from * to ** once, 2 dc in beg sp, hdc join to beg ch. 12 dc, 3 ch-1 sps per side.

5th rnd: Ch 4, *1 dc in next 3 sts, [ch 1, sk ch-1 sp, 1 dc in next 3 sts] to corner, (ch 1, 1 dc, ch 2, 1 dc, ch 1) in ch-2 sp; rep from * twice, then from * to ** once, ch 1, 1 dc in beg sp, hdc join to 3rd ch. Break A. 14 dc, 5 ch-1 sps per side.

6th rnd: Attach B in any corner sp, ch 4, *1 dc in next st, 1 dc in sp 2 rnds below, 1 dc in next st, [ch 1, sk next st, 1 dc in next st, 1 dc in sp 2 rnds below, 1 dc in next st] to corner,** (ch 1, 1 dc, ch 2, 1 dc, ch 1) in ch-2 sp; rep from * twice, then from * to ** once, ch 1, 1 dc in beg sp, hdc join to 3rd ch. 17 dc, 6 ch-1 sps per side.

7th rnd: Ch 3, 1 dc in same sp, *1 dc in next st, ch 1, sk ch-1 sp, [1 dc in next 3 sts, ch 1, sk ch-1 sp] until 1 st rem before corner, 1 dc in next st,** (2 dc, ch 2, 2 dc) in ch-2 sp; rep from * twice, then from * to ** once, 2 dc in beg sp, hdc join to beg ch. Break B. 21 dc, 6 ch-1 sps per side.

8th rnd: Attach A in any corner sp, ch 3, 1 dc in same sp, *1 dc in next st, ch 1, sk next st, [1 dc in next st, 1 dc in sp 2 rnds below, 1 dc in next st, ch 1, sk next st] until 1 st rem before corner, 1 dc in next st,** (2 dc, ch 2, 2 dc) in ch-2 sp; rep from * twice, then from * to ** once, 2 dc in beg sp, hdc join to beg ch. 24 dc, 7 ch-1 sps per side.

9th rnd: Ch 4, *1 dc in next 3 sts, [ch 1, sk ch-1 sp, 1 dc in next 3 sts] to corner,** (ch 1, 1 dc, ch 2, 1 dc, ch 1) in ch-2 sp; rep from * twice, then from * to ** once, ch 1, 1 dc in beg sp, hdc join to 3rd ch. 26 dc, 9 ch-1 sps per side.

10th rnd: Ch 4, *1 dc in next st, 1 dc in sp 2 rnds below, 1 dc in next st, [ch 1, sk next st, 1 dc in next st, 1 dc in sp 2

rnds below, 1 dc in next st] to corner,** (ch1, 1 dc, ch 2, 1 dc, ch1) in ch-2 sp; rep from * twice, then from * to ** once, ch 1, 1 dc in beg sp, hdc join to 3rd ch. 29 dc, 10 ch-1 sps per side.

11th rnd: Ch 3, 1 dc in same sp, *1 dc in next st, ch 1, sk ch-1 sp, [1 dc in next 3 sts, ch 1, sk ch-1 sp] until 1 st rem before corner, 1 dc in next st,** (2 dc, ch 2, 2 dc) in ch-2 sp; rep from * twice, then from * to ** once, 2 dc in beg sp, hdc join to beg ch. 33 dc, 10 ch-1 sps per side.

12th rnd: Ch 3, 1 dc in same sp, *1 dc in next st, ch 1, sk next st, [1 dc in next st, 1 dc in sp 2 rnds below, 1 dc in next st, ch 1, sk next st] until 1 st rem before corner, 1 dc in next st,** (2 dc, ch 2, 2 dc) in ch-2 sp; rep from * twice, then from * to ** once, 2 dc in beg sp, hdc join to beg ch. 36 dc, 11 ch-1 sps per side.

13th rnd: Ch 4, *1 dc in next 3 sts, [ch 1, sk ch-1 sp, 1 dc in next 3 sts] to corner,** (ch 1, 1 dc, ch 2, 1 dc, ch 1) in ch-2 sp; rep from * twice, then from * to ** once, ch 1, 1 dc in beg sp, hdc join to 3rd ch. Break A. 38 dc, 11 ch-1 sps per side.

14th - 37th rnds: Repeat 6th thru 13th rounds.

Begin working in rows with RS facing up.

1st row: Attach B in any corner sp, ch 3, 1 dc in next st, 1 dc in sp 2 rnds below, 1 dc in next st, [ch 1, sk next st, 1 dc in next st, 1 dc in sp 2 rnds below, 1 dc in next st] to corner, 1 dc in ch-2 sp. Turn. 113 dc, 36 ch-1 sps.

2nd row: Ch 3, 1 dc in next 3 sts, [ch 1, sk ch-1 sp, 1 dc in next 3 sts] until 1 st rem, 1 dc in last st. Change to A. Turn.

3rd row: Ch 3, 1 dc in next st, [ch 1, sk next st, 1 dc in next st, 1 dc in sp 2 rnds below, 1 dc in next st] until 3 sts rem, sk next st, 1 dc in last 2 sts. Turn.

4th row: Ch 3, 1 dc in next st, ch 1, sk ch-1 sp, [1 dc in next 3 sts, ch 1, sk ch-1 sp] until 2 sts rem, 1 dc in last 2 sts. Turn.

5th row: Ch 3, 1 dc in next st, 1 dc in sp 2 rnds below, 1 dc in next st, [ch 1, sk next st, 1 dc in next st, 1 dc in sp 2 rnds below, 1 dc in next st] to corner, 1 dc in ch-2 sp. Turn.

6th row: Ch 3, 1 dc in next 3 sts, [ch 1, sk ch-1 sp, 1 dc in next 3 sts] until 1 st rem, 1 dc in last st. Turn.

7th row: Ch 3, 1 dc in next st, [ch 1, sk next st, 1 dc in next st, 1 dc in sp 2 rnds below, 1 dc in next st] until 3 sts rem, sk next st, 1 dc in last 2 sts. Turn.

8th row: Ch 3, 1 dc in next st, ch 1, sk ch-1 sp, [1 dc in next 3 sts, ch 1, sk ch-1 sp] until 2 sts rem, 1 dc in last 2 sts. Change to B. Turn.

9th row: Ch 3, 1 dc in next st, 1 dc in sp 2 rnds below, 1 dc in next st, [ch 1, sk next st, 1 dc in next st, 1 dc in sp 2 rnds below, 1 dc in next st] to corner, 1 dc in ch-2 sp. Turn.

10th row: Ch 3, 1 dc in next 3 sts, [ch 1, sk ch-1 sp, 1 dc in next 3 sts] until 1 st rem, 1 dc in last st. Change to A. Turn.

11th - 16th rows: Rep 3rd - 8th row. Fasten off.

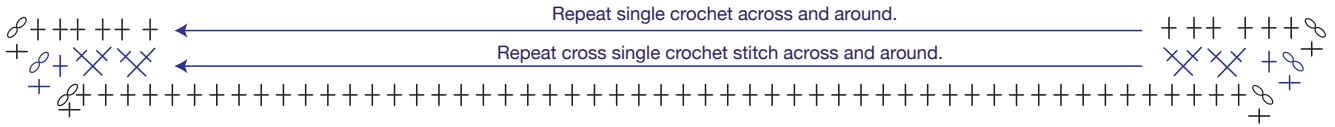
Repeat 1st - 16th rows on opposite end of blanket.

Border

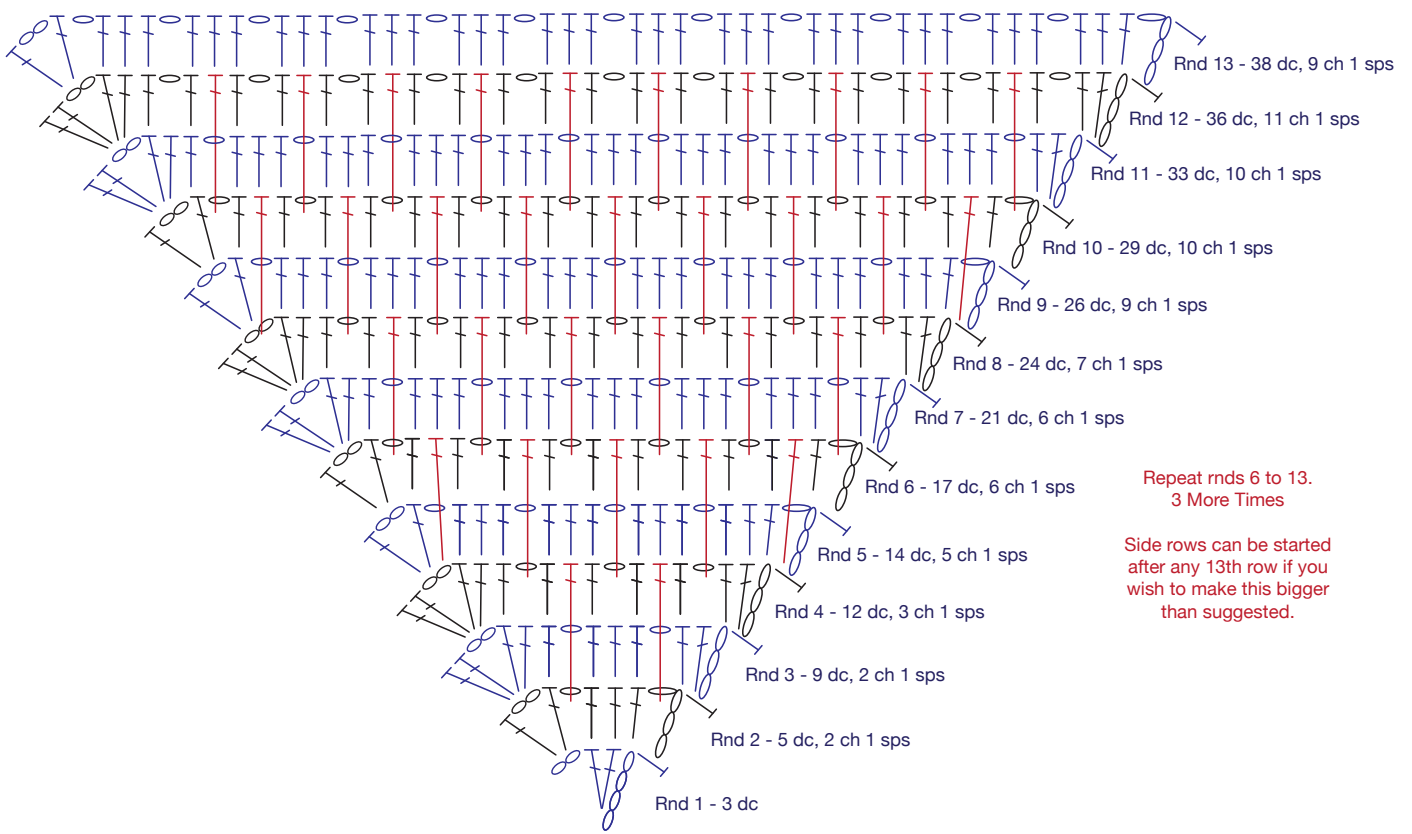
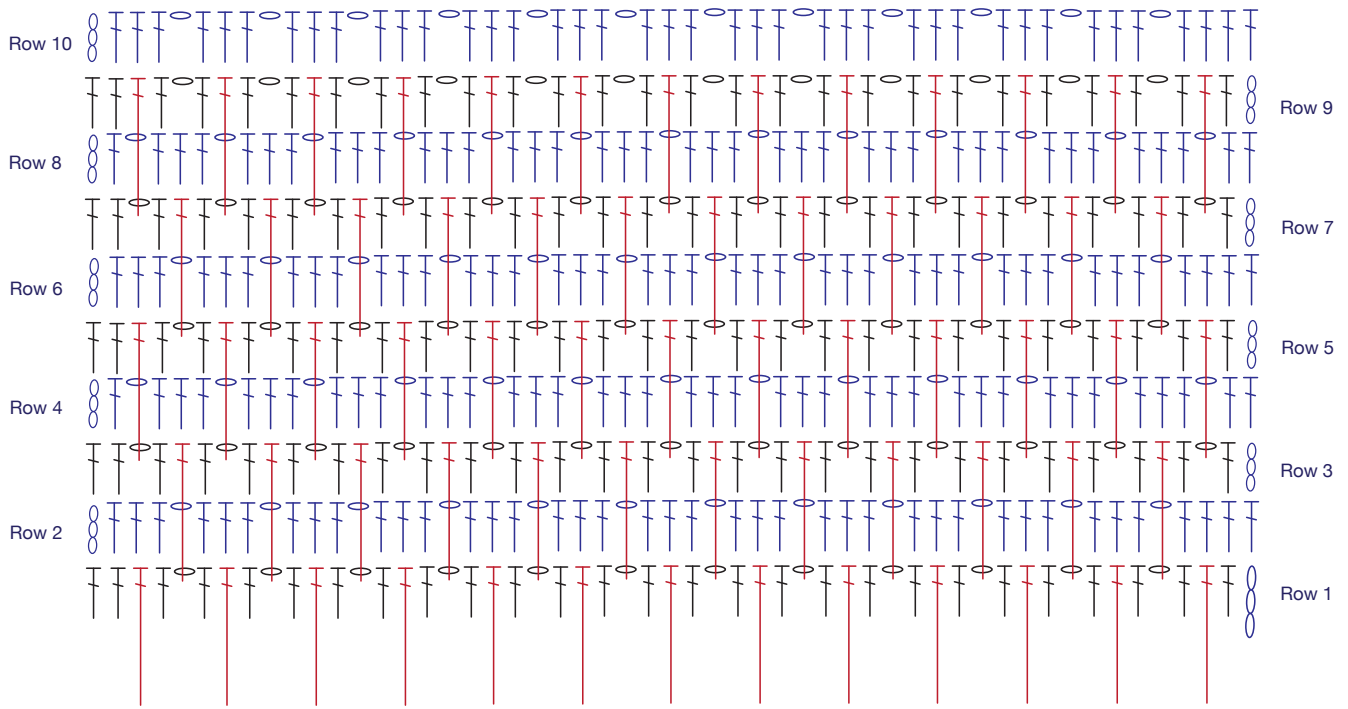
1st rnd: Attach B in any ch-2 corner with a standing sc, ch 2, 1 sc in same sp, 1 sc in each st and evenly across ends of rows, working (1 sc, ch 2, 1 sc) in the corner sps, sl st to be sc. Break B.

2nd rnd: Attach A in any ch-2 corner with a standing sc, ch 2, 1 sc in same sp, *[sk next st, 1 sc in next st, 1 sc in skipped st] to corner,** (1 sc, ch 2, 1 sc) in ch-2 sp; rep from * twice, then from * to ** once, sl st to beg sc. Break A.

3rd rnd: Attach B in any ch-2 corner with a standing sc, 2 sc in same sp, *1 sc in each st to corner,** (3 sc) in ch-2 sp; rep from * twice, then from * to ** once, sl st to beg sc. Fasten off.



Repeat rows 3 to 8 to finish this side. Repeat Rows 1 to 16 again on the opposite side.



Repeat rnds 6 to 13.
3 More Times

Side rows can be started
after any 13th row if you
wish to make this bigger
than suggested.