

Version 1



Version 2



MATERIALS

Version 1

Caron® One Pound™ (16 oz/453.6 g; 812 yds/742 m)

Contrast A Off White (10514) **1 ball or 609 yds/557 m**

Contrast B Living Coral (02003) **1 ball or 715 yds/654 m**

Contrast C and G Sunflower (10549) **1 ball or 406 yds/371 m**

Contrast D Soft Sage (10580) **1 ball or 376 yds/344 m**

Caron® Jumbo™ (12 oz/340 g; 595 yds/544 m)

Contrast E and F

Garden Grows (09055) **1 ball or 306 yds/280 m**

Version 2

Caron® One Pound™ (16 oz/453.6 g; 812 yds/742 m)

Contrast A, C, E and F

Off White (10514) **2 balls or 993 yds/908 m**

Caron® Jumbo™ (12 oz/340 g; 595 yds/544 m)

Contrast B, D, and G Zinnias (09053) **3 balls or 1515 yds/1385 m**

Size U.S. J/10 (6mm) crochet hook **or size needed to obtain gauge.**
T-pins for blocking. Safety pins for joining. 4 stitch markers.



CROCHET | SKILL LEVEL: INTERMEDIATE

ABBREVIATIONS

Approx = Approximately

Beg = Beginning

Bobble Pompom = (Yoh and draw up a loop. Yoh and draw through 2 loops on hook) 10 times in 4th ch from hook. Yoh and draw through all 11 loops on hook. Ch 1 tightly to close.

Ch = Chain(s)

Cont = Continue(ity)

Dc = Double crochet

Dtr = Double treble crochet = Yoh 3 times and draw up a loop in indicated st. (Yoh and draw through 2 loops on hook) 4 times.

Hdc = Half double crochet

Puff St = (Yoh and draw up a long loop in indicated stitch) twice. Yoh and draw through all 5 loops on hook. Ch 1 tightly to close.

Pat = Pattern

PM = Place maker

Rep = Repeat

Rnd(s) = Round(s)

RS = Right side

Sc = Single crochet

Sl st = Slip stitch

Sp(s) = Space(s)

St(s) = Stitch(es)

Standing dc = Place slip knot on hook as if to chain (counts as loop). Holding slip knot in place, yoh and draw up a loop in indicated st. (Yoh and draw through 2 loops on hook) twice.

Standing sc = Place slip knot on hook as if to chain (counts as loop). Holding slip knot in place, draw up a loop in indicated st. Yoh and draw through 2 loops on hook.

Tog = Together

Tr = Treble crochet

WS = Wrong side

Yoh = Yarn over hook

MEASUREMENTS

Approx 50" x 58" [127 x 147.5 cm], excluding Bobble Pompom Trim.

Ever wonder how to achieve a perfectly sized garment, or how to make sure your crochet motifs fit together just-so? This document will help take the mystery out of two of the most important skills in your crochet toolbox: Gauge and Blocking.

Following is an in-depth look at both gauge and blocking as it relates to the Puffy Flower Fun Day Crochet Blanket Stitch Along. It also includes full written instructions for each gauge swatch you should complete before beginning Week 1 of the Stitch Along. As you work your way through this document, you will complete gauge swatches, determine the best hook size(s) you will need to use for your project, and learn how to block things to the perfect size. By the end of this prep-work, you will have all the tools to ensure your Puffy Flower Fun Day Crochet Blanket is the most beautiful floral masterpiece it can be! So now, let's get started!

GAUGE AND BLOCKING

GAUGE AND WHAT YOU NEED TO KNOW!

Gauge is the key to ensuring your pattern works out exactly the way you expect, so let's have a closer at gauge, what it is, and how to achieve it.

Gauge – What Is It?

Gauge is the number of stitches and rows per inch [or cm] in a pattern. If the gauge **does not** match the gauge given in a pattern, the item you're making will not end up the correct size.

A gauge swatch is a small sample of your pattern you make before starting the main item. It allows you to measure your gauge to make sure the finished item will be the size you want it to be and you will not run out of yarn. In the case of this blanket design, the wrong gauge might mean your pieces won't fit together properly.

How To Crochet A Gauge Swatch
Always work with the same yarn you're using for the main item.

Chain enough stitches for your swatch to be 5-6" [12.5-15 cm] across and crochet enough rows to make a square. Work in the same pattern that the gauge calls for. If different gauges are given for different stitch patterns, make sure you make a swatch for each stitch pattern. Look for the Gauge Swatch Patterns at the beginning of each section of this Stitch Along!

For patterns made of individual pieces or motifs, the gauge to achieve could be to match the finished size of one motif.

How To Measure A Gauge Swatch

After completing your gauge swatch, place it on a flat, hard surface with good lighting. Use a ruler to count the number of rows and stitches in the number of inches [or cm] stated in the pattern gauge. The best practice is to count over 4" [10 cm]. The gauge swatch should be larger than the area you need to measure, so focus on interior stitches to measure your gauge. Remember, half-stitches count too!

What If My Gauge Doesn't Match the Pattern Gauge?

The recommended hook size is just a suggestion. Your gauge may or may not exactly match up with the pattern gauge using the same yarn and hook size. This is normal and you may need to choose a different hook size.

If you have more stitches and rows per inch than the pattern calls for, use a larger size hook.

If you have fewer stitches and rows per inch than the pattern calls for, use a smaller size hook.

You may need to make a few gauge swatches before you get your gauge exactly right!

When you've finished your swatch-and achieved gauge- you are ready to begin your project! You won't need the gauge swatch anymore, so feel free to pull it out to re-use the yarn if desired.

Find a video tutorial at:

<https://www.yarnspirations.com/ca-en/how-to-measure-crochet-gauge.html>

BLOCKING AND WHAT YOU NEED TO KNOW!

If you've achieved specified gauges, your finished pieces should match the sizes indicated in the pattern. However, when creating different size motifs and panels that need to fit together, it's a good idea to be a little more precise before trying to seam it all up. This is where blocking comes in!

Blocking – What Is It?

Blocking uses moisture to straighten out all the lumps, bumps, and edges in your finished piece or panel. This little extra step will help align all your stitches and straighten all your edges making it much easier to seam your pieces together.

How to Block Your Finished Piece

Materials Required:

- Hard, flat surface big enough for item to lay flat
- Towels
- Ruler or measuring tape
- Rust-proof T-shaped pins
- Spray bottle of water
- Small fan (optional)

To start, cover your blocking surface with towels. Whatever surface you

use needs to be padded enough for pins to stick in it without damaging what is underneath, but not so padded that it becomes soft. For larger pieces, freshly vacuumed carpet can work.

Lay out your finished item on your blocking surface. Using the T-pins, pin your item into place. Use the ruler or measuring tape to make sure that the sides are even and it is the correct size. Don't be afraid to stretch your work slightly necessary. When in doubt, use more pins!

Spray the item with water from the water bottle until it is very damp. Leave the item in place overnight or until it is dry. If you live in a humid climate or want to dry your item faster, run a fan across it to help the water evaporate.

Warning: It is not recommended to use heat or steam on items made with acrylic or other man-made fibers. Heat and/or steam may cause the fibers to go limp and possibly stretch.

Find video tutorials at:

<https://www.yarnspirations.com/how-to-video-rh-20180810-how-to-block-your-knits-beginner-knitting-teach-video-16.html>

<https://www.yarnspirations.com/ca-en/video-mb-wet-blocking-and-steam-blocking-acrylic-yarn-crochet-stitch-sampler-baby-blanket-11.html>

GAUGE SWATCHES FOR PUFFY FLOWER FUN DAY CROCHET BLANKET

Note: As you work through each gauge swatch, note the hook size you required to achieve the gauge so you have this information handy when you begin working on the Stitch Along.

SINGLE CROCHET ST GAUGE SWATCH

GAUGE

11 sc and 13 rows = 4" [10 cm].

INSTRUCTIONS

With A, ch 15.

1st row: 1 sc in 2nd ch from hook. 1 sc in each ch to end of chain. Turn. 14 sc.

2nd row: Ch 1. 1 sc in each sc to end of row. Turn.

Rep 2nd row until your work is approx square.

Fasten off and check your gauge!

PUFF DAISY ST GAUGE SWATCH

Version 1



Version 2



GAUGE

14 dc and 7 rows = 4" [10 cm] in Puff Daisy St Pat.

INSTRUCTIONS

Notes:

- Carry A when not in use loosely up side of work as indicated.
- Find instructions for Puff Stitch described in Abbreviations.
- **Do not** turn work after 1st, 5th, or 7th rows.
- Always work yarn A or B from where it was last left/fastened off.

With A, ch 17.

See diagram on page 4.

1st row: (RS). 1 sc in 2nd ch from hook. 1 sc in next sc. *Skip next 2 ch. Work 4 Puff sts in next ch. Skip

next 2 ch. 1 sc in each of next 2 ch. Rep from * to end of ch. Pull long loop. Remove hook. **Do not turn.** 14 sts.

2nd row: (RS). Join B with standing dc to first sc. 1 dc in next sc. *(Skip next Puff st. 2 dc in next sp) 3 times. Skip next Puff st. 1 dc in each of next 2 sc. Rep from * to end of row. Fasten off B. Turn. 18 sts.

3rd row: (WS). Re-insert hook into A loop. Pull up loop to height of 2nd row. Sl st in top of first dc. Ch 3 (counts as dc). Skip next dc. (Yoh and draw up a long loop) twice in next sp. Skip next 2 dc. (Yoh and draw up a long loop) twice in next sp. Yoh and draw through all 9 loops on hook. Ch 1 tightly to close – Left-hand 2-Puff Cluster made. Ch 2. 1 sc in each of next 2 dc. *Ch 2. (Yoh and draw up a long loop) twice in next sp. [Skip next 2 dc. (Yoh and draw up a long loop) twice in next sp] 3 times. Yoh and draw through all 17 loops on hook. Ch 1 tightly to close – 4-Puff Cluster made. Ch 2. 1 sc in each of next 2 dc. Rep from * to last 4 dc. Ch 2. (Yoh and draw up a long loop) twice in next sp. Skip next 2 dc. (Yoh and draw up a long loop) twice in next sp. Yoh and draw through all 9

loops on hook. Ch 1 tightly to close – Right-hand 2-Puff Cluster made. Skip next dc. 1 dc in last dc. Turn.

4th row: (RS). Ch 3 (counts as dc). Work 2 Puff sts in top of Right-hand 2-Puff Cluster. Skip next ch-2. 1 sc in each of next 2 sc. *Skip next ch-2. Work 4 Puff sts in top of next 4-Puff Cluster. Skip next ch-2. 1 sc in each of next 2 sc. Rep from * to last ch-2. Skip next ch-2. Work 2 Puff sts in top of Left-hand 2-Puff Cluster. 1 dc in last dc (top of ch-3). Turn. Pull long loop. Remove hook.

5th row: (WS). Join B with standing dc to first dc. 1 dc in same first dc. Skip next Puff st. 2 dc in next sp. Skip next Puff st. 1 dc in each of next 2 sc. *(Skip next Puff st. 2 dc in next sp) 3 times. Skip next Puff st. 1 dc in each of next 2 sc. Rep from * to last 3 sts. Skip next Puff st. 2 dc in next sp. Skip next Puff st. 2 dc in last dc (top of ch-3). **Do not turn.** Fasten off B.

6th row: (WS). Re-insert hook into A loop. Pull up loop to height of 5th row. Sl st in top of first dc. Ch 1. 1 sc in same first dc. 1 sc in next dc. *Ch 2. (Yoh and draw up a long loop) twice in next sp. [Skip next 2 dc. (Yoh and draw up a long loop) twice in next sp] 3 times. Yoh

and draw through all 17 loops on hook. Ch 1 tightly to close – 4-Puff Cluster made. Ch 2. 1 sc in each of next 2 dc. Rep from * to end of row. Turn.

7th row: (RS). Ch 1. 1 sc in each of first 2 sc. *Skip next ch-2. Work 4 Puff sts in top of next 4-Puff Cluster. Skip next ch-2. 1 sc in each of next 2 sc. Rep from * to end of row. Pull long loop. Remove hook. **Do not turn.**

Rep 2nd and 3rd rows once more. Fasten off and check your gauge!

DOUBLE CROCHET ST GAUGE SWATCH

GAUGE

11 dc and 6.5 rows = 4" [10 cm].

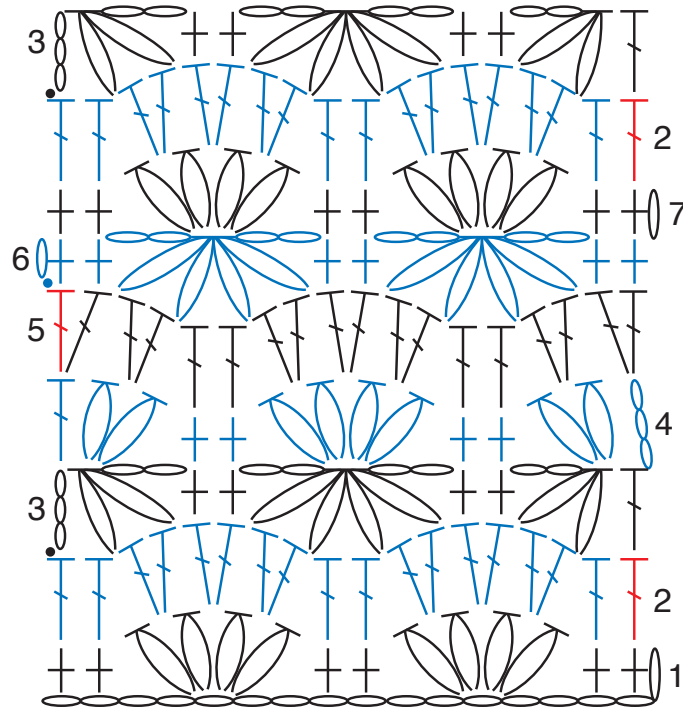
INSTRUCTIONS

With C, ch 16.

1st row: 1 dc in 4th ch from hook (counts as 2 dc). 1 dc in each ch to end of chain. Turn. 14 dc.

2nd row: Ch 3 (counts as 1 dc). 1 dc in each dc to end of row. Turn. Rep 2nd row until your work is approx square.










Fasten off and check your gauge!



PUFF DAISY STITCH GAUGE SWATCH PATTERN

Note: Do not turn work after 1st, 5th, or 7th rows.
Always work yarn A or B from where it was last left/fastened off.

STITCH KEY

-  = chain (ch)
-  = slip stitch (sl st)
-  = single crochet (sc)
-  = double crochet (dc)
-  = standing double crochet (standing dc)
-  = Puff stitch (Puff st)
-  = Left-hand 2-Puff Cluster
-  = 4-Puff Cluster
-  = Right-hand 2-Puff Cluster

MOTIF GAUGE SWATCH

Version 1



Version 2



GAUGE

1 Motif = 7¼" [18.5 cm] square.

INSTRUCTIONS

Note: Find instructions for Puff Stitch in Abbreviations

Once you achieve gauge on the Double Crochet St Gauge Swatch above, you can move on to your Motif. Make 1 full Motif from the instructions below to check your gauge.

MOTIF (make 1)

With C, ch 4.

1st rnd: 11 dc in 4th ch from hook. Join with sl st in top of first ch-4. 12 dc.

2nd rnd: Ch 3 (counts as 1 dc). 1 dc in first dc. 2 dc in each dc around. Join with sl st in top of first ch-3. Fasten off. 24 dc.

3rd rnd: Join B with standing dc in any dc. 1 dc in each dc around. Join with sl st in top of first dc. Fasten off. 24 dc.

4th rnd: Join E with sl st in any sp between 2 dc. Ch 2. Work 1 Puff st in same sp. Work 1 Puff st in each sp around. Join with sl st in top of first Puff st. Fasten off. 24 Puff sts.

5th rnd: Join D with standing dc in any sp between 2 Puff sts. 1 dc in same sp. 2 dc in each sp around. Join with sl st in top of first dc. 48 dc.

6th rnd: Ch 1. *2 sc in next dc. (1 hdc. 1 dc) all in next dc. (1 dc. 1 tr) all in next dc. (1 tr. 1 dtr) all in next dc. (1 dtr. 1 tr) all in next dc. (1 tr. 1 dc) all in next dc. (1 dc. 1 hdc) all in next dc. 2 sc in next dc. Sl st in each of next 4 dc. Rep from * 3 times more to end of rnd. Join with sl st in first sc. 80 sts.

7th rnd: Ch 1. 1 sc in each st around. Join with sl st in first sc. 80 sc. Fasten off.

FINISHING

Blocking: Pin Motif to measure: 7¼" [18.5 cm] square. Cover with a damp towel to dry.

Congratulations on finishing all your gauge swatches, you are ready to begin the Stitch Along!

STITCH KEY

- = chain (ch)
- = slip stitch (sl st)
- ⊥ = single crochet (sc)
- ⌋ = half double crochet (hdc)
- ⌋ = double crochet (dc)
- ⌋ = treble crochet (tr)
- ⌋ = double treble crochet (dtr)
- ⌋ = Puff stitch (Puff st)

