



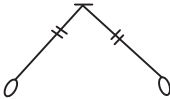




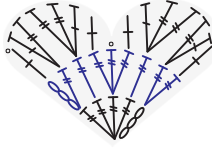
Ring Bearer's Crochet Doily Pillow

Design by Kathryn White on Yarnspirations.com

Crochet Diagram by Michael Sellick from The Crochet Crowd

January 24, 2023

Stitch Key

•	Slip Stitch		
○	Chain		Extended Treble Crochet 2 Together
+	Single Crochet		
┆	Half Double Crochet		4 Treble Cluster
┆┆	Double Crochet		
┆┆┆	Treble Crochet		Single Crochet Between Legs of Together Stitches
┆┆┆┆	Double Treble Crochet		Connect to Existing Heart
┆┆┆┆┆	Extended Treble Crochet		Loop Used to Start Individual Hearts
┆┆┆┆┆┆	Extended Treble Crochet		Individual Heart Motifs



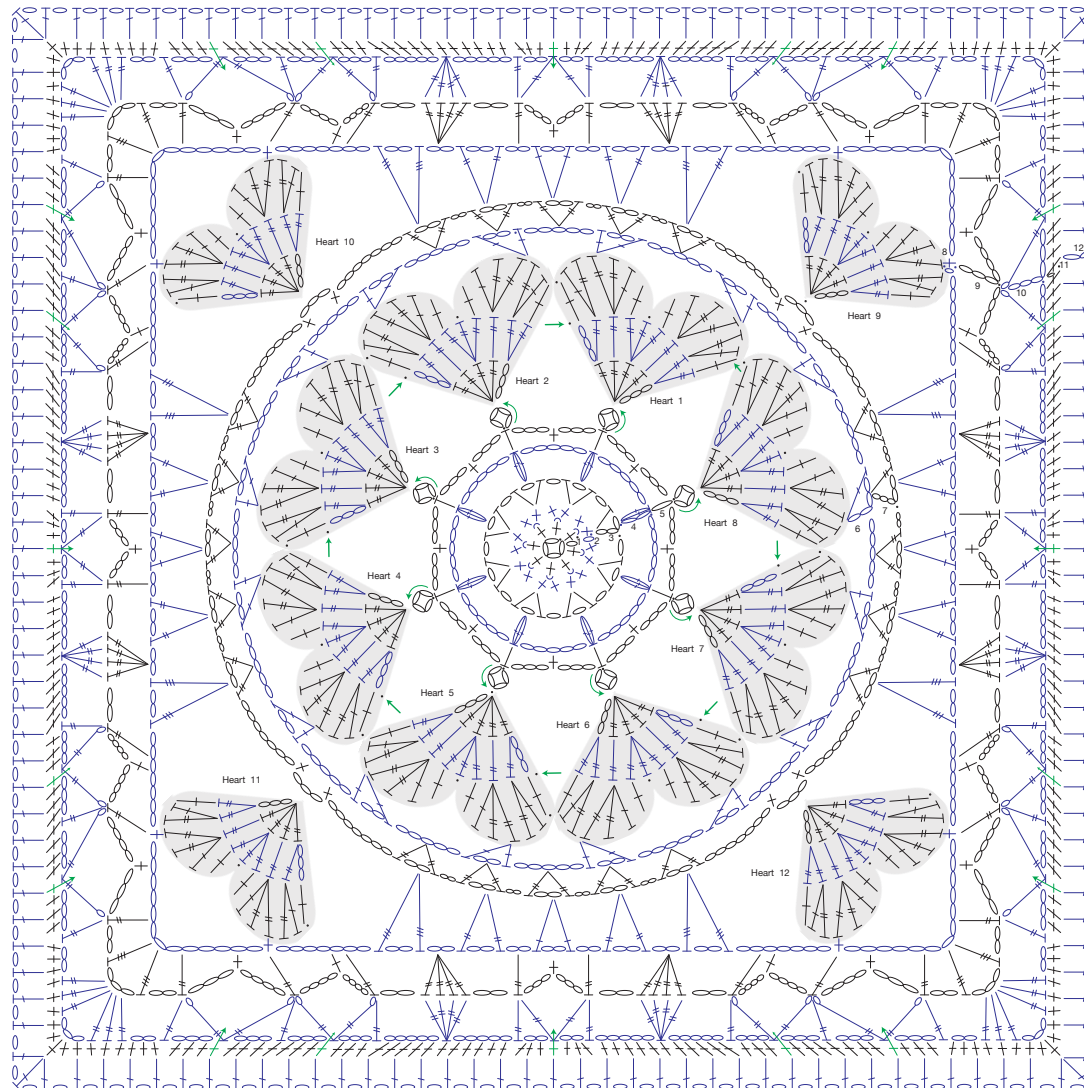


Ring Bearer's Crochet Doily Pillow

Design by Kathryn White on Yarnspirations.com

Crochet Diagram by Michael Sellick from The Crochet Crowd

Entire Square



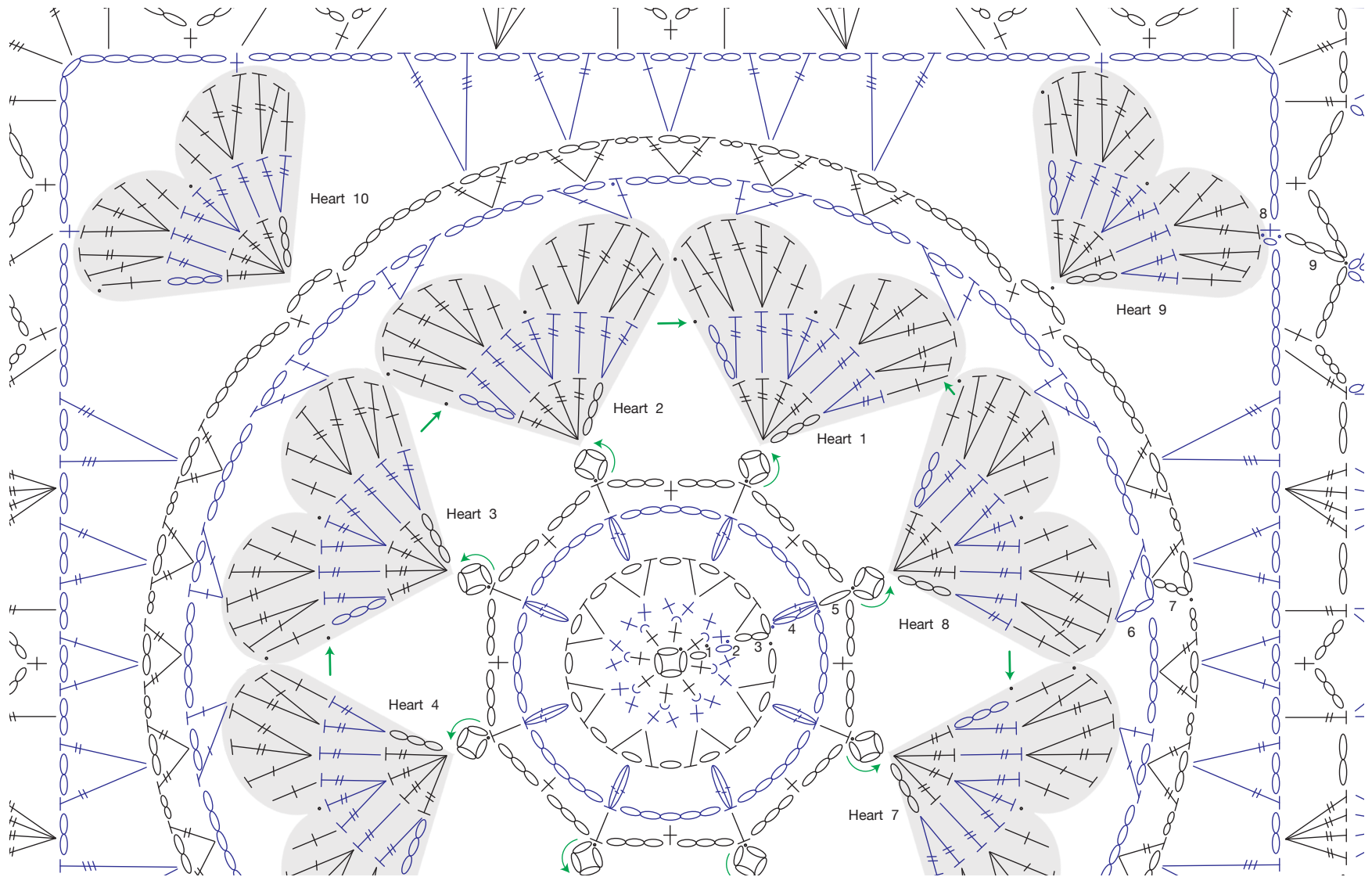


Ring Bearer's Crochet Doily Pillow

Design by Kathryn White on Yarnspirations.com

Crochet Diagram by Michael Sellick from The Crochet Crowd

Hearts are made individually and started by attaching to the loop in rnd 5 when you begin the heart. Connect to each heart as you go.





Ring Bearer's Crochet Doily Pillow

Design by Kathryn White on Yarnspirations.com

Crochet Diagram by Michael Sellick from The Crochet Crowd

Pillow stops at rnd 12. Do the back panel and then connect using single crochet.

