



ELVES CROCHET THROW | EASY

elvescrochetthrow.PDF | ©2023 THE CROCHET CROWD



Abbreviations

Beg Samurai St = Beginning Samurai Stitch. Dc in next 2 sts. Double crochet wrapping around the last 2 dc. (Stitch is 3 stitches wide.) Beg samurai stitch creates the extra stitch needed for the edging to maintain shape.
Blo = Back Loop Only
Ch(s) = Chain(s)
Dc = Double Crochet
Dc3tog = Double Crochet 3 Together
Flo = Front Loop Only
RS = Right Side
Samurai St = Skip next st, 1 dc in next 2 stitches. Double crochet wrapping around the last 2 dc. (Stitch is 3 stitches wide.)
Sc = Single Crochet
Sc3tog = Single Crochet 3 Together

Sk = Skip
Sl st = Slip Stitch
St(s) = Stitch(es)
Tr = Treble
Vst = V-Stitch = (1 dc. Ch 1. 1 dc) in same stitch.
WS = Wrong Side

Inspiration, Materials and Sizing

Easy up and down motion in an 8-row repeating pattern.

Colours determined by a cartoon depiction of Santa's Elves Workshop. The blanket is random colour ordering.

Caron One Pound

Grass Green, Off White, Soft Pink, Raspberry, Soft Sage, Scarlet and Canal.

Project Size: 54" x 48"

5.5 mm / I/9

Gauge: 13 sc and 14 rows = 4" [10] cm

Instructions

Grass Green, 242 grams. 8.53 oz. 123.5 meters, 135 yards.

Off White, 202 grams. 7.13 oz. 123.5 meters, 135 yards.

Soft Pink, 101 grams. 3.56 oz. 62 meters, 67 yards.

Raspberry, 202 grams. 7.13 oz.

123.5 meters, 135 yards.

Soft Sage, 202 grams. 7.13 oz. 123.5 meters, 135 yards.

Scarlet, 101 grams. 3.56 oz. 62 meters, 67 yards.

Canal, 101 grams. 3.56 oz. 62 meters, 67 yards.

Colouring Order:

Grass Green
Off White
Rose
Soft Sage
Scarlet
Canal
Soft Pink
Off White
Rose
Canal
Grass Green

With first colour, ch 214 or multiples of 28 chs + 18.

1st row: (WS) Dc in 4th ch from hook (ch and dc counts as 2 dc in same st), 1 dc in next 5 chs, *dc3tog over next 3 chs (valley or bottom of chevron), 1 dc in next 12 chs, 3 dc in next ch (peak or top of chevron), 1 dc in next 12 chs; rep from * until 9 chs remain, dc3tog over next 3 chs, 1 dc in next 5 chs, 2 dc in last ch. Turn. 211 sts.

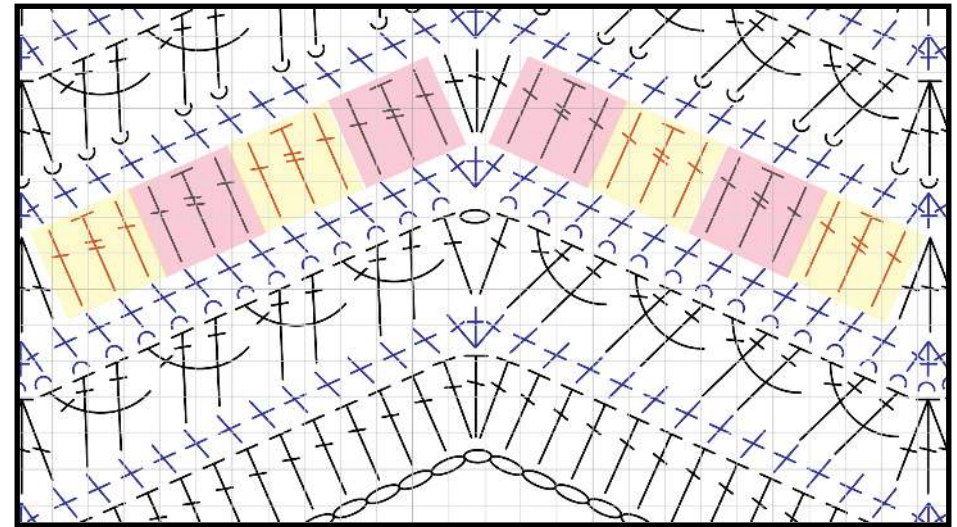
2nd row: (RS) Ch 1, 2 sc in same st, 1 sc in next 5 sts, *sc-

3tog over next 3 sts, 1 sc in next 12 sts, 3 sc in next st, 1 sc in next 12 sts; rep from * until 9 sts remain, sc3tog over next 3 sts, 1 sc in next 5 sts, 2 sc in last st. Turn. 211 sts.

3rd row: Ch 3 (counts as dc here and throughout), beg samurai st, samurai st. *dc3tog over next 3 sts, (samurai st) 4 times, vst in next st, (samurai st) 4 times; rep from * until 9 sts remain, dc3tog over next 3 sts, (samurai st) twice, 1 more dc in last st (Hint: Last samurai st uses the last st of the row). Turn. 211 sts.

For easier double-checking. Each edge has 2 samurai sts and chevrons have 4 samurai stitches going up and another 4 samurai stitches going down.

4th row: Using blo only. Ch 1, 2 sc in same st, 1 sc in next 5 sts, *sc3tog over next 3 sts, 1 sc in next 12 sts, 3 sc in next st, 1 sc in next 12 sts; rep from * until 9 sts remain, sc3tog over



next 3 sts, 1 sc in next 5 sts, 2 sc in last st. Turn. 211 sts.

In the 5th row, the repeating can confuse people. I've highlighted the repeating so you can see it easier. Each repeat is consisting of 3 stitches. When the pattern states to repeat four times, those are four repeats going up and down on the main chevrons.

5th row: Ch 1, 2 sc in same beg st. 1 tr in next st, 1 sc in next 2 sts, 1 tr in next st, 1 sc in next st, *sc3tog over next 3

sts, [1 sc in next st, 1 tr in next st, 1 sc in next st] four times, 3 sc in next st, [1 sc in next st, 1 tr in next st, 1 sc in next st] four times; rep from * until 9 sts remain, sc3tog over next 3 sts, [1 sc in next st, 1 tr in next st, 1 sc in next st] twice, 1 more sc in last st. Turn. 211 sts.

6th row: Ch 1, 2 sc in same st, 1 sc in next 5 sts, *sc3tog over next 3 sts, 1 sc in next 12 sts, 3 sc in next st, 1 sc in next 12 sts; rep from * until 9 sts remain, sc3tog over next 3 sts, 1 sc in next 5 sts, 2 sc in last st. Turn.

211 sts.

7th row: Using flo only. Ch 3 (counts as dc here and throughout), beg samurai st, samurai st. *dc3tog over next 3 sts, (samurai st) 4 times, vst in next st, (samurai st) 4 times; rep from * until 9 sts remain, dc3tog over next 3 sts, (samurai st) twice, 1 more dc in last st (Hint: Last samurai st uses the last st of the row). Turn. 211 sts.

For easier double-checking. Each edge has 2 samurai sts and chevrons have 4 samurai stitches going up and another 4 samurai stitches going down.

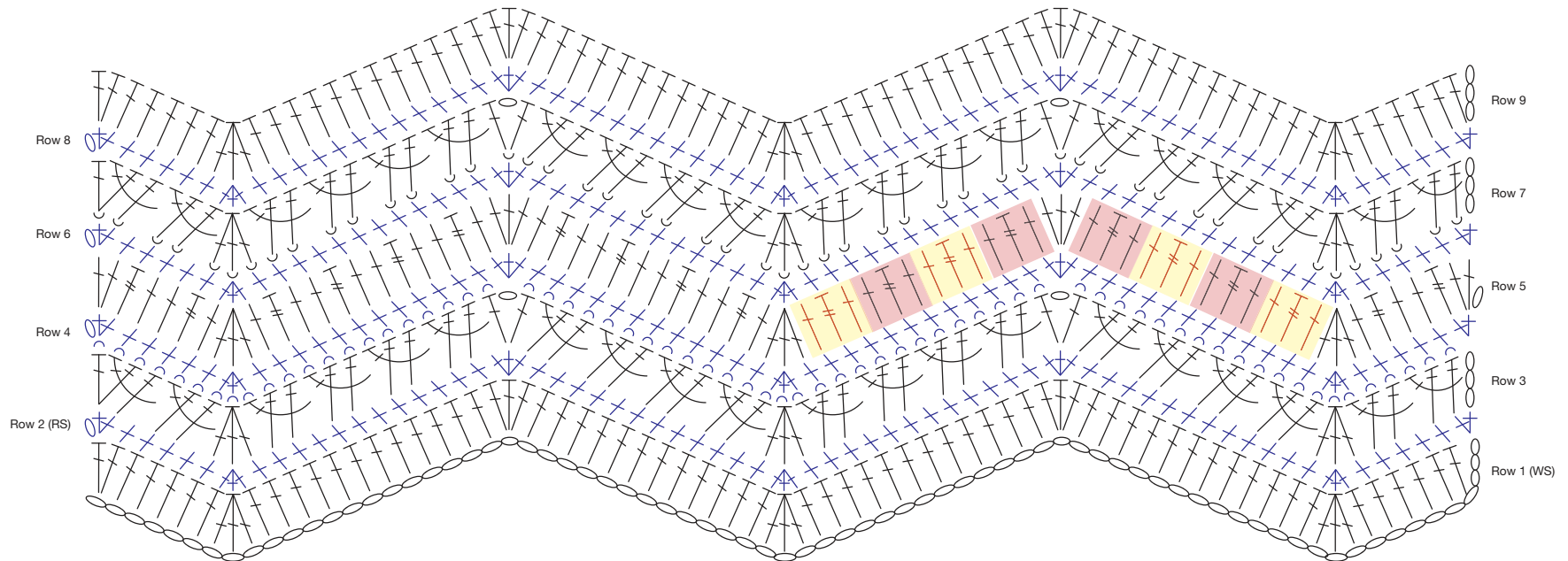
8th row: Ch 1, 2 sc in same st, 1 sc in next 5 sts, *sc3tog over next 3 sts, 1 sc in next 12 sts, 3 sc in next st, 1 sc in next 12 sts; rep from * until 9 sts remain, sc3tog over next 3 sts, 1 sc in next 5 sts, 2 sc in last st. Break Colour. Turn. 211 sts.

9th row: With new colour, attach with sl st to first st. Ch 3,

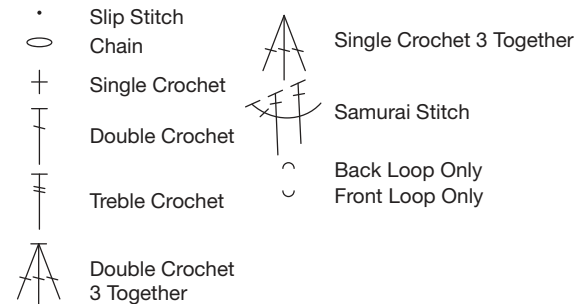
1 dc in same st, 1 dc in next 5 sts, *dc3tog over next 3 sts, 1 dc in next 12 sts, 3 dc in next st, 1 dc in next 12 sts; rep from * until 9 sts remain, dc3tog over next 3 sts, 1 dc in next 5 sts, 2 dc in last st. Turn. 211 sts.

Rep rows 2 thru 9, until blanket measures 48" or until desired length. Finish off.





Stitch Key



Multiples of 28 chs + 18

Repeat is 2nd to 9th rows. Colour is changed at the end of the 8th row. Colours shown are 9th row going through 2nd to 8th rows each time.